



## 2021 Electric Vehicle Availability Guide

*A summary of currently available battery-electric vehicles for medium- and heavy-duty electric fleets.*



## SECTION 1

### Heavy-Duty Electric Vehicles (Class 7-8)

1. BYD 8TT (T9/Q3M)
2. Einride AET 1,2,3,4
3. Freightliner eCascadia
4. Hino Trucks XL8, XL7
5. Kenworth K370E
6. Kenworth T680E
7. Lion Electric Co. eLion8
8. Lion Electric Co. Lion8 T
9. Lonestar SV S12, S22, T12, T22
10. Nikola Motor Co. Two, Tre
11. Peterbilt 579EV
12. SEA Electric HD Chassis Cab
13. SEA Electric HD Straight Trucks
14. Tesla Semi
15. Volvo VNR Electric Tractor
16. Volvo VNR Electric Straight Truck
17. Xos ET-One

## SECTION 2

### Electric Yard Tractors

1. BYD 8Y (Q1M)
2. Kalmar Ottawa T2E 4x2 Terminal Tractor
3. MAFI T230e
4. Terberg Tractors Americas YT202-EV
5. Terberg Tractors Americas YT203-EV
6. TICO Pro Spotter

## SECTION 3

### Medium-Duty Electric Vehicles (Class 4-7)

1. BYD 6F and 5F
2. BYD 6D Step Van
3. Cenntro City Porter
4. Chanje V8100
5. CityFreighter CF1
6. Endera Motors L
7. Freightliner eM2 108 & 106
8. Freightliner Custom Chassis Corp. MT50e
9. GreenPower EV Star CarGO Van, Cargo+, CC
10. Hino Trucks M5
11. Kenworth K270E
12. Lightning eMotors 6500XD Cab Forward Truck
13. Lightning eMotors F-59 Step Van
14. Lightning eMotors E-450 Box Truck
15. Lightning eMotors E-450 Work Truck
16. Lion Electric Co. Lion6
17. Motiv Power Systems F-59 Step Van
18. Motiv Power Systems E-450 Step Van and Truck
19. Navistar eMV
20. Nordresa T6, T5, and T4
21. Nordresa W4
22. Optimal EV E1
23. Peterbilt 220 EV
24. Phoenix ZEUS 500 Trucks
25. ROUSH CleanTech F-650/750
26. SEA Electric MD Chassis Cabs
27. SEA Electric MD Straight Trucks
28. SEA Electric MD Cutaways
29. Xos Delivery Van

## SECTION 4

### Medium-Duty Electric Vehicles (Class 2-3)

1. Arrival Van
2. Bollinger B2 Chassis Cab
3. Bollinger Deliver-E
4. BrightDrop EV600
5. Envirotech Urban Truck
6. Envirotech Logistics Van & Cutaway
7. Ford E-Transit
8. Ford F-150
9. Lightning eMotors Transit Cargo Van
10. Maxwell Vehicles ePro Electric Vans
11. Mercedes-Benz eSprinter
12. SEA Electric Ford Transit EV
13. Workhorse C-Series Vehicles



## SECTION 5

### Electric Shuttle Buses

1. BYD C6M – 23'
2. Ford Transit
3. GreenPower EV Star Min-e Bus – 25'
4. Lightning eMotors E-450 Shuttle Bus
5. Lightning eMotors Transit 350HD Passenger
6. Lion Electric eLionM – 26'
7. Micro Bird D-Series E-450
8. Motiv Power Systems F-59 Shuttle Bus
9. Phoenix Zeus 400 – 22'
10. SEA Electric Chassis Cab
11. SEA Electric Cutaways
12. SEA Electric Van

## SECTION 6

### Electric Transit Buses

1. BYD K7 – 30'
2. BYD C8M – 35'
3. BYD K9S – 35'
4. BYD C9M – 40'
5. BYD K9 – 40'
6. BYD C10M – 45'
7. BYD K11 – 60'
8. Gillig Low Floor Plus – 30-40'
9. GreenPower EV250 – 30-32'
10. GreenPower EV300 – 35'
11. GreenPower EV350 – 40'
12. GreenPower EV400 – 45'
13. Lightning eMotors City Transit Bus Repower
14. New Flyer XE35 – 35'
15. New Flyer XE40 – 40'
16. New Flyer XE60 – 60'
17. NovaBus LFSe+ – 40'
18. Proterra Catalyst XR – 35' and 40'
19. Proterra Catalyst E2 – 35'
20. Proterra Catalyst E2 and E2 max – 40'

## SECTION 7

### Electric Double Decker Transit Buses

1. BYD C8MS – 35' Double Decker
2. GreenPower EV550 – 45' Double Decker



SECTION 1

# Heavy-Duty Electric Vehicles Class 7-8







## BYD 8TT (T9/Q3M)

**Weight Class (GVWR):** Class 8 (33,001+ lbs)

**Payload:** 20,000 lbs

**Chassis/Body Type:** Tractor

**Energy Storage Capacity:** 435 kWh

**Range:** 124 miles

**Max Charge Rate:** 300kW

**Availability:** In production

**Base Price:** Not available

**Website:** <http://en.byd.com/usa/>

**Sales Contact:**

John Gerra

Director of Truck Sales

[john.gerra@byd.com](mailto:john.gerra@byd.com)



## Einride AET 1, 2, 3, 4

**Weight Class (GVWR):** Class 8 (33,001+ lbs)

**Payload:** 32,000 lbs

**Chassis/Body Type:** Tractor

**Energy Storage Capacity:** 200-300 km

**Range:** 80-111 miles, 124-186 miles

**Max Charge Rate:** Not available

**Availability:** In production

**Base Price:** \$10,000 (monthly service fee up to \$22,500)

**Website:** <https://www.einride.tech/>

**Sales Contact:**

Chris Abarca  
District Manager, Western Region  
[chris.abarca@daimler.com](mailto:chris.abarca@daimler.com)

## Freightliner eCascadia 116/126

**Weight Class (GVWR):** Class 8 (33,001+ lbs)

**Payload:** Not available

**Chassis/Body Type:** Tractor

**Energy Storage Capacity:** 210, 315, 475 kWh

**Range:** 250 miles

**Max Charge Rate:** 225 KW

**Availability:** Pre-production

**Base Price:** Not available

**Website:** <https://freightliner.com/e-mobility/>



## Hino Trucks XL8, XL7

**Weight Class (GVWR):** Class 8 (33,001+ lbs),  
Class 7 (26,001-33,000 lb)

**Payload:** Not available

**Chassis/Body Type:** Tractor, Straight/Box Truck

**Energy Storage Capacity:** Not available

**Range:** 250 miles

**Max Charge Rate:** Not available

**Availability:** Pre-production

**Base Price:** Not available

**Website:** <https://www.truckinginfo.com...>



A **PACCAR** COMPANY



## Kenworth K370E

**Weight Class (GVWR):** Class 7 (26,001-33,000 lbs)

**Payload:** Not available

**Chassis/Body Type:** Cab-over

**Energy Storage Capacity:** 141 kWh, 282 kWh

**Range:** 100-200 miles

**Max Charge Rate:** Not available

**Availability:** In production

**Base Price:** Not available

**Website:** <https://www.kenworth.com/trucks/k270-k370/>





A **PACCAR** COMPANY



## Kenworth T680E

**Weight Class (GVWR):** Class 8 (33,001+ lbs)

**Payload:** Not available

**Chassis/Body Type:** Tractor and straight truck

**Energy Storage Capacity:** Not available

**Range:** 100-150 miles

**Max Charge Rate:** 120 kWh

**Availability:** Pre-production

**Base Price:** Not available

**Website:** <https://www.kenworth.com/news/news-releases/2020/february/kenworth-t680e/>



## Lion Electric Co. Lion8 Urban Truck

**Weight Class (GVWR):** Class 8 (33,001+ lbs)

**Payload:** 30,000 lbs

**Chassis/Body Type:** Straight/Box Truck

**Energy Storage Capacity:** 336 kWh

**Range:** 170 miles

**Max Charge Rate:** 100 kW

**Availability:** In production

**Base Price:** \$300,000

**Website:** <https://thelionelectric.com/en>

**Sales Contact:**

Dave Anderson

Sales Manager

[dave.anderson@thelionelectric.com](mailto:dave.anderson@thelionelectric.com)



## Lion Electric Co. Lion8 T

**Weight Class (GVWR):** Class 8 (33,001+ lbs)

**Payload:** 30,000 lbs

**Chassis/Body Type:** Tractor

**Energy Storage Capacity:** 588 kWh

**Range:** 210 miles

**Max Charge Rate:** 100 kW

**Availability:** In production

**Base Price:** \$300,000

**Website:** <https://thelionelectric.com/en>

**Sales Contact:**

Dave Anderson

Sales Manager

[dave.anderson@thelionelectric.com](mailto:dave.anderson@thelionelectric.com)

LONESTAR SV | ELECTRIC



## Lonestar SV S12, S22, T12, T22

**Weight Class (GVWR):** Class 8 (33,001+ lbs)

**Payload:** Not available

**Chassis/Body Type:** Yard Tractor

**Energy Storage Capacity:** 112 kWh, 120 kWh

**Range:** 12-22 hours

**Max Charge Rate:** 163 kW

**Availability:** In production

**Base Price:** \$215,000-\$265,000

**Website:** <https://www.lonestarsv.com/4x2models>



## Nikola Motor Co. Two, Tre

**Weight Class (GVWR):** Class 8 (33,001+ lbs)

**Payload:** Not available

**Chassis/Body Type:** Tractor

**Energy Storage Capacity:** Not available

**Range:** 300 miles

**Max Charge Rate:** 350 kW

**Availability:** Pre-production

**Base Price:** Not available

**Website:** <https://nikolamotor.com/tre>





A **PACCAR** COMPANY

**Sales Contact:**

Warner Hall

MD District Sales Manager

Major Markets

[Warner.Hall@PACCAR.com](mailto:Warner.Hall@PACCAR.com)

## Peterbilt 579EV

**Weight Class (GVWR):** Class 8 (33,001+ lbs)

**Payload:** Customized

**Chassis/Body Type:** Tractor

**Energy Storage Capacity:** 396 kWh

**Range:** 150 miles

**Time to recharge:** 1-5 hours

**Availability:** Pre-production

**Base Price:** Not available

**Website:** <https://www.peterbilt.com/electric-vehicles>



**Sales Contact:**

Steve Brooks  
VP of Sales

[steveb@sea-electric.com](mailto:steveb@sea-electric.com)

## SEA Electric Chassis Cab

**Weight Class (GVWR):** Class 7 (26,001–33,000 lbs); Class 8 (33,001+ lbs)

**Payload:** 85% - 90% of conventional load

**Available Models:** Ford F-750; Freightliner M2 106; Isuzu NRR & FTR

**Energy Storage Capacity:** 138 – 220 kWh

**Range:** up to 200 miles

**Max Charge Rate:** 19.2 kW

**Availability:** In production

**Base Price:** Not available

**Website:** <https://www.sea-electric.com/>



**Sales Contact:**  
Steve Brooks  
VP of Sales  
[steveb@sea-electric.com](mailto:steveb@sea-electric.com)

## SEA Electric Straight Trucks

**Weight Class (GVWR):** Class 8 (33,001+ lbs)

**Payload:** 85% - 90% of conventional load

**Available Models:** SEA 338, SEA L7 EV

**Energy Storage Capacity:** 138 kWh

**Range:** 200 miles

**Max Charge Rate:** 19.2 kW

**Availability:** In production (conversion and repowers)

**Base Price:** Not available

**Website:** <https://www.sea-electric.com/>

## TESLA

**Sales Contact:**

Graham Carroll

Staff Program Manager & BD,  
SemiTruck[gcarroll@tesla.com](mailto:gcarroll@tesla.com)

## Tesla Semi

**Weight Class (GVWR):** Class 8 (33,001+ lbs)**Payload:** Not available**Chassis/Body Type:** Tractor**Energy Storage Capacity:** Not available**Range:** 300-500 miles**Max Charge Rate:** 1.6 MW**Availability:** Pre-production**Base Price:** \$150,000-\$180,000 (expected)**Website:** <https://www.tesla.com/>



## Volvo VNR Electric Tractor

**Weight Class (GVWR):** Class 8 (33,001+ lbs)

**Payload:** 27,000–35,000

**Chassis/Body Type:** Tractor

**Energy Storage Capacity:** 264 kW

**Range:** 120 miles

**Max Charge Rate:** 150 kW

**Availability:** In production

**Base Price:** Not publicly available

**Website:** <https://www.volvotrucks.us/trucks/vnr-electric/>

**Sales Contact:**

Jared Ruiz

Emobility Regional Sales Manager

Western Region

(336)-690-7949

[jared.ruiz@volvo.com](mailto:jared.ruiz@volvo.com)



**Sales Contact:**

Jared Ruiz

Emobility Regional Sales Manager

Western Region

(336)-690-7949

[jared.ruiz@volvo.com](mailto:jared.ruiz@volvo.com)

## Volvo VNR Electric Straight Truck

**Weight Class (GVWR):** Class 7 (26,001–33,000 lbs)**Payload:** 8,000**Chassis/Body Type:** Straight / Box Truck**Energy Storage Capacity:** 264 kW**Range:** 150 miles**Max Charge Rate:** 150 kW**Availability:** In production**Base Price:** Not publicly available**Website:** <https://www.volvotrucks.us/trucks/vnr-electric/>



**Sales Contact:**  
Austin Benzinger  
Director  
Business Development  
[abenzinger@xostrucks.com](mailto:abenzinger@xostrucks.com)

## Xos ET-One

**Weight Class (GVWR):** Class 8 (33,001+ lbs)

**Payload:** Not available

**Chassis/Body Type:** Tractor

**Energy Storage Capacity:** Not available

**Range:** 300 miles

**Max Charge Rate:** Not available

**Availability:** Pre-production

**Base Price:** \$150,000

**Website:** <https://xostrucks.com/>

## SECTION 2

# Electric Yard Tractors





## BYD 8Y (Q1M)

**Weight Class (GVWR):** Class 8 (33,001+ lbs)

**Payload:** 82,200 lbs

**Chassis/Body Type:** Yard Tractor

**Energy Storage Capacity** 217 kWh

**Range:** 10+ hrs

**Max Charge Rate:** 200 kW

**Availability:** In production

**Base Price:** \$300,000

**Website:** <http://en.byd.com/usa/>

**Sales Contact:**

John Gerra

Director of Truck Sales

[john.gerra@byd.com](mailto:john.gerra@byd.com)

**Sales Contact:**

Donald Lawrence

Sales Manager

Terminal Tractors

[dlawrence@papemh.com](mailto:dlawrence@papemh.com)

## Kalmar Ottawa T2E 4x2 Terminal Tractor

**Weight Class (GVWR):** Class 8 (33,001+ lbs)**Payload:** 78,200**Chassis/Body Type:** Yard Tractor**Energy Storage Capacity:** 132-200 kWh**Range:** 8-20 hrs**Max Charge Rate:** 70 kW**Availability:** In production**Base Price:** \$272,000-\$349,000**Website:** <https://kalmarottawa.com/>



## MAFI T230e

**MAFI**  
TRANSPORT-SYSTEME GMBH



**Weight Class (GVWR):** Class 8 (33,001+ lbs)

**Payload:** Not available

**Chassis/Body Type:** Yard Tractor

**Energy Storage Capacity:** 177 kW

**Range:** Not available

**Max Charge Rate:** Not available

**Availability:** In production

**Base Price:** Not available

**Website:** <https://www.fleetowner.com/running-green/press-release/21152231/mafi-launches-electric-terminal-tractor-t-230e> [BACK TO TOP](#)



## Terberg Tractors Americas YT202-EV

**Weight Class (GVWR):** Class 8 (33,001+ lbs)

**Payload:** 130,000

**Chassis/Body Type:** Yard Tractor

**Energy Storage Capacity:** 113-170 kW

**Range:** 5-13 hours

**Max Charge Rate:** 80 kW

**Availability:** Pre-production

**Base Price:** \$350,000-\$400,000

**Website:** <https://www.terbergtractorsamericas.com/en/>

**Sales Contact:**

Ron Van Arkel

[R.vanArkel@terbergamericas.com](mailto:R.vanArkel@terbergamericas.com)



## Terberg Tractors Americas YT203-EV



**Weight Class (GVWR):** Class 8 (33,001+ lbs)

**Payload:** 130,000

**Chassis/Body Type:** Yard Tractor

**Energy Storage Capacity:** 96, 148, 222 kW

**Range:** 5.5, 8, 12 hours

**Max Charge Rate:** 96 kW

**Availability:** In production

**Base Price:** \$270,000-\$355,000

**Website:** <https://www.terbergtractorsamericas.com/en/>

**Sales Contact:**

Ron Van Arkel

[R.vanArkel@terbergamericas.com](mailto:R.vanArkel@terbergamericas.com)



## TICO Pro Spotter

**Weight Class (GVWR):** Class 8 (33,001+ lbs)

**Payload:** 42,000

**Chassis/Body Type:** Yard Tractor

**Energy Storage Capacity:** 132, 172, 196 kW

**Range:** Not available

**Max Charge Rate:** Not available

**Availability:** Pre-production

**Base Price:** \$275,000–\$310,000

**Website:** <http://ticottractors.com/pro-spotter/>

SECTION 3

# Medium-Duty Electric Vehicles Class 4-7





## BYD 6F and 5F

**Weight Class (GVWR):** Class 6 (19,501-26,000 lbs),  
Class 5 (16,001-19,500 lbs)

**Payload:** 12,502-8,093 lbs

**Chassis/Body Type:** Chassis Cab

**Energy Storage Capacity:** 145-221 kWh

**Range:** 124-155 miles

**Max Charge Rate:** 150 kW

**Availability:** In production

**Base Price:** \$165,000+

**Website:** <http://en.byd.com/usa/>

**Sales Contact:**

John Gerra

Director of Truck Sales

[john.gerra@byd.com](mailto:john.gerra@byd.com)



## BYD 6D Step Van

**Weight Class (GVWR):** Class 6 (19,501-26,000 lbs)

**Payload:** 10,233 lbs

**Chassis/Body Type:** Van

**Energy Storage Capacity:** 221 kWh

**Range:** 125 miles

**Max Charge Rate:** 120 kW

**Availability:** In production

**Base Price:** Not Available

**Website:** <http://en.byd.com/usa/>

**Sales Contact:**

John Gerra

Director of Truck Sales

[john.gerra@byd.com](mailto:john.gerra@byd.com)



**CENNTRO**

## Cenntro City Porter



**Weight Class (GVWR):** Class 4 (14,001-16,000 lb)

**Payload:** 5,700 lbs

**Chassis/Body Type:** Van

**Energy Storage Capacity:** Not available

**Range:** 220 miles

**Max Charge Rate:** Not available

**Availability:** Pre-production

**Base Price:** Not available

**Website:** <https://www.prnewswire.com/...>



**Sales Contact:**

Tim Weaver  
 Senior Vice President  
 Business Development  
[tim.weaver@chanje.us](mailto:tim.weaver@chanje.us)  
[sales@chanje.com](mailto:sales@chanje.com)

## Chanje V8100

**Weight Class (GVWR):** Class 5 (16,001-19,500 lbs)

**Payload:** 6,000 lbs

**Chassis/Body Type:** Van

**Energy Storage Capacity:** 100 kWh

**Range:** 150 miles

**Max Charge Rate:** 13.2 kW

**Availability:** In production

**Base Price:** \$85,000

**Website:** <https://chanje.com/>



## CityFreighter CF1



**Weight Class (GVWR):** Class 3 (10,001-14,000 lb)

**Payload:** 4,800 lbs

**Chassis/Body Type:** Straight/Box Truck

**Energy Storage Capacity:** Not available

**Range:** 100 miles

**Max Charge Rate:** Not available

**Availability:** Pre-production

**Base Price:** Not available

**Website:** <https://www.cityfreighter.com/>



## Endera Motors L



**Weight Class (GVWR):** Class 4 (14,001-16,000 lb)

**Payload:** 6,900-6,100 lbs

**Chassis/Body Type:** Straight/Box Truck

**Energy Storage Capacity:** 86, 129kWh

**Range:** 80, 120 miles

**Max Charge Rate:** 50 kW

**Availability:** In production

**Base Price:** Not available

**Website:** <https://www.enderamotors.com/our-l-series>



## Freightliner eM2 108 & 106



**Weight Class (GVWR):** Class 7 (26,001-33,000 lbs) and Class 6 (19,501-26,000 lbs)

**Payload:** Not available

**Chassis/Body Type:** Straight truck

**Energy Storage Capacity:** 210, 220, 315, 475 kWh

**Range:** 230 miles

**Max Charge Rate:** 150 kWh

**Availability:** Pre-production

**Base Price:** Not available

**Website:** <https://freightliner.com/e-mobility/>

**Sales Contact:**

Chris Abarca  
District Manager,  
Western Region

[chris.abarca@daimler.com](mailto:chris.abarca@daimler.com)



## Freightliner Custom Chassis Corporation MT-50e

**Weight Class (GVWR):** Class 6 (19,501-26,000 lbs) and Class 5 (16,001-19,500 lbs)

**Payload:** 23,000 lbs

**Chassis/Body Type:** Van

**Energy Storage Capacity:** 226 kWh

**Range:** 120 miles

**Max Charge Rate:** Not available

**Availability:** Pre-production

**Base Price:** Not available

**Website:** <https://www.fcccommercial.com/wp-content/uploads/2020/11/FCCC783-MT50e-Flyer-Layout.pdf>

**Sales Contact:**

Chris Abarca  
District Manager,  
Western Region

[chris.abarca@daimler.com](mailto:chris.abarca@daimler.com)





## GreenPower EV Star Cargo, Cargo+, CC



**Weight Class (GVWR):** Class 5 (16,001-19,500 lbs),  
Class 4 (14,001-16,000 lb)

**Payload:** 6,000-5,000 lbs

**Chassis/Body Type:** Van, Straight/Box Truck, Cutaway

**Energy Storage Capacity:** 118 kWh

**Range:** 150 miles

**Max Charge Rate:** 50 kW

**Availability:** Pre-production

**Base Price:** \$149,900+

**Website:** <https://www.greenpowerbus.com>

**Sales Contact:**

Ryan Shetterly

Vice President

Sales & Marketing

[ryne@greenpowerbus.com](mailto:ryne@greenpowerbus.com)





## Hino Trucks M5

**Weight Class (GVWR):** Class 5 (16,001-19,500 lbs),

**Payload:** Not available

**Chassis/Body Type:** Cab-over

**Energy Storage Capacity:** 138 kWh

**Range:** 200 miles

**Max Charge Rate:** 19.2 kW

**Availability:** Pre-production

**Base Price:** Not available

**Website:** <https://www.truckinginfo.com...>



A **PACCAR** COMPANY



**Sales Contact:**

Lance Barton  
Medium Duty Sales Manager  
Western Region  
[Lance/Barton@paccar.com](mailto:Lance/Barton@paccar.com)

## Kenworth K270E

**Weight Class (GVWR):** Class 6 (19,501-26,000 lbs)

**Payload:** Not available

**Chassis/Body Type:** Cab-over

**Energy Storage Capacity:** 141 kWh, 282 kWh

**Range:** 100-200 miles

**Max Charge Rate:** Not available

**Availability:** In production

**Base Price:** Not available

**Website:** <https://www.kenworth.com/trucks/k270-k370/>



## Lightning eMotors 6500XD Cab Forward Truck

**Weight Class (GVWR):** Class 6 (19,501-26,000 lbs)

**Payload:** 14,000-12,200 lbs

**Chassis/Body Type:** Cab-over

**Energy Storage Capacity:** 128-192 kWh

**Range:** 88-130 miles

**Max Charge Rate:** 13.2-80 kW

**Availability:** In production

**Base Price:** Contact for details

**Website:** <https://lightningemotors.com/lightningelectric-chevrolet-6500xd/>

**Sales Contact:**

Julie Johnson

Enterprise Business Development

[julie.johnson@lightningsystems.com](mailto:julie.johnson@lightningsystems.com)



## Lightning eMotors F-59 Step Van

**Weight Class (GVWR):** Class 6 (19,501-22,000 lbs)

**Payload:** Customized

**Chassis/Body Type:** Step Van

**Energy Storage Capacity:** 128- 192 kWh

**Range:** 110-170 miles

**Max Charge Rate:** 13.2-80kw

**Availability:** In production

**Base Price:** Contact for Details

**Website:** <https://lightningsystems.com/lightningelectric-f-59-delivery-van/>

**Sales Contact:**

Julie Johnson

Enterprise Business Development

[julie.johnson@lightningsystems.com](mailto:julie.johnson@lightningsystems.com)



## Lightning eMotors E-450 Box Truck

**Weight Class (GVWR):** Class 4 (14,000-16,000 lbs)

**Payload:** 6,100-6,900 lbs

**Chassis/Body Type:** Cutaway

**Energy Storage Capacity:** 86-129 kWh

**Range:** 80-120 miles

**Max Charge Rate:** 13.2-80kw

**Availability:** In production

**Base Price:** Contact for details

**Website:** <https://lightningemotors.com/lightningelectric-e450-cutaway/>

**Sales Contact:**

Julie Johnson

Enterprise Business Development

[julie.johnson@lightningsystems.com](mailto:julie.johnson@lightningsystems.com)



## Lightning eMotors E-450 Work Truck

**Weight Class (GVWR):** Class 4 (14,000-16,000 lbs)

**Payload:** 6,100-6,900 lbs

**Chassis/Body Type:** Cutaway

**Energy Storage Capacity:** 86-129 kWh

**Range:** 80-120 miles

**Max Charge Rate:** 13.2-80 kw

**Availability:** In production

**Base Price:** Contact for details

**Website:** <https://lightningsystems.com/lightningelectric-e450-cutaway/>



**Sales Contact:**

Julie Johnson

Enterprise Business Development

[julie.johnson@lightningsystems.com](mailto:julie.johnson@lightningsystems.com)



## Lion Electric Co. Lion6

**Weight Class (GVWR):** Class 6 (19,501-26,000 lb)

**Payload:** Not available

**Chassis/Body Type:** Straight/Box Truck

**Energy Storage Capacity:** 252 kWh

**Range:** 180 miles

**Max Charge Rate:** 100 kW

**Availability:** In production

**Base Price:** Not available

**Website:** <https://thelionelectric.com/en>

**Sales Contact:**

Dave Anderson

Sales Manager

[dave.anderson@thelionelectric.com](mailto:dave.anderson@thelionelectric.com)



**Sales Contact:**

John Felts

Sales Representative

NorCal &amp; NW USA

[john.felts@motivps.com](mailto:john.felts@motivps.com)

## Motiv Power Systems EPIC F-59

**Weight Class (GVWR):** Class 6 (19,501-26,000 lbs)**Payload:** 10,000 lbs**Chassis/Body Type:** Straight/Box Truck**Energy Storage Capacity:** 127 kWh**Range:** 120 miles**Max Charge Rate:** 60 kW**Availability:** In production**Base Price:** Customizable; available upon request**Website:** [https://www.motivps.com/motivps/  
portfolio-items/epicf59-allelectric-stepvan/](https://www.motivps.com/motivps/portfolio-items/epicf59-allelectric-stepvan/)

**Sales Contact:**

John Felts  
Sales Representative  
NorCal & NW USA  
[john.felts@motivps.com](mailto:john.felts@motivps.com)

## Motiv Power Systems EPIC E-450

**Weight Class (GVWR):** Class 4 (14,000-16,000 lbs)

**Payload:** up to 6,000 lbs

**Chassis/Body Type:** Cutaway

**Energy Storage Capacity:** 127 kWh

**Range:** 120 miles

**Max Charge Rate:** 60 kW

**Availability:** In production

**Base Price:** Customizable; available upon request

**Website:** <https://www.motivps.com/motivps/>

**Sales Contact:**

Jason Gies

Director of Business Development

[jason.gies@navistar.com](mailto:jason.gies@navistar.com)

## Navistar eMV

**Weight Class (GVWR):** Class 6 (19,501-26,000 lbs)**Payload:** Not available**Chassis/Body Type:** Chassis Cab**Energy Storage Capacity:** 107-321 kWh**Range:** up to 250 miles**Max Charge Rate:** Not available**Availability:** Pre-production**Base Price:** Not available**Website:** <https://www.internationaltrucks.com/trucks/mv-series>



## Nordresa T6, T5, and T4

**Weight Class (GVWR):** Class 6 (19,501-26,000 lbs), Class 5 (16,001-19,500 lbs), Class 4 (14,000-16,000 lbs)

**Payload:** 12,750-8,250 lbs

**Chassis/Body Type:** Cab-over

**Energy Storage Capacity:** 80-160 kWh

**Range:** 62-150 miles

**Max Charge Rate:** 13.5 kW

**Availability:** In production

**Base Price:** \$120,000-\$150,000

**Website:** <https://nordresa.com/en/t-series>



## Nordresa W4



**Weight Class (GVWR):** Class 4 (14,000-16,000 lbs)

**Payload:** 5,550-4,450 lbs

**Chassis/Body Type:** Van

**Energy Storage Capacity:** 80-160 kWh

**Range:** 75-150 miles

**Max Charge Rate:** 13.5 kW

**Availability:** In production

**Base Price:** Not available

**Website:** <https://nordresa.com/en/w-series>



## Optimal EV E1



**Weight Class (GVWR):** Class 4 (14,001-16,000 lb)

**Payload:** Not available

**Chassis/Body Type:** Cutaway

**Energy Storage Capacity:** 134 kWh

**Range:** 125 miles

**Max Charge Rate:** Not available

**Availability:** In production

**Base Price:** Not available

**Website:** <https://optimal-ev.com/about>



A **PACCAR** COMPANY



**Sales Contact:**

Warner Hall

MD District Sales Manager

Major Markets

[Warner.Hall@PACCAR.com](mailto:Warner.Hall@PACCAR.com)

## Peterbilt 220 EV

**Weight Class (GVWR):** Class 7 (26,001-33,000 lb),  
Class 6 (19,501-26,000 lbs)

**Payload:** 33,000-26,000 lbs

**Chassis/Body Type:** Straight/Box Truck

**Energy Storage Capacity:** 141 kWh, 148 kWh, 282 kWh

**Range:** 100-200 miles

**Max Charge Rate:** 150 kWh

**Availability:** Pre-production

**Base Price:** Not available

**Website:** <https://www.peterbilt.com/electric-vehicles>





## Phoenix ZEUS 500 Trucks

**Weight Class (GVWR):** Class 4 (14,000-16,000 lbs)

**Payload:** 6,500 lbs

**Chassis/Body Type:** Cutaway

**Energy Storage Capacity:** 70, 105, 140 kWh

**Range:** 80, 115, 150 mi

**Max Charge Rate:** 50 kW

**Availability:** In production

**Base Price:** \$202,500-\$226,000

**Website:** <http://www.phoenixmotorcars.com/products/#trucks>

**Sales Contact:**

Thomas Allen

Sales Manager

[thomasa@phoenixmotorcars.com](mailto:thomasa@phoenixmotorcars.com)



## ROUSH CleanTech F-650

**Weight Class (GVWR):** Class 6 (19,501-26,000 lb)

**Payload:** 14,500 lbs

**Chassis/Body Type:** Chassis Cab

**Energy Storage Capacity:** 138 kWh

**Range:** 100 miles

**Max Charge Rate:** 19.2 kW

**Availability:** Pre-production

**Base Price:** Not available

**Website:** <https://www.roushcleantech.com/ford-f-650-chassis-cab/>

**Sales Contact:**

Adam Wilkum

Business Development Manager

313.400.8676

[adam.wilkum@roush.com](mailto:adam.wilkum@roush.com)

**Sales Contact:**

Steve Brooks

VP of Sales

[steveb@sea-electric.com](mailto:steveb@sea-electric.com)

## SEA Electric MD Chassis Cabs

**Weight Class (GVWR):** Class 4 (14,000-16,000 lbs); Class 5 (16,001-19,500 lbs); Class 6 (19,501-26,000 lbs)

**Payload:** 85% - 90% of conventional load

**Available Models:** SEA 4500/5500/6500; SEA M2 106; SEA 155/195; SEA NPR/NQR; SEA M4/M5

**Energy Storage Capacity:** 100 –138 kWh

**Range:** 170 – 200 miles

**Max Charge Rate:** 19.2 kW

**Availability:** In production (conversion and repower)

**Base Price:** Not available

**Website:** <https://www.sea-electric.com/>



## SEA Electric MD Straight Trucks

**Weight Class (GVWR):** Class 4 (14,000-16,000 lbs); Class 5 (16,001-19,500 lbs); Class 6 (19,501-26,000 lbs)

**Payload:** 85% - 90% of conventional load

**Available Models:** SEA F-53/59; SEA MT45/55; SEA L6; SEA 238/258/268

**Energy Storage Capacity:** 138 kWh

**Range:** 200 miles

**Max Charge Rate:** 19.2 kW

**Availability:** In production (conversion and repower)

**Base Price:** Not available

**Website:** <https://www.sea-electric.com/>

**Sales Contact:**

Steve Brooks

VP of Sales

[steveb@sea-electric.com](mailto:steveb@sea-electric.com)



**Sales Contact:**

Steve Brooks

VP of Sales

[steveb@sea-electric.com](mailto:steveb@sea-electric.com)

## SEA Electric MD Cutaways

**Weight Class (GVWR):** Class 4 (14,000-16,000 lbs); Class 5 (16,001-19,500 lbs); Class 6 (19,501-26,000 lbs)

**Payload:** 85% - 90% of conventional load

**Available Models:** SEA 450/550/650; SEA 4500

**Energy Storage Capacity:** 100 – 138 kWh

**Range:** 170 – 200 miles

**Max Charge Rate:** 19.2 kW

**Availability:** In production (conversion and repower)

**Base Price:** Not available

**Website:** <https://www.sea-electric.com/>

**Sales Contact:**

Austin Benzinger

Director

Business Development

[abenzinger@xostrucks.com](mailto:abenzinger@xostrucks.com)

## Xos Delivery Van

**Weight Class (GVWR):** Class 6 (19,501-26,000 lbs)**Payload:** Not available**Chassis/Body Type:** Straight/Box Truck**Energy Storage Capacity:** Not available**Range:** 200 miles**Max Charge Rate:** Not available**Availability:** In production**Base Price:** Not available**Website:** <https://xostrucks.com/>

SECTION 4

# Medium-Duty Electric Vehicles Class 2-3







## Arrival Van

**Weight Class (GVWR):** Class 2 (6,001-10,000 lb)

**Payload:** 4,235 lbs

**Chassis/Body Type:** Van

**Energy Storage Capacity:** 44-133 kWh

**Range:** 93-214 miles

**Max Charge Rate:** 6.6 kW

**Availability:** Pre-production

**Base Price:** Not available

**Website:** <https://arrival-site-cms.s3.eu-west-2.amazonaws.com>



## **BOLLINGER MOTORS**

### Bollinger B2 Chassis Cab



**Weight Class (GVWR):** Class 3 (10,001-14,000 lb)

**Payload:** 5,000 lbs

**Chassis/Body Type:** Chassis Cab

**Energy Storage Capacity:** 142 kWh

**Range:** 200 miles

**Max Charge Rate:** 100 kW

**Availability:** Pre-production

**Base Price:** \$125,000

**Website:** <https://bollingermotors.com/bollinger-b2/>

## **BOLLINGER MOTORS**



## Bollinger Deliver-E

**Weight Class (GVWR):** Class 3 (10,001-14,000 lb)

**Payload:** Not available

**Chassis/Body Type:** Van

**Energy Storage Capacity:** 70, 105, 140, 175, 210 kWh

**Range:** Up to 200 miles

**Max Charge Rate:** 100 kW

**Availability:** Pre-production

**Base Price:** \$125,000

**Website:** <https://bollinger motors.com/bollinger-b2/>



## BrightDrop EV600



**Weight Class (GVWR):** Class 2 (6,001-10,000 lb)

**Payload:** 2,200 lbs

**Chassis/Body Type:** Van

**Energy Storage Capacity:** Not available

**Range:** 250 miles

**Max Charge Rate:** 120 kW

**Availability:** In production

**Base Price:** Not available

**Website:** <https://www.gobrightdrop.com/>



## Envirotech Urban Truck

**Weight Class (GVWR):** Class 3 (10,001-14,000 lbs)

**Payload:** 5,732 lbs

**Chassis/Body Type:** Cab-over

**Energy Storage Capacity:** 92.5 kWh

**Range:** 174 miles

**Max Charge Rate:** 6.6 kW

**Availability:** In production

**Base Price:** \$119,900

**Website:** <https://envirotechvehicles.com/urban-truck/>



## Envirotech Logistics Van and Cutaway

**Weight Class (GVWR):** Class 3 (10,001-14,000 lbs)

**Payload:** 5511-4828 lbs

**Chassis/Body Type:** Van and Cutaway

**Energy Storage Capacity:** 106 kWh

**Range:** 174 miles

**Max Charge Rate:** 6.6 kW

**Availability:** In production

**Base Price:** \$114,900-\$119,900

**Website:** <https://envirotechvehicles.com/logistics-van/>



## Ford E-Transit

**Weight Class (GVWR):** Class 2 (6,001-10,000 lbs)

**Payload:** 4,290-3,800 lbs

**Chassis/Body Type:** Cutaway, Cab Chassis, Van

**Energy Storage Capacity:** 67 kWh

**Range:** 126 miles

**Max Charge Rate:** Not available

**Availability:** Pre-production

**Base Price:** Under \$45,000

**Website:** <https://www.ford.com/commercial-trucks/e-transit/2022/>





## Ford F-150 Lightning

**Weight Class (GVWR):** Class 2 (6,001-10,000 lbs)

**Payload:** 2,000 lbs

**Chassis/Body Type:** Full size pickup truck

**Energy Storage Capacity:** Not available

**Range:** 230-300 miles

**Max Charge Rate:** Not available

**Availability:** In production

**Base Price:** \$39,974

**Website:** <https://www.ford.com/trucks/f150/f150-lightning/2022/>





## Lightning eMotors Transit Cargo Van

**Weight Class (GVWR):** Class 3 (10,001-11,000 lbs)

**Payload:** 2,900-3,700 lbs

**Chassis/Body Type:** Van and Cutaway

**Energy Storage Capacity:** 80-120 KWh

**Range:** 140-170 miles

**Max Charge Rate:** 13.2-80kw

**Availability:** In production

**Base Price:** Contact for details

**Website:** <https://lightningsystems.com/lightningelectric-ford-transit-cargo/>



**Sales Contact:**

Julie Johnson

Enterprise Business Development

[julie.johnson@lightningsystems.com](mailto:julie.johnson@lightningsystems.com)



## Maxwell Vehicles ePro Electric Vans



**Weight Class (GVWR):** Class 2 (6,001-10,000 lbs)

**Payload:** 4,100 lbs (4,600 lbs tow)

**Chassis/Body Type:** Van

**Energy Storage Capacity:** 54, 62, 75 kWh

**Range:** 100 - 200 miles

**Max Charge Rate:** 150 kW

**Availability:** In production

**Base Price:** \$34,990 - \$45,000

**Website:** <https://www.maxwellvehicles.com/>



Mercedes-Benz



## Mercedes-Benz eSprinter

**Weight Class (GVWR):** Class 2 (6,001-10,000 lbs)

**Payload:** 2,293 lbs; 1,964 lbs

**Chassis/Body Type:** Van

**Energy Storage Capacity:** 44, 55 kWh

**Range:** 70 - 90 miles

**Max Charge Rate:** 80 kW

**Availability:** In production

**Base Price:** \$70,000

**Website:** <https://www.mbvans.com/sprinter/commercial-vans/passenger-van>

[BACK TO TOP](#)



**Sales Contact:**  
Steve Brooks  
VP of Sales  
[steveb@sea-electric.com](mailto:steveb@sea-electric.com)

## SEA Electric Ford Transit EV

**Weight Class (GVWR):** Class 3 (10,001-14,000 lbs)

**Payload:** 85% - 90% of conventional load

**Chassis/Body Type:** Cargo van and Cutaway

**Energy Storage Capacity:** 88 kWh

**Range:** up to 190 miles

**Max Charge Rate:** 19.2 kW

**Availability:** In production

**Base Price:** Not available

**Website:** <https://www.sea-electric.com/>

**WORKHORSE™**



**Sales Contact:**

Pax Lindell

Sales

[sales@workhorse.com](mailto:sales@workhorse.com)

## Workhorse C-Series Vehicles

**Weight Class (GVWR):** Class 3 (10,001-14,000 lbs)

**Payload:** 6,000 lbs

**Chassis/Body Type:** Straight/Box Truck

**Energy Storage Capacity:** 35, 70 kWh

**Range:** 50, 100 miles

**Max Charge Rate:** Not available

**Availability:** In production

**Base Price:** Not available

**Website:** <https://workhorse.com/>

## SECTION 5

# Electric Shuttle Buses







## BYD C6M – 23'

**Weight Class (GVWR):** Class 5 (16,001-19,500 lbs)

**Passenger Capacity:** 16 people

**Chassis/Body Type:** Shuttle Bus

**Energy Storage Capacity:** 121 kWh

**Range:** 124 miles

**Max Charge Rate:** 40 kW

**Availability:** In production

**Base Price:** \$850,000

**Website:** <http://en.byd.com/usa/>

**Sales Contact:**

Patrick Duan

Vice President of Operations

[patrick.duan@byd.com](mailto:patrick.duan@byd.com)



## Ford Transit

**Weight Class (GVWR):** Class 2 (6,001-10,000 lbs)

**Payload:** Not available

**Chassis/Body Type:** Chassis Cab

**Energy Storage Capacity:** Not available

**Range:** 93 miles

**Max Charge Rate:** Not available

**Availability:** Pre-production

**Base Price:** Not available

**Website:** <https://media.ford.com/content/fordmedia/fna/us/en/news/2020/03/03/ford-to-offer-all-electric-transit.html>

[BACK TO TOP](#)



## GreenPower EV Star Min-e Bus – 25'

**Weight Class (GVWR):** Class 4 (14,001-16,000 lbs)

**Passenger Capacity:** 19 people

**Chassis/Body Type:** Shuttle Bus

**Energy Storage Capacity:** 118 kWh

**Range:** 150 miles

**Max Charge Rate:** 50 kW

**Availability:** In production

**Base Price:** \$172,900

**Website:** <http://www.greenpowerbus.com/>

**Sales Contact:**

Ryne Shetterly

Vice President

Sales & Marketing

[ryne@greenpowerbus.com](mailto:ryne@greenpowerbus.com)



## Lightning eMotors E-450 Shuttle Bus



**Weight Class (GVWR):** Class 4 (14,001-16,000 lbs)

**Passenger Capacity:** Depends on body configuration

**Chassis/Body Type:** Shuttle Bus

**Energy Storage Capacity:** 86-129 kWh

**Range:** 80-120 miles

**Max Charge Rate:** 13.2-80 kW

**Availability:** In production

**Base Price:** Contact for details

**Website:** <https://lightningemotors.com/lightningelectric-e450-shuttle/>

**Sales Contact:**

Julie Johnson

Enterprise Business Development

[julie.johnson@lightningsystems.com](mailto:julie.johnson@lightningsystems.com)



## Lightning eMotors Transit 350HD Passenger Van



**Sales Contact:**

Julie Johnson

Enterprise Business Development

[julie.johnson@lightningsystems.com](mailto:julie.johnson@lightningsystems.com)

**Weight Class (GVWR):** Class 3 (10,001-11,000 lbs)

**Passenger Capacity:** 14 people + 1 driver

**Chassis/Body Type:** Shuttle Bus

**Energy Storage Capacity:** 80-120 KWh

**Range:** 140-170 miles

**Max Charge Rate:** 13.2-80kW

**Availability:** In production

**Base Price:** Contact for details

**Website:** <https://lightningemotors.com/lightningelectric-ford-transit-shuttle/>

[BACK TO TOP](#)



**Sales Contact:**

Nate Baguio

Vice President of Sales

USA - Buses

[nate.baguio@thelionelectric.com](mailto:nate.baguio@thelionelectric.com)

## Lion Electric eLionM – 26'

**Weight Class (GVWR):** Not available

**Passenger Capacity:** 10-22 people

**Chassis/Body Type:** Shuttle Bus

**Energy Storage Capacity:** 80-160 kWh

**Range:** 70-150 miles

**Max Charge Rate:** 19.2 kW (on-board)

**Availability:** In production

**Base Price:** \$290,000

**Website:** <https://thelionelectric.com/en>



## Micro Bird D-Series E-450

**Weight Class (GVWR):** Class 4 (14,001-16,000 lbs)

**Passenger Capacity:** 29 people

**Chassis/Body Type:** Shuttle Bus

**Energy Storage Capacity:** 88 kWh

**Range:** 100 miles

**Max Charge Rate:** 13 kW

**Availability:** In production

**Base Price:** Not available

**Website:** <https://mbcbus.com/product/d-series/>





## Motiv Power Systems F-59 Shuttle Bus

**Weight Class (GVWR):** Class 6 (19,501-26,000 lbs)

**Payload:** not available

**Chassis/Body Type:** Shuttle Bus

**Energy Storage Capacity:** 127 kWh

**Range:** 105 miles

**Max Charge Rate:** 19.2 kW and 60 kW

**Availability:** In production

**Base Price:** \$228,095

**Website:** [https://www.motivps.com/motivps/  
portfolio-items/epicf59-allelectric-stepvan/](https://www.motivps.com/motivps/portfolio-items/epicf59-allelectric-stepvan/)

**Sales Contact:**

John Felts

Sales Representative

NorCal & NW USA

[john.felts@motivps.com](mailto:john.felts@motivps.com)



## Phoenix Zeus 400 – 22'

**Weight Class (GVWR):** Class 4 (14,001-16,000 lbs)

**Passenger Capacity:** 18 people

**Chassis/Body Type:** Shuttle Bus

**Energy Storage Capacity:** 63-156 kWh

**Range:** 70-160 miles

**Max Charge Rate:** 50 kW

**Availability:** In production

**Base Price:** \$225,000

**Website:** <http://www.phoenixmotorcars.com>

**Sales Contact:**

Thomas Allen  
Sales Manager

[thomasa@phoenixmotorcars.com](mailto:thomasa@phoenixmotorcars.com)



**Sales Contact:**  
Steve Brooks  
VP of Sales  
[steveb@sea-electric.com](mailto:steveb@sea-electric.com)

## SEA Electric Chassis Cab

**Weight Class (GVWR):** Class 4 (14,001-16,000 lbs)

**Payload:** 85% - 90% of conventional load

**Available Models:** SEA 4500

**Energy Storage Capacity:** 100 kWh

**Range:** 170 miles

**Max Charge Rate:** 19.2 kW

**Availability:** In production (conversion and repower)

**Base Price:** Not available

**Website:** <https://www.sea-electric.com/>



**Sales Contact:**  
Steve Brooks  
VP of Sales  
[steveb@sea-electric.com](mailto:steveb@sea-electric.com)

## SEA Electric Cutaways

**Weight Class (GVWR):** Class 3 (10,001-14,000 lbs); Class 4 (14,001-16,000 lbs); Class 5 (16,001-19,500 lbs); Class 6 (19,501-26,000 lbs)

**Payload:** 85% - 90% of conventional load

**Available Models:** SEA 3500/4500; SEA E-450; SEA F-450/550/650

**Energy Storage Capacity:** 100 – 138 kWh

**Range:** 170 – 200 miles

**Max Charge Rate:** 19.2 kW

**Availability:** In production (conversion and repower)

**Base Price:** Not available

**Website:** <https://www.sea-electric.com/>

**Sales Contact:**

Steve Brooks

VP of Sales

[steveb@sea-electric.com](mailto:steveb@sea-electric.com)

## SEA Electric Van

**Weight Class (GVWR):** Class 3 (10,001-14,000 lbs)**Payload:** 85% - 90% of conventional load**Available Models:** Ford Transit EV**Energy Storage Capacity:** 88 kWh**Range:** 190 miles**Max Charge Rate:** 19.2 kW**Availability:** In production (conversion and repower)**Base Price:** Not available**Website:** <https://www.sea-electric.com/>

## SECTION 6

# Electric Transit Buses





## BYD K7 – 30'

**Weight Class (GVWR):** Class 7 (26,001-33,000 lbs)

**Passenger Capacity:** 22 people

**Chassis/Body Type:** Transit Bus

**Energy Storage Capacity:** 180 kWh

**Range:** 137 miles

**Max Charge Rate:** 80 kW

**Availability:** In production

**Base Price:** Not available

**Website:** <http://en.byd.com/usa/>

**Sales Contact:**

Patrick Duan

Vice President of Operations

[patrick.duan@byd.com](mailto:patrick.duan@byd.com)





## BYD C8M – 35'

**Weight Class (GVWR):** Class 8 (33,001+ lbs)

**Passenger Capacity:** 42 people

**Chassis/Body Type:** Transit Bus

**Energy Storage Capacity:** 313 kWh

**Range:** 200 miles

**Max Charge Rate:** 80 kW

**Availability:** In production

**Base Price:** Not available

**Website:** <http://en.byd.com/usa/>

**Sales Contact:**

Patrick Duan

Vice President of Operations

[patrick.duan@byd.com](mailto:patrick.duan@byd.com)

**Sales Contact:**

Patrick Duan  
Vice President of Operations  
[patrick.duan@byd.com](mailto:patrick.duan@byd.com)

## BYD K9S – 35'

**Weight Class (GVWR):** Class 7 (26,001-33,000 lbs)

**Passenger Capacity:** 32 people

**Chassis/Body Type:** Transit Bus

**Energy Storage Capacity:** 352 kWh

**Range:** 145 miles

**Max Charge Rate:** 80 kW

**Availability:** In production

**Base Price:** Not available

**Website:** <http://en.byd.com/usa/>



## BYD C9M – 40'

**Weight Class (GVWR):** Class 8 (33,001+ lbs)

**Passenger Capacity:** 49 people

**Chassis/Body Type:** Transit Bus

**Energy Storage Capacity:** 352 kWh

**Range:** 200 miles

**Max Charge Rate:** 80 kW

**Availability:** In production

**Base Price:** Not available

**Website:** <http://en.byd.com/usa/>

**Sales Contact:**

Patrick Duan

Vice President of Operations

[patrick.duan@byd.com](mailto:patrick.duan@byd.com)



## BYD K9 – 40'

**Weight Class (GVWR):** Class 8 (33,001+ lbs)

**Passenger Capacity:** 37 people

**Chassis/Body Type:** Transit Bus

**Energy Storage Capacity:** 324 kWh

**Range:** 156 miles

**Max Charge Rate:** 80 kW

**Availability:** In production

**Base Price:** Not available

**Website:** <http://en.byd.com/usa/>

**Sales Contact:**

Patrick Duan

Vice President of Operations

[patrick.duan@byd.com](mailto:patrick.duan@byd.com)



## BYD C10M – 45'

**Weight Class (GVWR):** Class 8 (33,001+ lbs)

**Passenger Capacity:** 58 people

**Chassis/Body Type:** Transit Bus

**Energy Storage Capacity:** 446 kWh

**Range:** 230 miles

**Max Charge Rate:** 200 kW

**Availability:** In production

**Base Price:** Not available

**Website:** <http://en.byd.com/usa/>

**Sales Contact:**

Patrick Duan

Vice President of Operations

[patrick.duan@byd.com](mailto:patrick.duan@byd.com)



## BYD K11 – 60'

**Weight Class (GVWR):** Class 8 (33,001+ lbs)

**Passenger Capacity:** 46-55 people

**Chassis/Body Type:** Transit Bus

**Energy Storage Capacity:** 578 kWh

**Range:** 220 miles

**Max Charge Rate:** 200 kW

**Availability:** In production

**Base Price:** Not available

**Website:** <http://en.byd.com/usa/>

**Sales Contact:**

Patrick Duan

Vice President of Operations

[patrick.duan@byd.com](mailto:patrick.duan@byd.com)

## GILLIG



## Gillig Low Floor Plus – 30-40'

**Weight Class (GVWR):** Class 8 (33,001+ lbs)

**Passenger Capacity:** Not available

**Chassis/Body Type:** Transit Bus

**Energy Storage Capacity:** 296-444 kWh

**Range:** Not available

**Max Charge Rate:** Not available

**Availability:** In production

**Base Price:** Not available

**Website:** <https://www.gillig.com/>

**Sales Contact:**

Bus Sales

(510) 785-1500

[sales@gillig.com](mailto:sales@gillig.com)





## GreenPower EV250 – 30-32'

**Weight Class (GVWR):** Class 8 (33,001+ lbs)

**Passenger Capacity:** 25 people + standees

**Chassis/Body Type:** Transit Bus

**Energy Storage Capacity:** 210 kWh

**Range:** 175+ miles

**Max Charge Rate:** 100 kW

**Availability:** In production

**Base Price:** \$499,900

**Website:** <http://www.greenpowerbus.com/>

**Sales Contact:**

Ryne Shetterly

Vice President

Sales & Marketing

[ryne@greenpowerbus.com](mailto:ryne@greenpowerbus.com)



## GreenPower EV300 – 35'

**Weight Class (GVWR):** Class 8 (33,001+ lbs)

**Passenger Capacity:** 34 people + standees

**Chassis/Body Type:** Transit Bus

**Energy Storage Capacity:** 260 kWh

**Range:** 175+ miles

**Max Charge Rate:** 100 kW

**Availability:** In production

**Base Price:** Not available

**Website:** <http://www.greenpowerbus.com/>

**Sales Contact:**

Ryne Shetterly

Vice President

Sales & Marketing

[ryne@greenpowerbus.com](mailto:ryne@greenpowerbus.com)



## GreenPower EV350 – 40'

**Weight Class (GVWR):** Class 8 (33,001+ lbs)

**Passenger Capacity:** 40 people + standees

**Chassis/Body Type:** Transit Bus

**Energy Storage Capacity:** 320 kWh

**Range:** 185+ miles

**Max Charge Rate:** 200 kW

**Availability:** In production

**Base Price:** \$749,000

**Website:** <http://www.greenpowerbus.com/>

**Sales Contact:**

Ryne Shetterly

Vice President

Sales & Marketing

[ryne@greenpowerbus.com](mailto:ryne@greenpowerbus.com)



## GreenPower EV400 – 45'

**Weight Class (GVWR):** Class 8 (33,001+ lbs)

**Passenger Capacity:** 44 people + standees

**Chassis/Body Type:** Transit Bus

**Energy Storage Capacity:** 320 kWh

**Range:** 185+ miles

**Max Charge Rate:** 200 kW

**Availability:** Pre-production

**Base Price:** Not available

**Website:** <http://www.greenpowerbus.com/>

**Sales Contact:**

Ryne Shetterly

Vice President

Sales & Marketing

[ryne@greenpowerbus.com](mailto:ryne@greenpowerbus.com)



## Lightning eMotors City Transit Bus Repower

**Weight Class (GVWR):** Class 7 (26,001-33,000 lbs)

**Passenger Capacity:** 20-30 people

**Chassis/Body Type:** Transit Bus

**Energy Storage Capacity:** 320 kWh

**Range:** 140-200 miles

**Max Charge Rate:** 80 kW

**Availability:** In production

**Base Price:** Contact for details

**Website:** <https://lightningemotors.com/buses/>

**Sales Contact:**

Julie Johnson

Enterprise Business Development

[julie.johnson@lightningsystems.com](mailto:julie.johnson@lightningsystems.com)



## New Flyer XE35 – 35'

**Weight Class (GVWR):** Class 7 (26,001-33,000 lbs)

**Passenger Capacity:** 67 people

**Chassis/Body Type:** Transit Bus

**Energy Storage Capacity:** 100-454 kWh

**Range:** 50-215 miles

**Max Charge Rate:** 150 kW (depot), 450 kW (on-route)

**Availability:** In production

**Base Price:** \$735,000-\$825,000

**Website:** <https://www.newflyer.com/>

**Sales Contact:**

Daniel Trujillo  
Regional Sales Manager  
California

[Daniel\\_Trujillo@newflyer.com](mailto:Daniel_Trujillo@newflyer.com)



## New Flyer XE40 – 40'

**Weight Class (GVWR):** Class 8 (33,001+ lbs)

**Passenger Capacity:** 80 people

**Chassis/Body Type:** Transit Bus

**Energy Storage Capacity:** 100-545 kWh

**Range:** 50-260 miles

**Max Charge Rate:** 150 kW (depot), 450 kW (on-route)

**Availability:** In production

**Base Price:** \$750,000-\$920,000

**Website:** <https://www.newflyer.com/>

**Sales Contact:**

Daniel Trujillo  
Regional Sales Manager  
California

[Daniel\\_Trujillo@newflyer.com](mailto:Daniel_Trujillo@newflyer.com)





## New Flyer XE60 – 60'

**Weight Class (GVWR):** Class 8 (33,001+ lbs)

**Passenger Capacity:** 123 people

**Chassis/Body Type:** Transit Bus

**Energy Storage Capacity:** 320-818 kWh

**Range:** 100-275 miles

**Max Charge Rate:** 150 kW (depot), 450 kW (on-route)

**Availability:** In production

**Base Price:** \$1,100,000-\$1,210,000

**Website:** <https://www.newflyer.com/>

**Sales Contact:**

Daniel Trujillo  
Regional Sales Manager  
California

[Daniel\\_Trujillo@newflyer.com](mailto:Daniel_Trujillo@newflyer.com)

**NOVA**BUS



## NovaBus LFSe+ – 40'

**Weight Class (GVWR):** Class 7 (26,001-33,000 lbs)

**Passenger Capacity:** 68

**Chassis/Body Type:** Transit Bus

**Energy Storage Capacity:** 594 kWh

**Range:** 211-292 miles

**Max Charge Rate:** 150 kW (depot), 450 kW (on-route)

**Availability:** In production

**Base Price:** Not available

**Website:** <http://novabus.com/>

**Sales Contact:**  
Denton Shuey  
[denton.shuey@volvo.com](mailto:denton.shuey@volvo.com)



## Proterra Catalyst XR – 35' and 40'

**Weight Class (GVWR):** Class 8 (33,001+ lbs)

**Passenger Capacity:** 29 and 40 people

**Chassis/Body Type:** Transit Bus

**Energy Storage Capacity:** 220 kWh

**Range:** 92-125 miles

**Max Charge Rate:** 73 kW (manual); 165 kW (overhead)

**Availability:** In production

**Base Price:** Not available

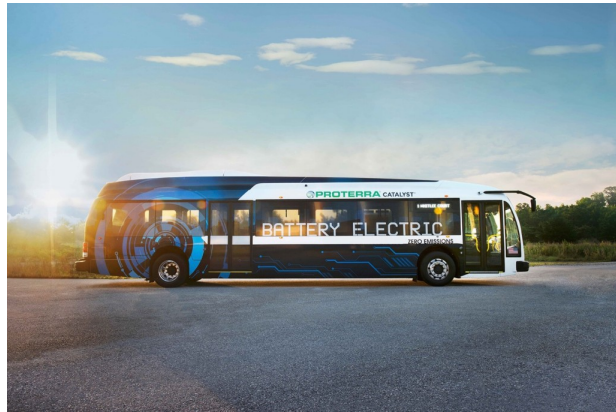
**Website:** <https://www.proterra.com/>

**Sales Contact:**

Bill Williams

Director, Commercial Sales

[bwilliams@proterra.com](mailto:bwilliams@proterra.com)



## Proterra Catalyst E2 – 35'

**Weight Class (GVWR):** Class 8 (33,001+ lbs)

**Passenger Capacity:** 29 people

**Chassis/Body Type:** Transit Bus

**Energy Storage Capacity:** 440 kWh

**Range:** 172-240 miles

**Max Charge Rate:** 132 kW (manual); 330 kW (overhead)

**Availability:** In production

**Base Price:** Not available

**Website:** <https://www.proterra.com/>

**Sales Contact:**

Bill Williams

Director, Commercial Sales

[bwilliams@proterra.com](mailto:bwilliams@proterra.com)



## Proterra Catalyst E2 and E2 max – 40'

**Weight Class (GVWR):** Class 8 (33,001+ lbs)

**Passenger Capacity:** 40 people

**Chassis/Body Type:** Transit Bus

**Energy Storage Capacity:** 440 kWh (E2); 660 kWh (E2 max)

**Range:** 163 – 232 miles (E2); 221 – 329 miles (E2 max)

**Max Charge Rate:** 132 kW (manual); 330 kW (overhead)

**Availability:** In production

**Base Price:** Not available

**Website:** <https://www.proterra.com/>

**Sales Contact:**

Bill Williams

Director, Commercial Sales

[bwilliams@proterra.com](mailto:bwilliams@proterra.com)

SECTION 7

# Double Decker Electric Transit Buses





## BYD C8MS – 35' Double Decker

**Weight Class (GVWR):** Class 8 (33,001+ lbs)

**Passenger Capacity:** 51 people

**Chassis/Body Type:** Transit Bus

**Energy Storage Capacity:** 313 kWh

**Range:** 170 miles

**Max Charge Rate:** 80 kW

**Availability:** In production

**Base Price:** Not available

**Website:** <http://en.byd.com/usa/>

**Sales Contact:**

Patrick Duan

Vice President of Operations

[patrick.duan@byd.com](mailto:patrick.duan@byd.com)





## GreenPower EV550 – 45' Double Decker



**Weight Class (GVWR):** Class 8 (33,001+ lbs)

**Passenger Capacity:** 100 people + standees

**Chassis/Body Type:** Transit Bus

**Energy Storage Capacity:** 478 kWh

**Range:** 240+ miles

**Max Charge Rate:** 200 kW

**Availability:** In production

**Base Price:** \$1,069,000

**Website:** <http://www.greenpowerbus.com/>

**Sales Contact:**

Ryne Shetterly

Vice President

Sales & Marketing

[ryne@greenpowerbus.com](mailto:ryne@greenpowerbus.com)

# Thank you.

See more electric vehicles offerings and specs at CALSTART:  
<https://globaldrivetozero.org/resources/zero-emission-technology-inventory/>

Want to learn more about the program, visit  
[sdge.com/business/electric-vehicles/lovelectric](https://sdge.com/business/electric-vehicles/lovelectric)

Ready to talk to a customer onboarding specialist, visit  
[sdge.com/mdhd-interest-form](https://sdge.com/mdhd-interest-form)

