



A Sempra Energy utility®

Power Your Drive *for* Fleets

# Lower Rates for Charging Your Electric Fleet

Start saving money now with reduced demand charges



Beyond emission reductions and sustainability goals, long-term cost savings is a major reason that fleets are choosing to deploy electric vehicles (EVs). However, fluctuating electricity prices during the day can deter businesses from making that transition. While demand charges often mean lower overall energy costs for many business customers, they can increase the cost of charging for fleets that require large amounts of power to charge medium- and heavy-duty electric vehicles.

## How can my business save money?

SDG&E has been authorized to offer an **Interim Rate Waiver** to medium- and heavy-duty fleet customers. This interim waiver will allow eligible customers to take advantage of lower demand charges, which help EV fleets save money starting now.

**Eligible customers have the opportunity to save up to 50% on electricity costs compared to the cost of fueling with diesel.**



Want to learn more? Visit [sdge.com/interim-rate-waiver](https://sdge.com/interim-rate-waiver)

## Is my business eligible for reduced rates?

The **Interim Rate Waiver** is available to the broad range of on- and off-road medium- and heavy-duty vehicles below.

The **Interim Rate Waiver** is optional. Customers can opt-in if they meet the following requirements:

- Operate medium- or heavy-duty EVs
- Operate DC fast charging equipment
- Operate separately metered EV charging equipment

### VEHICLE TYPE ESTIMATES

#### MEDIUM DUTY



Delivery & shuttle (Class 2-6)  
>6,000 LBs

#### HEAVY DUTY



Transit (Class 7-8)



School bus (Class 6-7)



Goods movement (Class 7-8)



Other (Class 7-8)

#### OFF-ROAD



Trucks stop electrification



Transport refrigeration units



Yard trucks



Airport ground support equipment



Forklifts (Class 2 or higher)  
>6,000 LBs

## What are the reduced Interim Waiver rates?

The discounted Time of Use (TOU-M) energy charges paid per kilowatt-hour (kWh) are listed in the table below. These rates also have a steep differential between on-peak and super off-peak prices to encourage customers to charge during periods of low demand.

The **Interim Rate Waiver** is a temporary rate. It will only be available until the EV-HP rate is opened to customers and will close entirely six months later.

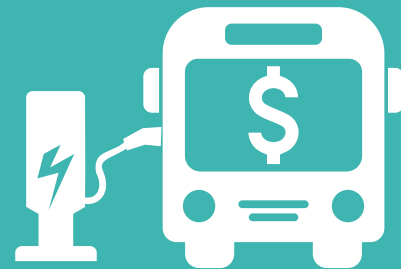
*Note: Summer pricing is June through October. Winter pricing is November through May. EV pricing plans bill you for the time of day you use electricity, not just on the amount of electricity you use. Prices valid as of 5/29/20.*

TOU-M Energy Charges for Bundled Customers		
	Summer	Winter
Peak	\$0.39	\$0.16
Off-peak	\$0.19	\$0.16
Super Off-peak	\$0.11	\$0.11

Want to learn more? Visit [sdge.com/interim-rate-waiver](https://sdge.com/interim-rate-waiver)

## Coming in 2022: High-Power Electric Vehicle Rate (EV-HP)

SDG&E is working to not just reduce, but eliminate, demand charges for EV fleet customers with a simpler, more cost-effective subscription pricing plan.



The pricing plan, recently approved by the California Public Utilities Commission (CPUC) and expected to roll out in January 2022, will allow customers to choose the amount of power they need to charge their vehicles and pay for it with a monthly subscription fee—similar to a cell phone plan that lets customers choose the amount of data they will use.

This plan offers fleets lower pricing, increased stability, and simpler billing so they can more accurately plan for their fleet's energy usage each month.

### What are demand charges?

Demand charges are fees applied to utility electric bills that are based on demand at any given time rather than total energy use.

While demand charges can actually lower bills for many large customers, they can be a challenge for charging medium- and heavy-duty EVs.

The EV-HP pricing plan would eliminate demand charges and encourage fleet customers to charge their vehicles during off-peak, grid-friendly hours.

## Power Your Drive for Fleets

SDG&E's newly launched program, **Power Your Drive for Fleets**, helps fleet owners and operators reduce operating costs, eliminate emissions, and simplify vehicle maintenance by transitioning to electric vehicles. The program connects fleets with resources and financial incentives to easily and cost-effectively design and install the charging infrastructure needed to power medium- and heavy-duty electric fleets.

For more information on the program, visit: [sdge.com/evfleets](https://sdge.com/evfleets)

Want to learn more? Visit [sdge.com/interim-rate-waiver](https://sdge.com/interim-rate-waiver)