

Instructions to access the map

The following instructions is how to Log in and navigate on the Interconnection Map.

- 1. Click on the links below to see the log-in screen.

URL: Link to the Enhanced ICA Interconnection Map. It displays the available capacity on the distribution system down to the section or node level.

<https://interconnectionmapsdge.extweb.sempra.com/>

- 2. Enter your **Username** and **Password** given in the email and click on **Sign-In**.

External_Cloud wants to access your ArcGIS Online account information

Sign in to San Diego Gas & Electric

Username

Password

☐ Keep me signed in


SIGN IN


CANCEL

Forgot password?

Forgot username?

External_Cloud developed by:





San Diego Gas & Electric

Interactive Map Navigation Tools

2 Different map navigation Zoom tools.

Full Extent

Next Extent

Previous Extent

Zoom Out (Draw a box)

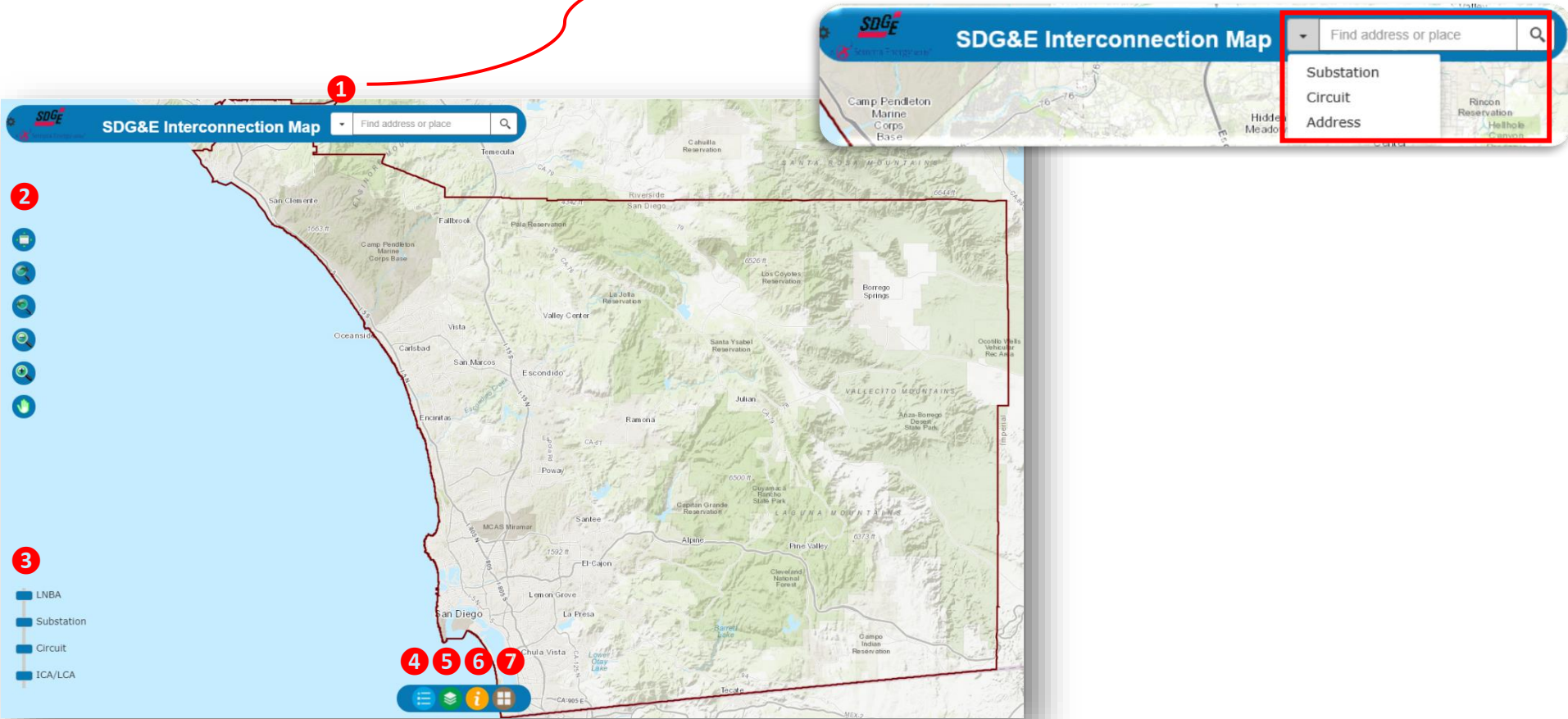
Zoom In (Draw a box)

Pan

Or use the scroll wheel (or mouse wheel) to Zoom in or Zoom out

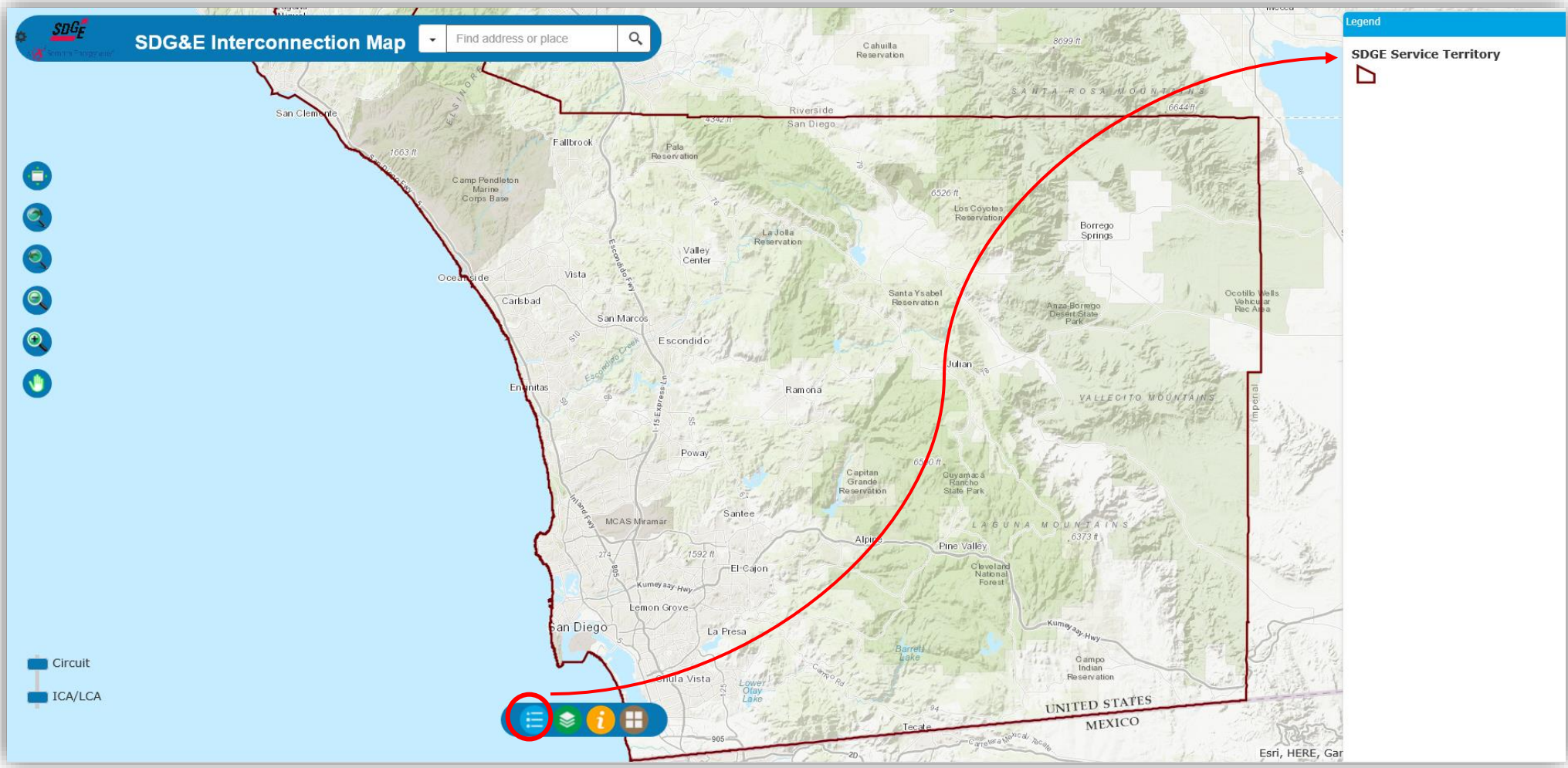
3 Click to a specific Zoom level/layer

1 Click on the drop down to select the desire search.
Search by *Address*, *Circuit* or *Substation*



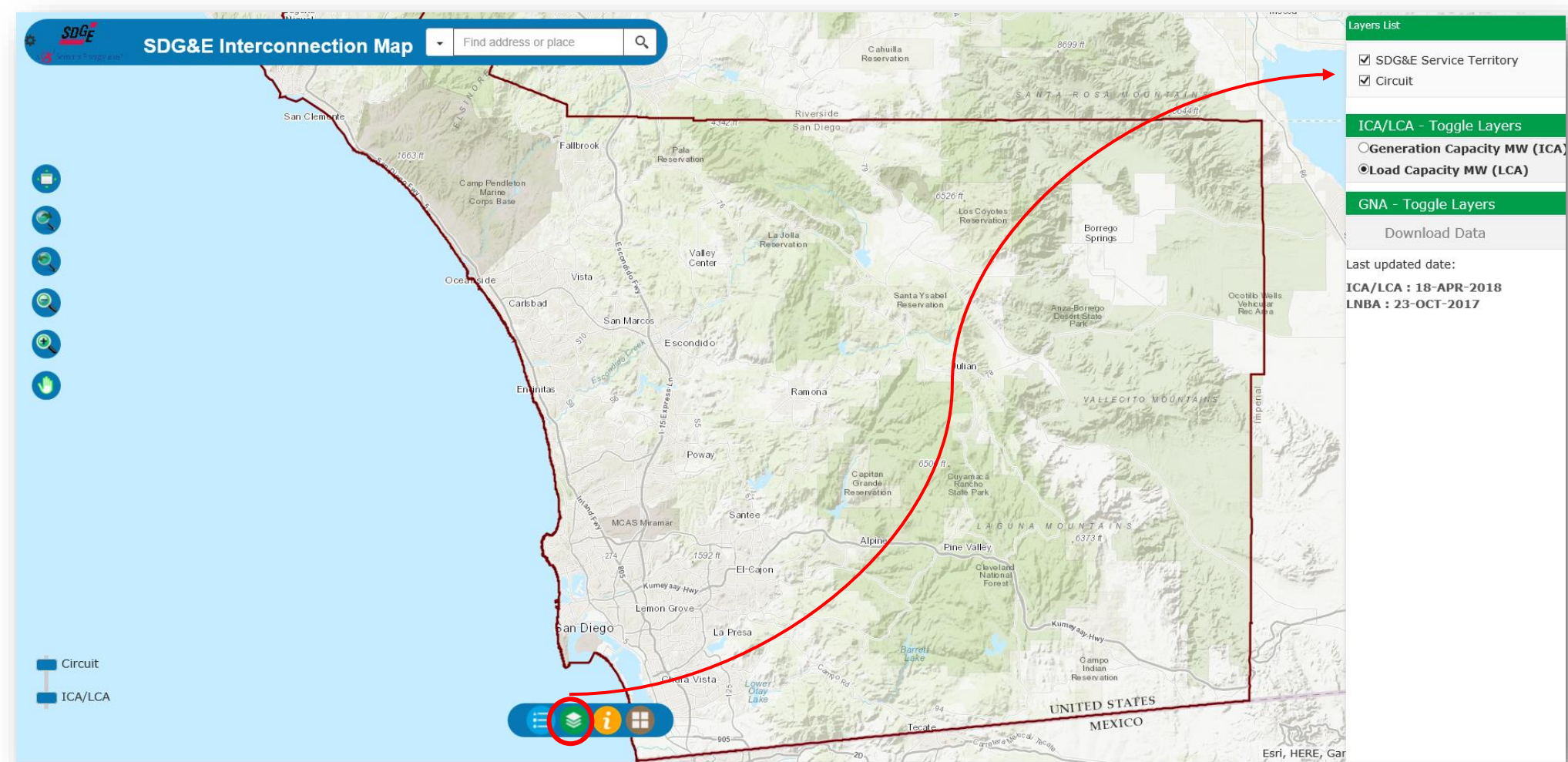
SDG&E Interconnection Map Instructions

4 Click the below command to display the Legend on the map view. Zooming in might change the Legend to show the layer features being displayed on the map.



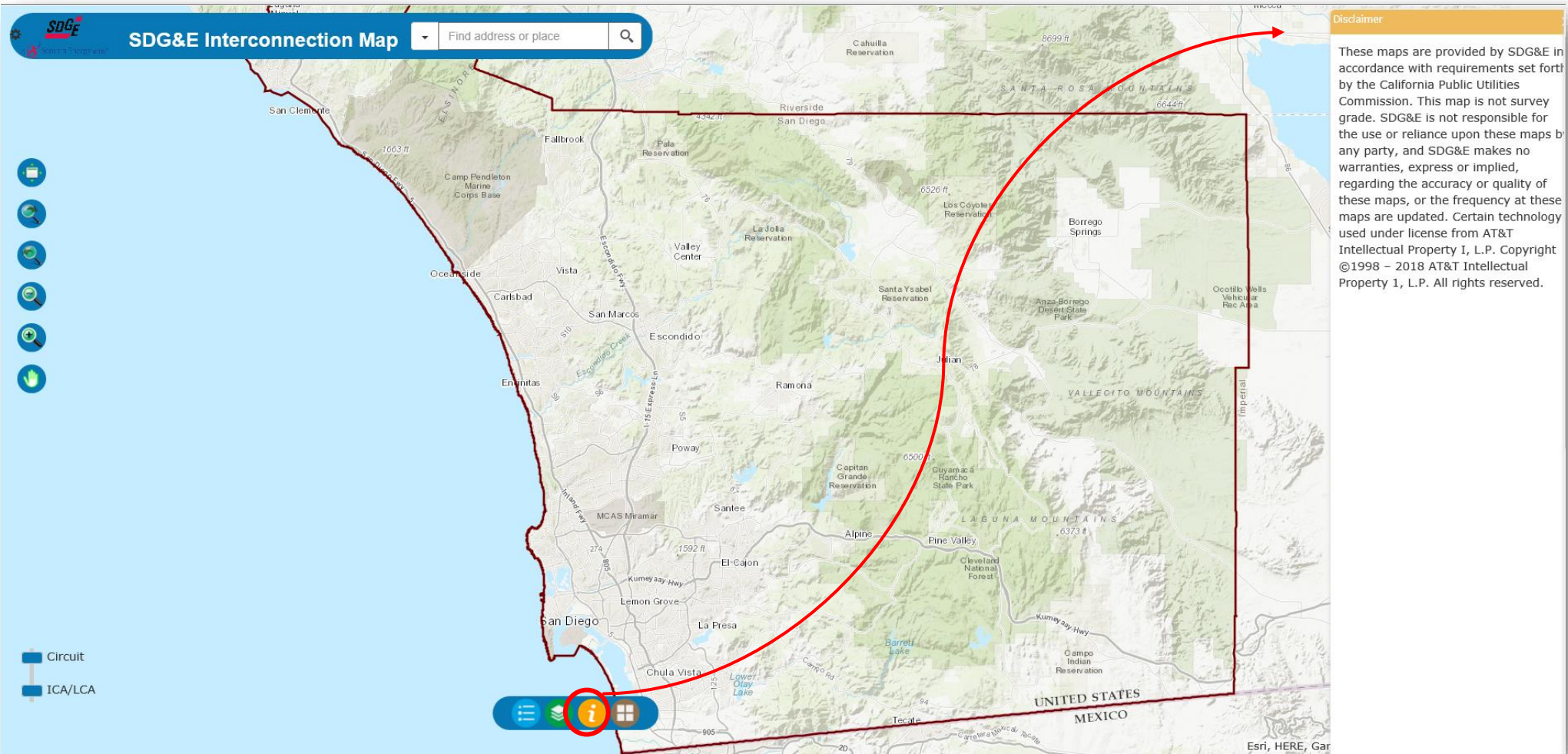
SDG&E Interconnection Map Instructions

5 Click the below command to select the layer to be displayed or to toggle different layer(s) ON and OFF



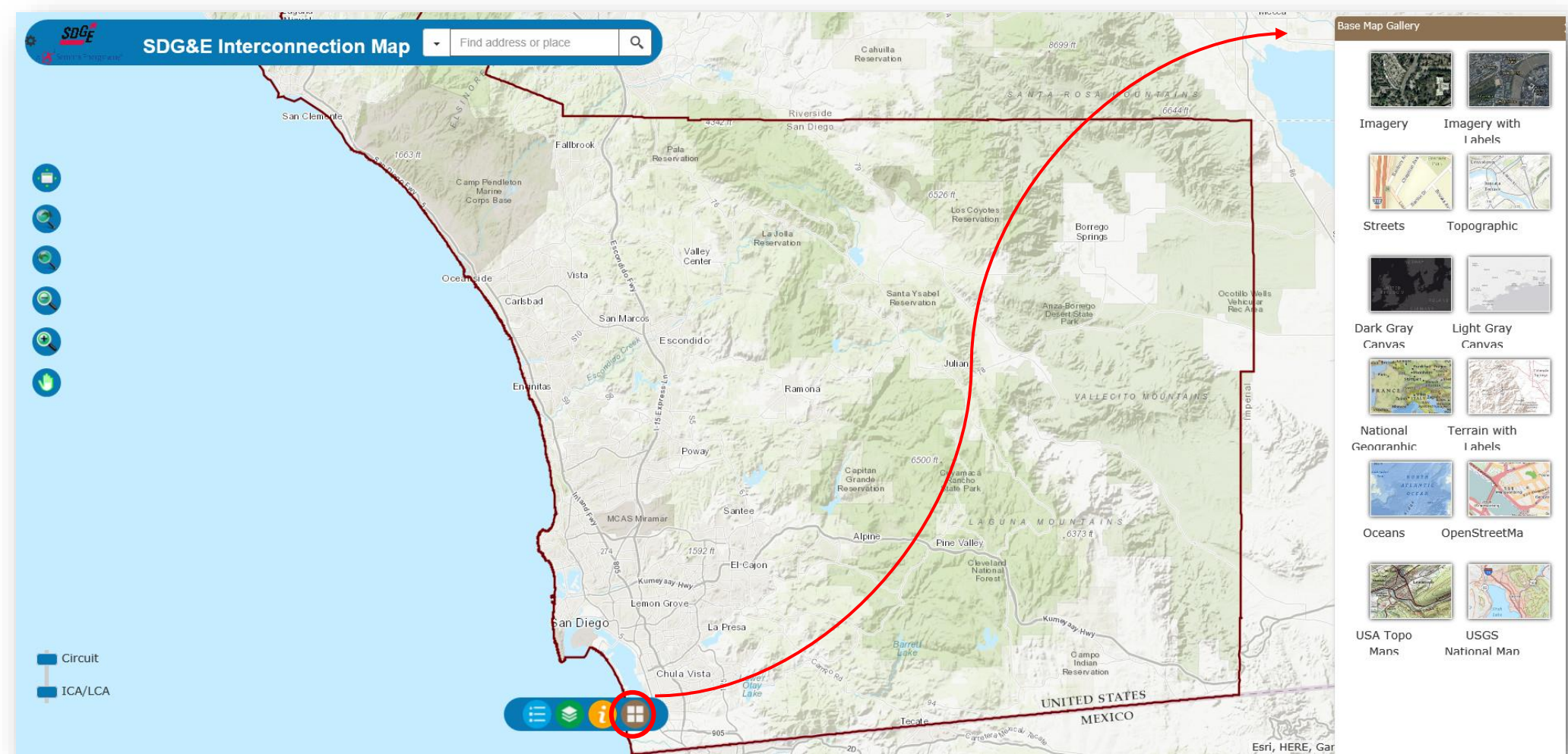
SDG&E Interconnection Map Instructions

6 Click the below command to see a disclaimer



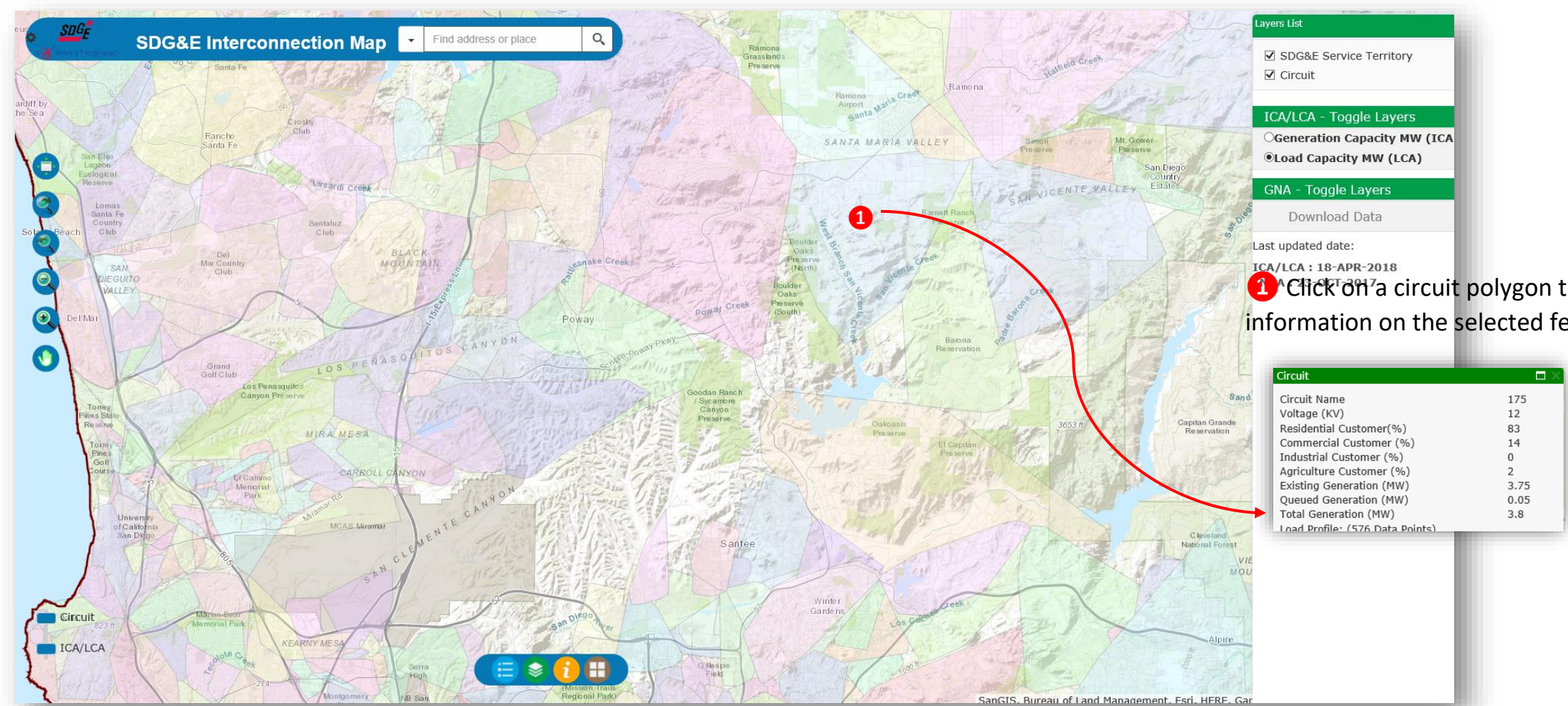
SDG&E Interconnection Map Instructions

7 Click the below command to choose different base maps



Interactive Map Select Features

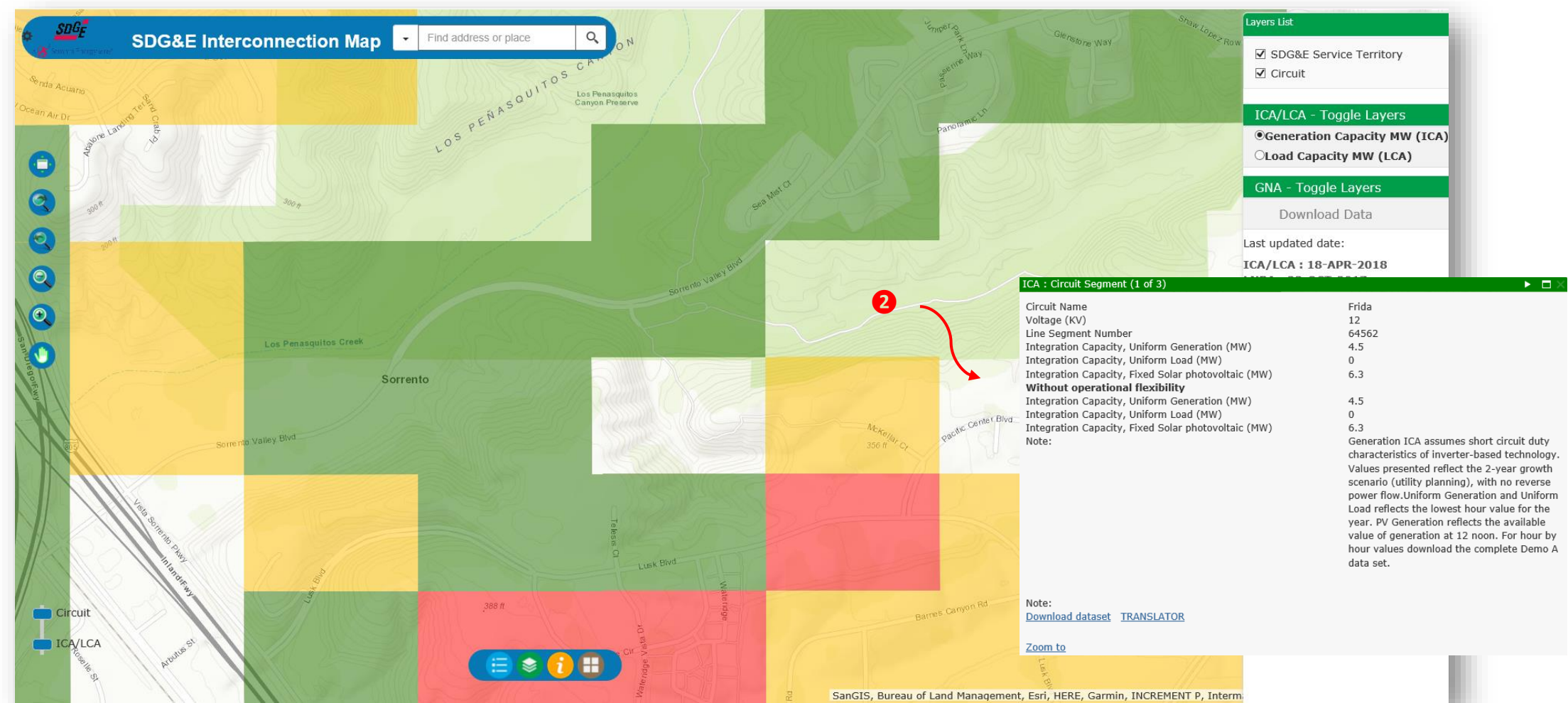
1 Circuit



Note: On any pop-up window, there is a link(s) in blue to download the data being display in the window. A zip file will be downloaded containing an excel file(s) with the information.

SDG&E Interconnection Map Instructions

2 ICA Result



2 Click on the grid to get a pop-up window to see information on the selected feature. Click on the link in blue to download the ICA values on the line segment or the “ICA Translator” to get profiles.