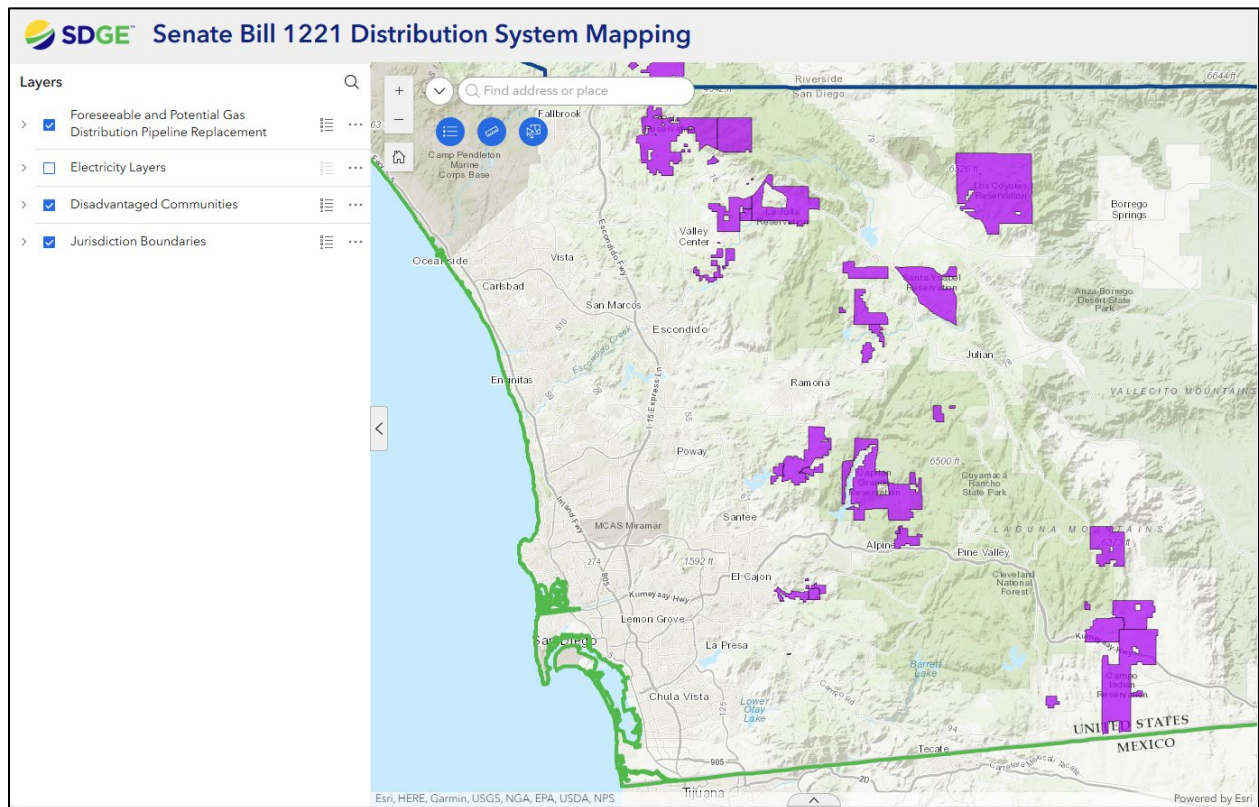




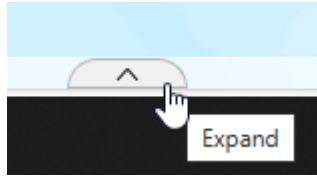
Senate Bill 1221 Distribution System Mapping User Guide

Overview

This user guide provides step-by-step instructions for using the Senate Bill 1221 Distribution System Map. This interactive web map provides an overview of potential natural gas distribution replacement projects for the next ten years. It includes tools for zooming, panning, and querying data in real-time, covering jurisdictional boundaries, tribal areas, census tracts, and disadvantaged communities.



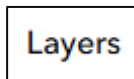
Widgets Overview



- **Attribute Table**

- Displays tabular data for selected layers.
- Allows sorting, filtering, and editing of attributes.

- **Layer List**



- Shows all available layers in the map.
- Allows toggling visibility and accessing layer properties.

- **Legend**



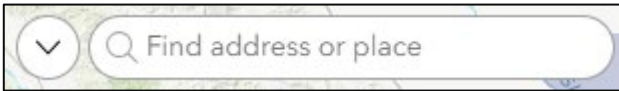
- Displays symbols and labels for map features.
- Helps users understand the map's symbology.

- **Select**



- Enables selection of features on the map.
- Supports various selection methods (point, rectangle, polygon).

○



- **Location Search Tools**

- Allows users to search for locations by address or coordinates.
- Provides quick navigation to searched locations.



- **Measure**

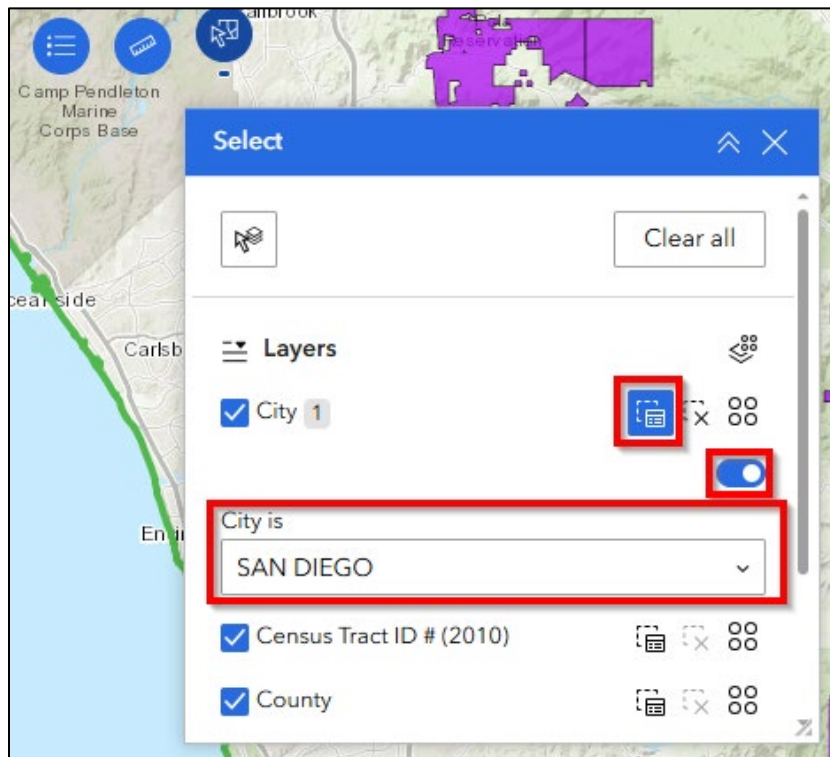
- Enables tools for measuring on the map
- Both Distance and Area are supported

How to Generate Statistics

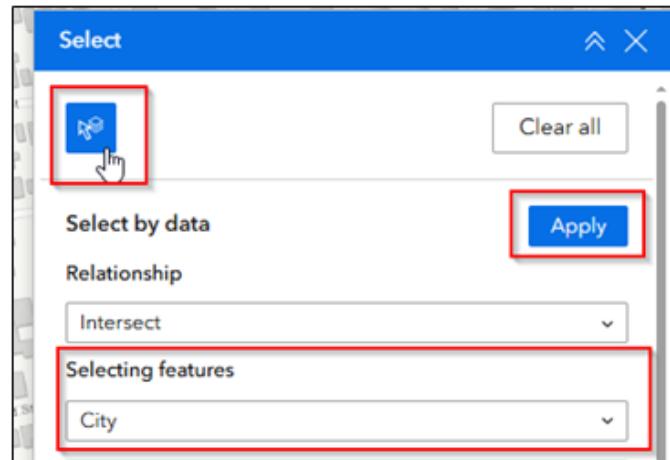


- Open the **Select Tool**

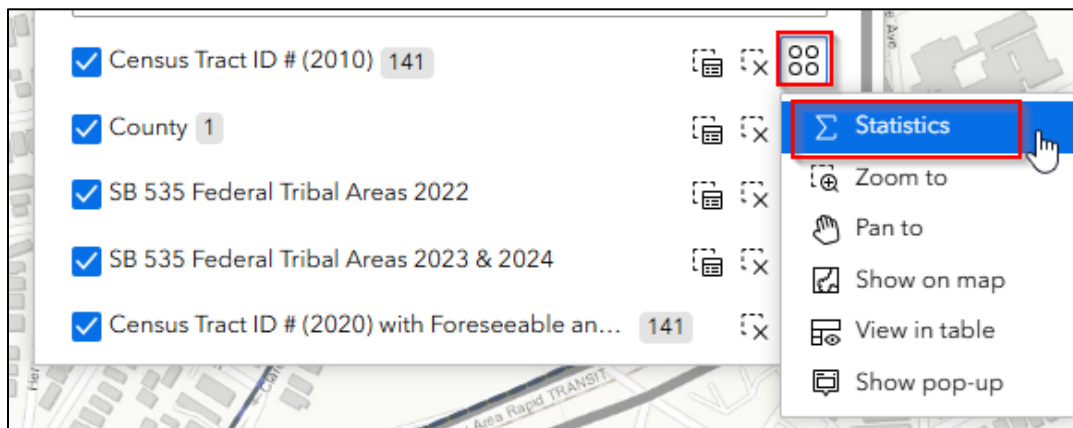
- Set Attribute Selection: Select geographic boundary of interest and apply an attribute filter.



- Select by Data: Enable Select by data button, then choose Selecting features from dropdown, and click Apply.



- In the results, select the four dots and select Statistics for summary of the data



Foreseeable Gas Distribution Pipeline Replacement Projects Data Overview

Definition: Natural gas distribution main pipeline replacement projects forecast to begin during the next ten years, identified consistent with each utility’s existing project selection methods, an annual replacement rate consistent with the mileage rates for each natural gas distribution replacement rate code approved in each utility’s most recently adopted general rate case decision, totaling at least 700 main miles for SDG&E. The next ten years are January 1, 2026, through December 31, 2035.

Units: Feet

Field Name	Total	Average	Median	Minimum	Maximum	Standard Deviation
Length_GasProjectYear_2026	11,138.5	1,113.8	1,088.1	8.4	2,425.3	747.5
Length_GasProjectYear_2027	25,009.8	2,273.6	1,342.3	308.2	10,341.3	2,730.8
Length_GasProjectYear_TBD	3,664,458.4	950.3	552.4	2.0	13,860.8	1,205.6

Foreseeable gas distribution pipeline replacement projects included on the map are driven by the following program:

Program:

Distribution Integrity Management Program (DIMP) - Vintage Integrity Plastic Plan (VIPP)

GRC Budget Code:

00546

Target Materials and years:

Aldyl-A, Installed prior to 1986

Distribution Integrity Management Program:

Yes

Tips and Best Practices

- **Customize Layer Properties:** Adjust layer settings to enhance map visualization and user experience.
- **Utilize Selection Methods:** Choose the appropriate selection method based on the task at hand.

Troubleshooting

- **Widget Not Responding:** Refresh the page or clear browser cache.
- **Data Not Displaying:** Check layer visibility and ensure data is correctly loaded.

- **Search Issues:** Verify the accuracy of the entered address or coordinates.

Priority Neighborhood Decarbonization Zones (PNDZ)

On December 18, 2025, the California Public Utilities Commission (CPUC) issued Decision (D.) 25-12-042 establishing the initial set of Priority Neighborhood Decarbonization Zones (PNDZs), as required by Public Utilities Code Section 662(a). These PNDZs are geographic areas within which the CPUC may authorize pilot projects through a voluntary program to facilitate cost-effective zero emissions alternatives in lieu of planned natural gas system replacement projects. As specified by Public Utilities Code Section 662(a)(1)-(4), in designating the PNDZs, the CPUC considered:

- Presence of disadvantaged or low-income communities in high-temperature climate zones or low-temperature climate zones that disproportionately lack cooling or heating.
- Presence of environmental and social justice communities as defined in the commission’s Environmental and Social Justice Action Plan.
- Availability of supportive local government or community partners.
- Concentration of natural gas distribution line replacement projects identified in the map submitted pursuant to Public Utilities Code Section 661.

Pursuant to (D.) 25-12-042, the following census tracts in SDG&E’s service territory have been designated as PNDZs in the SDG&E service territory:

Tract ID	City	County	Requested By:	Gas Project Miles Percentage	Gas Project Miles (2028-2035)	Service Density (services/mi of main)	Regulator Stations
6073004102	San Diego	San Diego	See footnote 1	70%	2.14	99	0
6073004600	San Diego	San Diego	See footnote 1	77%	2.79	91	0
6073019805	Oceanside, Vista	San Diego	See footnote 2	56%	6.36	98	0

¹ San Diego County, City of San Diego, Environmental Center of San Diego, San Diego Building Electrification Coalition, Climate Action Campaign, and CleanEarth4Kids.org

² San Diego County, Environmental Center of San Diego, San Diego Building Electrification Coalition, Climate Action Campaign, and CleanEarth4Kids.org

6073016607	Santee	San Diego	See footnote 2	55%	10.85	97	1
6073008377	San Diego	San Diego	See footnote 1	50%	0.74	38	0
6073020024	San Marcos	San Diego	See footnote 2	52%	5.47	89	0
6073000302	San Diego	San Diego	See footnote 1	68%	2.69	82	1
6073008357	San Diego	San Diego	See footnote 1	55%	4.53	95	2
6073010109	San Diego	San Diego	See footnote 1	46%	3.58	133	0
6073008362	San Diego	San Diego	See footnote 1	58%	3.35	36	0
6073004501	San Diego	San Diego	See footnote 1	44%	1.41	116	0
6073000500	San Diego	San Diego	See footnote 1	44%	2.68	135	0
6073005601	San Diego	San Diego	See footnote 1	80%	1.65	48	0
6073005301	San Diego	San Diego	See footnote 1	59%	2.08	49	1
6073004900	San Diego	San Diego	See footnote 1	25%	1.79	116	0
6073003113	San Diego	San Diego	See footnote 1	42%	4.70	107	0
6073005801	San Diego	San Diego	See footnote 1	48%	1.16	50	0
6073020015	Carlsbad	San Diego	See footnote 2	38%	5.68	83	1
6073013415	Chula Vista	San Diego	See footnote 3	39%	1.98	101	2
6073010110	San Diego	San Diego	See footnote 1	40%	4.70	101	0
6073006000	San Diego	San Diego	See footnote 1	53%	4.80	81	0
6073020025	San Marcos	San Diego	See footnote 2	39%	5.50	68	0

³ Chula Vista, San Diego County, Environmental Center of San Diego, San Diego Building Electrification Coalition, Climate Action Campaign, and CleanEarth4Kids.org

6073019305	Oceanside	San Diego	See footnote 2	38%	4.17	122	1
6073005201	San Diego	San Diego	See footnote 1	47%	1.45	27	0
6073000201	San Diego	San Diego	See footnote 1	41%	2.38	106	0
6073004800	San Diego	San Diego	See footnote 1	37%	1.88	134	0
6073010111	San Diego	San Diego	See footnote 1	44%	1.66	103	0
6073013307	Chula Vista	San Diego	See footnote 3	22%	1.46	109	0
6073013205	Chula Vista	San Diego	See footnote 3	16%	1.24	42	0
6073012102	National City	San Diego	See footnote 2	11%	0.60	99	0
6073003001	San Diego	San Diego	See footnote 1	15%	1.40	119	0

Units: Feet

Tract ID	Total	Average	Median	Minimum	Maximum	Standard Deviation
6073000201	14,874.90	1,239.58	1,085.62	62.88	4,020.06	1,162.34
6073000302	27,235.44	1,237.97	1,204.52	4.00	3,929.22	919.62
6073000500	16,990.45	2,123.81	2,660.60	93.41	3,707.40	1,462.54
6073003001	7,394.97	1,056.42	1,064.48	125.85	2,696.78	836.82
6073003113	38,409.32	1,477.28	1,217.25	169.91	7,161.51	1,348.81
6073004102	15,936.09	1,328.01	1,306.80	23.00	2,481.21	786.49
6073004501	17,155.85	1,319.68	1,042.56	102.32	3,989.88	1,031.44
6073004600	8,340.69	926.74	1,082.24	5.54	1,856.14	743.51
6073004800	9,448.49	1,049.83	1,330.76	13.94	2,016.53	706.61
6073005201	11,693.91	1,169.39	1,016.77	165.76	4,279.76	1,144.26
6073005301	11,720.84	468.83	212.06	6.00	2,342.80	569.68
6073005601	13,327.50	888.50	940.41	133.31	1,961.63	596.26
6073005801	9,382.43	781.87	426.00	77.00	2,333.45	759.02
6073006000	18,842.85	785.12	405.07	4.94	3,037.71	813.19
6073008357	26,594.03	1,899.57	774.40	27.00	13,220.92	3,271.85
6073008362	17,714.13	738.09	586.22	5.00	2,500.75	625.84
6073008377	4,115.09	1,028.77	1,027.71	339.02	1,720.66	557.7
6073010109	18,489.77	1,320.70	1,086.01	7.24	3,864.41	1,114.62

6073010110	27,627.27	1,381.36	1,248.84	211.75	3,255.93	905.49
6073010111	11,726.38	2,345.28	2,964.19	200.11	4,937.81	1,766.13
6073012102	3,168.36	633.67	390.22	150.48	1,290.44	478.91
6073013205	6,561.40	596.49	362.66	137.23	1,901.09	502.55
6073013307	11,606.75	1,055.16	504.26	5.00	3,359.73	1,115.65
6073013415	17,739.53	1,971.06	1,757.95	50.95	5,269.30	1,622.48
6073016607	57,364.82	1,303.75	826.04	53.07	7,667.70	1,451.07
6073019305	26,431.07	2,202.59	1,379.84	114.14	5,911.94	1,882.99
6073019805	35,711.07	1,552.66	1,314.07	69.44	5,945.18	1,319.67
6073020015	42,923.02	1,951.05	619.28	36.23	10,107.02	2,743.55
6073020024	29,897.38	1,067.76	967.46	5.00	2,700.07	705.16
6073020025	28,525.42	1,018.76	846.45	9.92	2,464.46	667.53

These PNDZs can be viewed in the Senate Bill 1221 Distribution System Map by selecting the “Priority Neighborhood Decarbonization Zones” layer.

CPUC’s R.24-09-012 Public Comments page is available to provide feedback to the Commission regarding SB1221 & PNDZ implementation here: [Proceeding Details](#)