

**Notice of Preparation  
of an  
Environmental Impact Report  
for the  
Pipeline Safety and Reliability Project –  
New Natural Gas Line 3602 and De-rating Line 1600**

**Application No. A.15-09-013**

**To: All Interested Parties**  
**From: Robert Peterson, CEQA Project Manager, CPUC Energy Division**  
**Date: May 9, 2017**

*Si usted necesita más información en español, por favor, llame al 1-844-312-4776, o envíe un correo electrónico a: [SDgaspipeline@ene.com](mailto:SDgaspipeline@ene.com)*

**A. Introduction**

The California Public Utilities Commission (CPUC) will prepare a Draft and Final Environmental Impact Report (EIR), in compliance with the California Environmental Quality Act (CEQA), that will discuss the environmental impact of the proposed Pipeline Safety and Reliability Project – New Natural Gas Line 3602 and De-rating Line 1600 (PSRP, or proposed project). San Diego Gas & Electric Company (SDG&E) and Southern California Gas Company (SoCalGas) (the applicants) have filed an application with the CPUC for a Certificate of Public Convenience and Necessity (CPCN) for the proposed project.

This Notice of Preparation (NOP) is being distributed to potential responsible and trustee agencies under CEQA, interested parties, and members of the public. The purpose of the NOP is to inform recipients that the CPUC is beginning preparation of an EIR for the proposed project and to solicit information and guidance on the scope and content of the environmental information to be included in the EIR and identify potential alternatives (see Section F of the NOP). This NOP includes a description of the project that SDG&E and SoCalGas propose to construct, information regarding project location, a summary of potential project-related impacts, the times and locations of public scoping meetings, and information on how to provide comments. **This NOP will be circulated for a public review and comment period beginning on May 9, 2017, and ending on June 12, 2017.**

This NOP can be viewed on the CPUC’s website for the proposed project at the following link: <http://sandiegopipeline-psrp.com>.

## **B. Project Background**

The applicants state that the proposed project is needed to advance three fundamental objectives for the integrated SDG&E and SoCalGas natural gas transmission system in San Diego County:

- Implement pipeline safety requirements for existing Line 1600, thereby enabling the applicants to comply with their CPUC-approved Pipeline Safety Enhancement Plan and modernize the system with state-of-the-art materials;
- Improve system reliability and resiliency by minimizing dependence on a single pipeline; and
- Enhance operational flexibility to manage stress conditions by increasing system capacity.

The PSRP would address these objectives by replacing the transmission capacity of the existing Line 1600 with a new 36-inch-diameter gas transmission pipeline, Line 3602.

On September 30, 2015, SDG&E and SoCalGas filed an application and Proponent’s Environmental Assessment (PEA) with the CPUC for a CPCN to construct, operate, and maintain the PSRP. On March 21, 2016, SDG&E and SoCalGas submitted a revised application and a Supplemental PEA for the proposed project. On August 23, 2016, the CPUC deemed the application complete and determined that an EIR would be required for the proposed project, but noted that information gaps in critical areas remained. One of the gaps identified was the lack of a federal lead agency for review pursuant to the National Environmental Policy Act (NEPA) for the approximately 3.5 miles of land crossed by the project within the United States Marine Corps Air Station Miramar (MCAS Miramar).

On March 17, 2017, MCAS Miramar notified the CPUC and the applicants that they would not serve as the federal lead agency for NEPA, nor would they participate in preparation of a joint CEQA/NEPA document for the proposed project. MCAS Miramar noted that, based on the existence of an off-base alternative (Rainbow to Santee Non-Miramar Alternative), the overall project does not depend on a federal action. However, MCAS Miramar will cooperate in the development of the portions of the EIR that address Miramar alternatives.

## **C. Project Description and Location**

The PSRP includes a new San Diego Natural Gas Pipeline (Line 3602) and supporting facilities, as well as de-rating, or lowering the pressure of, the existing Line 1600 and converting it from transmission to distribution use. The major components of the proposed project are described below. The proposed project facilities are illustrated on Figure 1.

### ***Construction and Operation of Line 3602***

Line 3602 would consist of a new, approximately 47-mile-long, 36-inch-diameter natural gas transmission pipeline that would carry natural gas from SDG&E's existing Rainbow Metering Station in Rainbow, California, to a tie-in with SDG&E's existing system within MCAS Miramar.<sup>1</sup> The new pipeline would also necessitate supporting facilities, which would require approximately 2 acres of land. Proposed facilities to support Line 3602 include:

- Construction of a pressure-limiting station;
- Construction of 10 main line valves;
- Construction of three cross-tie facilities for existing Line 1600, Line 1601, and Line 2010; and
- Construction or installation of minor operations support facilities, including pipeline inspection launching and receiving equipment (pig launcher and receiver), a cathodic protection system, and a fiber optic intrusion and leak detection system.

Illustrations of typical right-of-way cross-sections for urban and cross-country areas are included as Figures 2 and 3, and an illustration of typical horizontal directional drill installation is included as Figure 4.

The pipeline would be designed to operate at a maximum of 800 pounds per square inch. The proposed pipeline and associated aboveground facilities would be operated and maintained in accordance with Title 49, Part 192 of the U.S. Code of Federal Regulations. The applicants' existing staff would operate and maintain the pipeline; perform routine maintenance of the pipeline, valves, and pressure-limiting and metering equipment; and respond to emergency situations in accordance with the applicants' operation and maintenance procedures used for existing facilities and in compliance with federal and state regulations.

### ***De-rating Line 1600***

SDG&E's Line 1600 is an existing approximately 50-mile-long natural gas transmission pipeline constructed in 1949 that begins at the existing Rainbow Metering Station and terminates in Mission Valley, San Diego. The applicants propose to de-rate, or lower the pressure of, approximately 45 miles of existing Line 1600 to convert it from a transmission pipeline into a distribution line. This conversion would require system modifications at various locations along existing Line 1600, including:

- Removal of eight existing regulator stations that would not be replaced;

---

<sup>1</sup> If approved as proposed, the new pipeline would terminate within MCAS Miramar. One or more off-base alternatives will also be considered as described in sections B and E of this NOP.

- Removal of two existing regulator stations that would be replaced with check valves;
- Removal of one existing regulator station that would be replaced with a new regulator station;
- Construction of three new regulator stations and connection pipelines;
- Construction of the Mira Mesa Pipeline Extension (0.88-mile-long, 8-inch-diameter pipe) to maintain the high-pressure distribution system for the community of Mira Mesa;
- Line 49-31B Replacement – In-place replacement of an existing 0.70-mile-long segment of 4-inch-diameter pipe along Line 49-31B with a 6-inch-diameter pipe to maintain service to the Mira Mesa high-pressure distribution system; and
- Line 49-31C Prelay Segment Replacement – Installation of 1.08 miles of 8-inch-diameter pipe in a segment in Pomerado Road.

**Location of the Project**

The proposed project would be located in San Diego County, California, and cross the cities of Escondido, San Diego, and Poway; unincorporated communities in San Diego County; and federal land (MCAS Miramar). Approximately 87 percent (approximately 41 miles) of the proposed pipeline would be installed in urban areas within existing roadways and road shoulders; the majority of the new pipeline would generally follow the alignments of U.S. Route 395, Interstate 15, and Pomerado Road. The remaining 6 miles would be installed cross-country on federal and privately owned land. The proposed project facilities are illustrated on Figure 1.

**D. Analysis of Potential Environmental Effects**

In accordance with the CEQA Guidelines (Cal. Code. Regs., tit. 14, §§ 15000), the CPUC intends to prepare an EIR to identify and evaluate potential environmental effects of the PSRP and identify mitigation measures to reduce any significant effects identified. The EIR will identify feasible alternatives, compare environmental impacts of the alternatives to the proposed project, and evaluate mitigation to reduce the effects of those alternatives.

Based on preliminary analysis of the proposed project and review of documents submitted by SDG&E and SoCalGas, construction and operation of the proposed project may have a number of environmental effects. Potential issues and significant environmental impacts on the existing environment include those listed in Table 1.

**Table 1 Potentially Significant Environmental Impacts**

Environmental Issue Area	Potential Issues or Impacts
Air Quality	<ul style="list-style-type: none"> <li>• Temporary conflicts with applicable air quality plans</li> <li>• Temporary contributions to air quality standard violations</li> </ul>

**Table 1 Potentially Significant Environmental Impacts**

Environmental Issue Area	Potential Issues or Impacts
	<ul style="list-style-type: none"> <li>• Temporary increases in criteria pollutant concentrations above established thresholds</li> </ul>
Biological Resources	<ul style="list-style-type: none"> <li>• Impacts on sensitive species and sensitive species habitat</li> <li>• Impacts on sensitive natural communities</li> <li>• Impacts on wetlands and streams</li> </ul>
Cultural, Paleontological, and Tribal Resources	<ul style="list-style-type: none"> <li>• Impacts on archaeological and historical resources resulting from potential damage during construction</li> <li>• Impacts on unique paleontological resources, site, or geologic feature during construction</li> <li>• Impacts on tribal cultural resources</li> <li>• Temporary disturbance of human remains (if found to be present) during construction</li> </ul>
Greenhouse Gas Emissions	<ul style="list-style-type: none"> <li>• Temporary conflict with an applicable plan, policy, or regulation adopted for the purpose of reducing the emissions of greenhouse gases</li> </ul>
Noise	<ul style="list-style-type: none"> <li>• Temporary noise levels in excess of standards</li> <li>• Substantial temporary or periodic increase in ambient noise levels</li> </ul>
Population and Housing	<ul style="list-style-type: none"> <li>• Temporary population growth in the area as a result of the relocation of approximately 300 construction workers to the proposed project area from outside the county</li> </ul>
Traffic and Transportation	<ul style="list-style-type: none"> <li>• Temporary changes in the flow of traffic based on Level of Service standards</li> <li>• Temporary conflicts with traffic plans or policies during construction within roadways</li> <li>• Temporary increases in hazards during construction within roadways</li> <li>• Temporary interference with emergency access and alternative transportation during construction within roadways</li> </ul>
Other Analysis Areas	
Aesthetics	See Attachment 1
Agriculture and Forestry Resources	See Attachment 1
Geology, Soils, and Mineral Resources	See Attachment 1
Hazardous and Hazardous Materials	See Attachment 1
Hydrology and Water Quality	See Attachment 1
Land Use and Planning	See Attachment 1
Public Services and Utilities	See Attachment 1
Recreation	See Attachment 1
Cumulative Impacts and Growth Inducing Impacts	<ul style="list-style-type: none"> <li>• Any changes in the pattern of land use, population density, or economic growth rate in the area as a result of the proposed project or</li> </ul>

**Table 1 Potentially Significant Environmental Impacts**

Environmental Issue Area	Potential Issues or Impacts
	impacts from the removal of barriers to development or the extension of infrastructure to a previous unserved or under-served area <ul style="list-style-type: none"> <li>• Collective impacts of the proposed project when combined with other past, present, or reasonably foreseeable future actions</li> </ul>

Determinations regarding the significance of these potential impacts will be made in the environmental analysis conducted as part of the EIR after the issues are thoroughly considered. To assist the public’s understanding of the range of impacts that could be considered in the EIR, and to provide a guide for scoping comments, a checklist of CEQA questions typically evaluated in an EIR are included as Attachment 1. In addition to the issues listed in Attachment 1 and any other issues raised in the scoping process, the EIR will include an evaluation of cumulative impacts and growth-inducing impacts of the proposed project in combination with other past, present, and planned projects in the area.

**Mitigation Measures**

SDG&E and SoCalGas have proposed measures to reduce, avoid, or eliminate potential environmental impacts of the proposed project (called “Applicant Proposed Measures,” or “APMs”). The APMs will be evaluated in the EIR as potential mitigation measures, and additional mitigation measures will also be identified and considered to reduce, eliminate, or avoid potential environmental impacts, as necessary. As part of its decision on the proposed project, the CPUC will identify the mitigation measures to be adopted as a condition of the project’s approval and require implementation of these measures through a mitigation monitoring and reporting program.

**E. Alternatives**

In addition to the analysis of potential effects for the proposed PSRP, the EIR will evaluate a reasonable range of alternatives to the PSRP that could achieve all or most of the objectives of the proposed project, while avoiding or reducing one or more of its significant environmental impacts. Alternatives will include a “no project” alternative.

In the PEA for the PSRP, SDG&E and SoCalGas evaluated a variety of project alternatives, including not constructing a new pipeline, constructing a new pipeline in other areas of the service territory, multiple routes in the general vicinity of the existing Line 1600, co-locating a new pipeline near other existing infrastructure, and route variations. Alternatives and route variations evaluated by SDG&E and SoCalGas are depicted on Figures 5-1 and 5-2.

As part of the environmental review process for the PSRP, the CPUC will re-evaluate the feasibility of SDG&E and SoCalGas’s alternatives and determine whether or not to carry them forward for further analysis in the EIR. The CPUC may develop additional alternatives for consideration and analysis based on input received during the scoping period or in response to potentially significant environmental impacts identified during development of the EIR.

Agencies and the public will be given the opportunity to comment on the project alternatives considered following publication of the Draft EIR. A Notice of Availability will be issued at the time of the publication of the Draft EIR to inform the public and agencies that the comment period for the Draft EIR has been initiated.

## F. Public Scoping Meetings and Comments

As required by CEQA, this NOP is being sent to potential responsible and trustee agencies under CEQA, interested parties, and members of the public. The purpose of the NOP is to inform recipients that the CPUC is beginning the preparation of an EIR for the proposed project and to solicit information that will be helpful in the environmental review process.

### *Public Scoping Meetings*

The CPUC is conducting six public scoping meetings on three dates during the EIR scoping period (see Table 2). All interested parties, including the public, responsible agencies, and trustee agencies, are invited to attend the public scoping meetings to learn more about the proposed project, ask questions, and provide comments in person about the PSRP and the scope and content of the EIR. The CPUC will also present information about the proposed project and its decision-making process at each meeting.

**Table 2 Public Scoping Meetings**

Tuesday, May 23, 2017*	Wednesday, May 24, 2017*	Thursday, May 25, 2017*
2 PM – 4 PM 6 PM – 8 PM	2 PM – 4 PM 6 PM – 8 PM	2 PM – 4 PM 6 PM – 8 PM
Pala Mesa Resort, Ballroom	Park Avenue Community Center, Auditorium	Alliant International University – San Diego Campus, Green Hall
2001 Old Highway 395 Fallbrook, CA 92028	210 E. Park Avenue Escondido, CA 92025	10455 Pomerado Road San Diego, CA 92131

\*Presentations will be held each day at 2:30 PM and 6:30 PM.

### *Agency and Public Scoping Comments*

The CPUC is soliciting comments from all potential responsible and trustee agencies, all other public agencies with jurisdiction by law over the proposed project, and members of the public regarding the topics and alternatives that should be included in the EIR. **The scoping period will begin on May 9, 2017, and end on June 12, 2017.**

Interested parties may submit comments in a variety of ways: (1) by submitting a comment online at the CPUC’s PSRP website; (2) by email; (3) by U.S. mail; and (4) by making a verbal statement to a court reporter or handing in a written comment at the public scoping meetings (see times and locations in Table 2, above). All posted and emailed comments should include the

commenter’s name and mailing address at the bottom of the comment and note the “Pipeline Safety and Reliability Project.”

**Online:** Submit comments via an online form at: <http://sandiegopipeline-psrp.com>

**By email:** Email comments to: [SDgaspipeline@ene.com](mailto:SDgaspipeline@ene.com)

**By U.S. mail:** Mail hard copy comments to:

Robert Peterson  
California Public Utilities Commission  
RE: Pipeline Safety and Reliability Project  
c/o Ecology and Environment, Inc.  
505 Sansome Street, Suite 300  
San Francisco, CA 94111

**Comments must be received, or postmarked if hardcopy, by June 12, 2017.** Interested parties will have an additional opportunity to comment during the public review period for the Draft EIR.

All comments received during scoping, including the names and addresses of those who comment, will be made part of the public record for the proposed project. Comments submitted anonymously will be accepted and considered; however, anonymous comments will not provide CPUC with the ability to provide the commenter with subsequent notifications related to the environmental review process for the proposed project.

A Public Scoping Summary Report will be prepared to summarize comments (including verbal comments made at the public scoping meetings) submitted to the CPUC during the scoping period. This report will be available on the CPUC PSRP website: <http://sandiegopipeline-psrp.com>.

### **Additional Information**

Information about the proposed project and the environmental review process is available at the following website: <http://sandiegopipeline-psrp.com>.

This website will be used to post all public documents during the environmental review process and to announce upcoming public meetings. Requests to join the mailing list can be made via the website, as well. In addition, a copy of the applicants’ PEA and Supplemental PEA is available at this website, and the Draft and Final EIR will be posted to this website after they are published.

Requests for additional information may be made via email or phone, as follows.

Project email: [SDgaspipeline@ene.com](mailto:SDgaspipeline@ene.com)

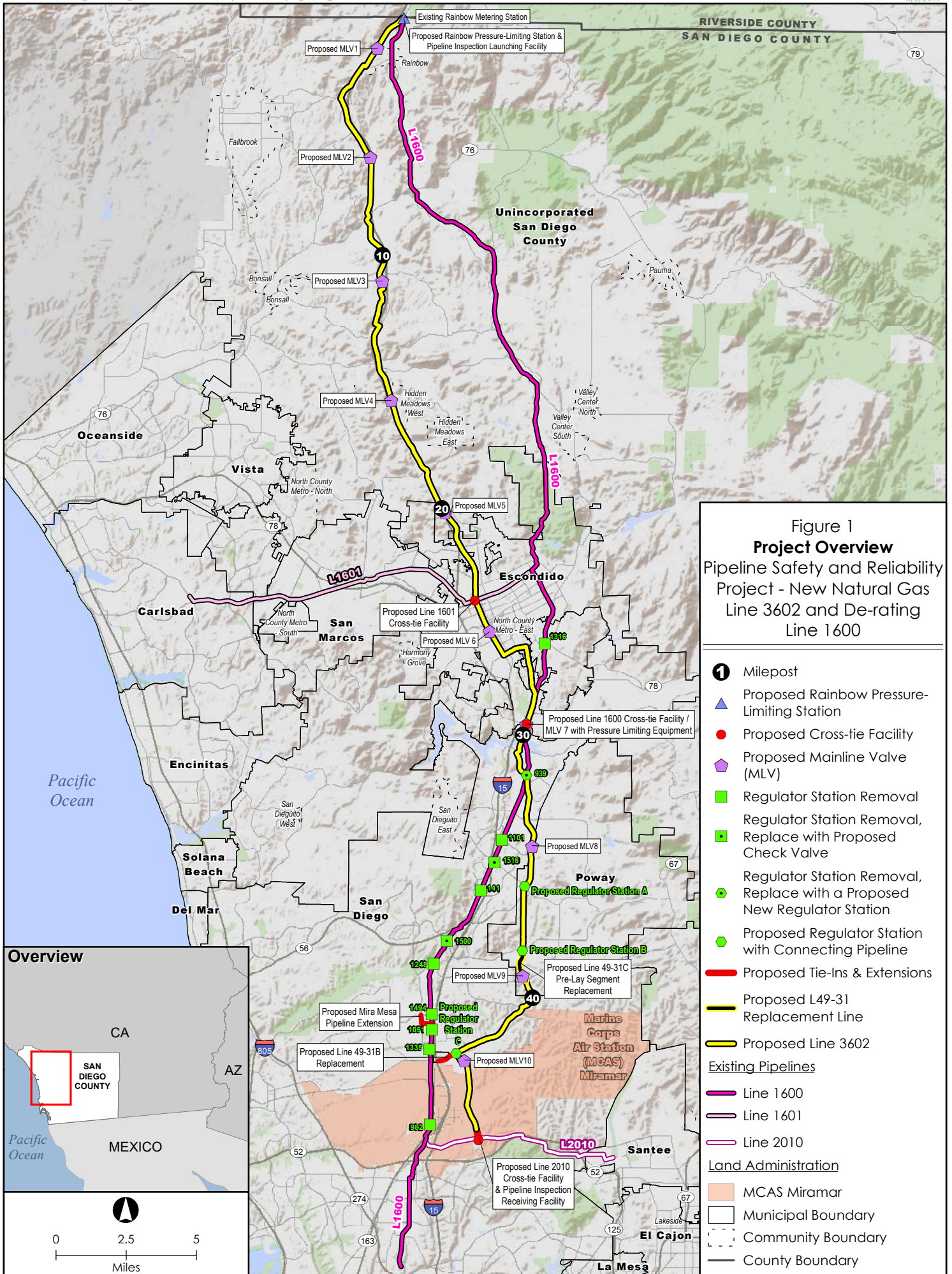
Project voicemail: 1-844-312-4776 (toll free)

This NOP and the Draft and Final EIR will be made available at the locations listed in Table 3:



**Table 3 Project Document Repository Locations**

Repository	Address	Phone
Temecula Public Library	30600 Pauba Road Temecula, CA 92592	(951) 693-8900
Fallbrook Public Library	124 S. Mission Road Fallbrook, CA 92028	(760) 731-4650
Valley Center Branch Library	29200 Cole Grade Road Valley Center, CA 92082	(760) 749-1305
Vista Branch Library	700 Eucalyptus Ave. Vista, CA 92084	(760) 643-5100
San Marcos Branch Library	2 Civic Center Drive San Marcos, CA 92069	(760) 891-3000
Escondido Public Library	239 S. Kalmia St. Escondido, CA 92025	(760) 839-4684
Rancho Bernardo Branch Library	17110 Bernardo Center Drive San Diego, CA 92128	(858) 538-8163
4S Ranch Branch Library	10433 Reserve Drive San Diego, CA 92127	(858) 673-4697
Carmel Mountain Ranch Branch Library	12095 World Trade Drive San Diego, CA 92128	(858) 538-8181
Rancho Penasquitos Branch Library	13330 Salmon River Road San Diego, CA 92129	(858) 538-8159
Poway Branch Library	13137 Poway Road Poway, CA 92064	(858) 513-2900
Mira Mesa Branch Library	8405 New Salem St. San Diego, CA 92126	(858) 538-8165
Scripps Miramar Ranch Branch Library	10301 Scripps Lake Drive San Diego, CA 92131	(858) 538-8158
Tierrasanta Branch Library	4985 La Cuenta Drive San Diego, CA 92124	(858) 573-1384



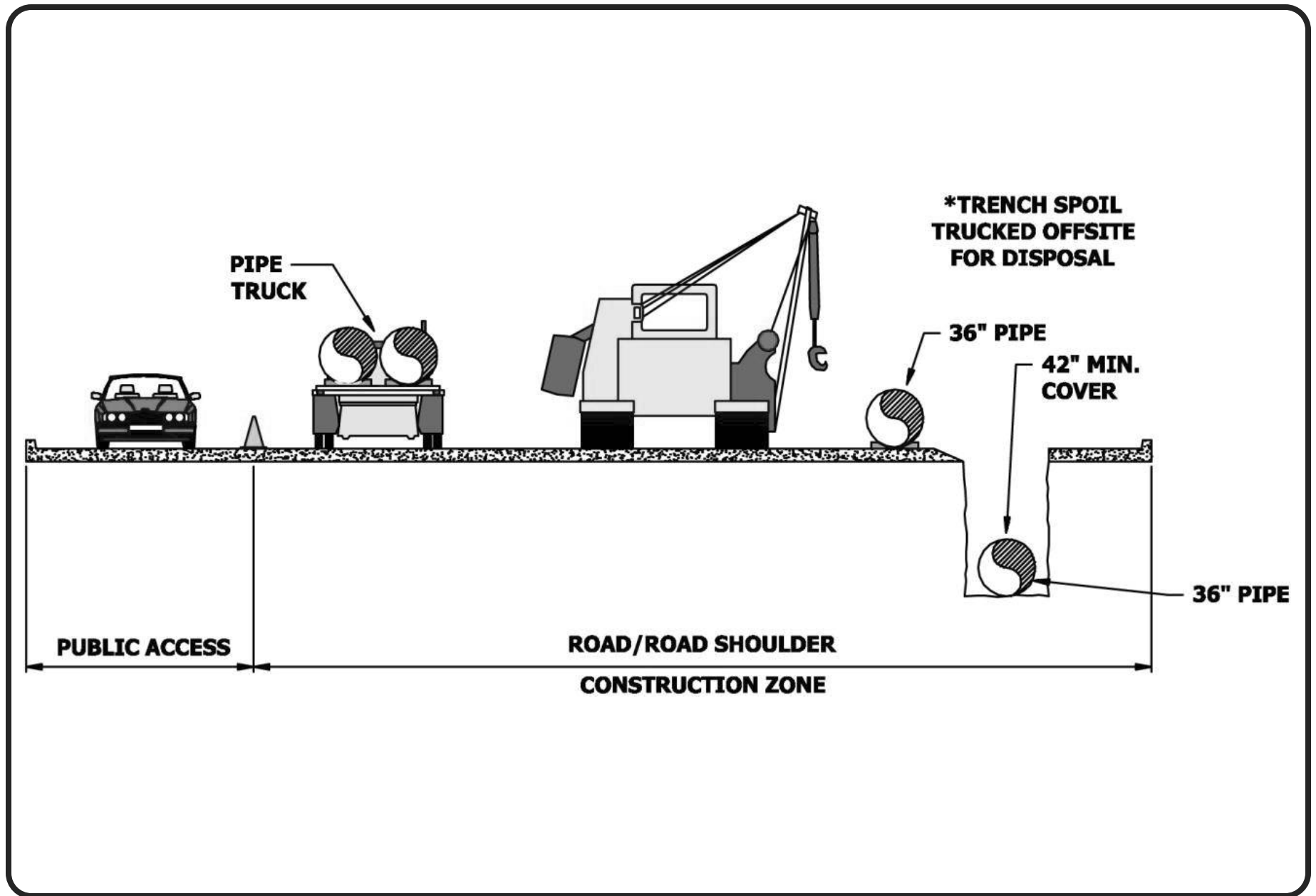


Figure 2: Typical Urban ROW Cross-Section

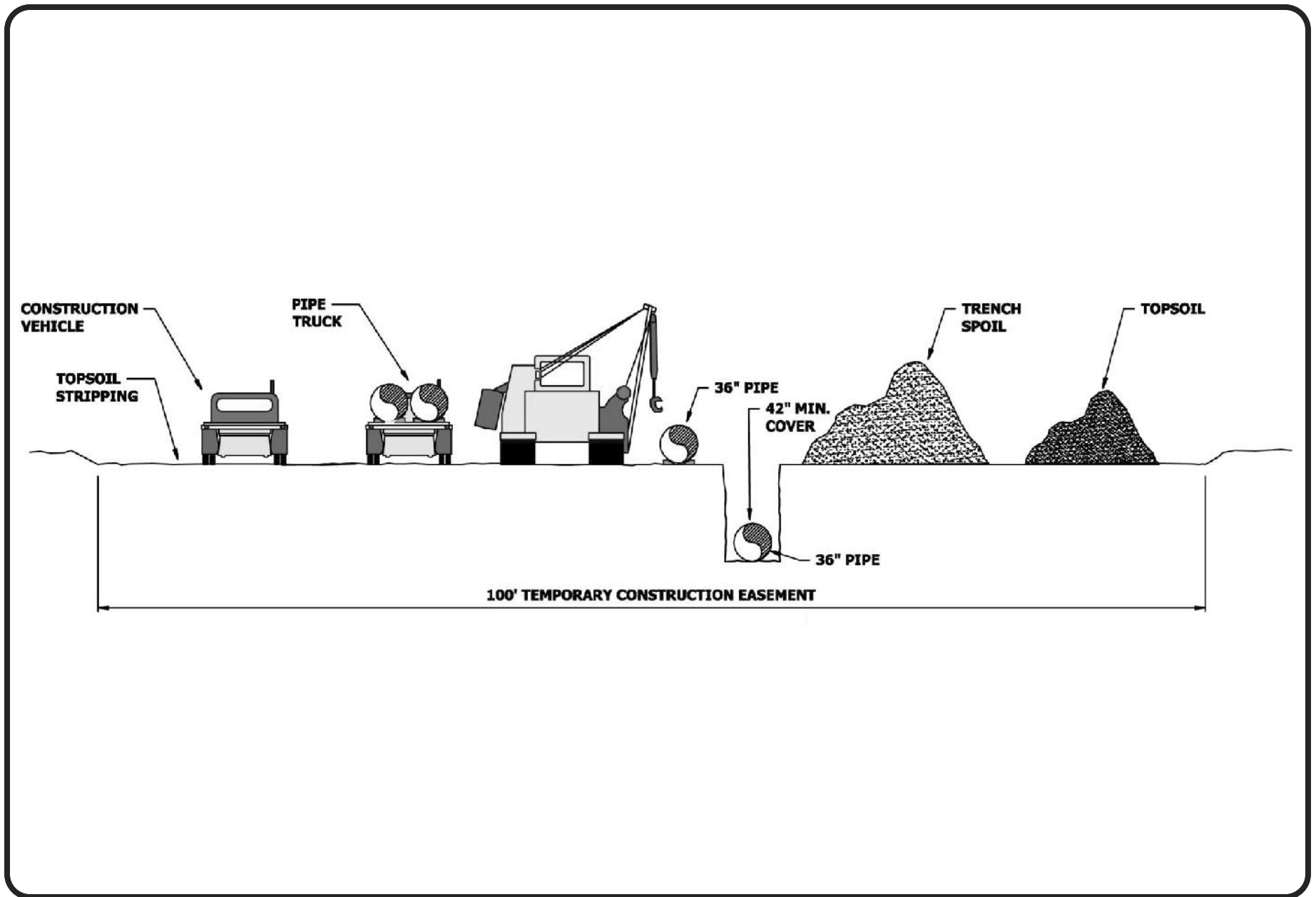


Figure 3: Typical Cross-Country ROW Cross-Section

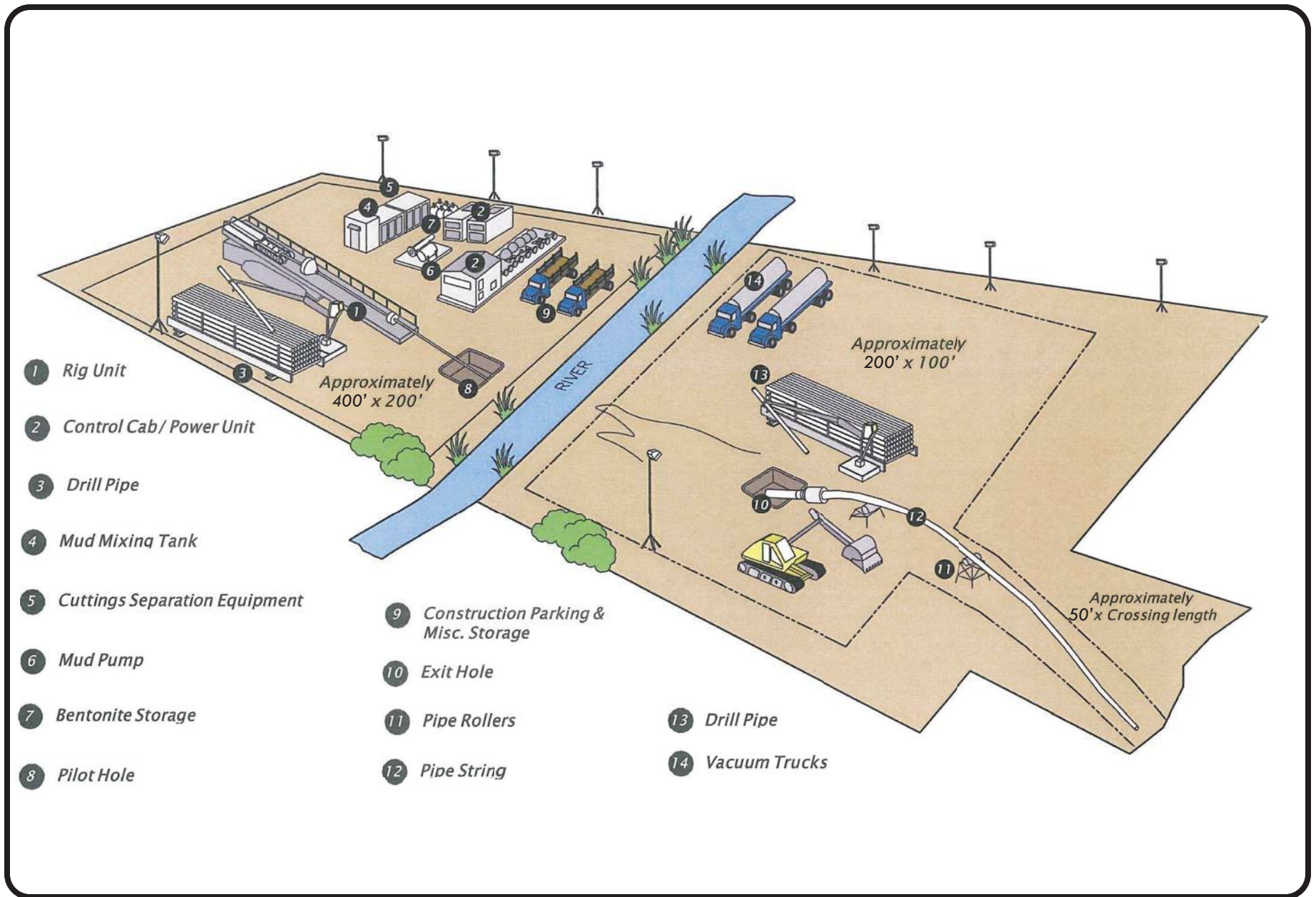
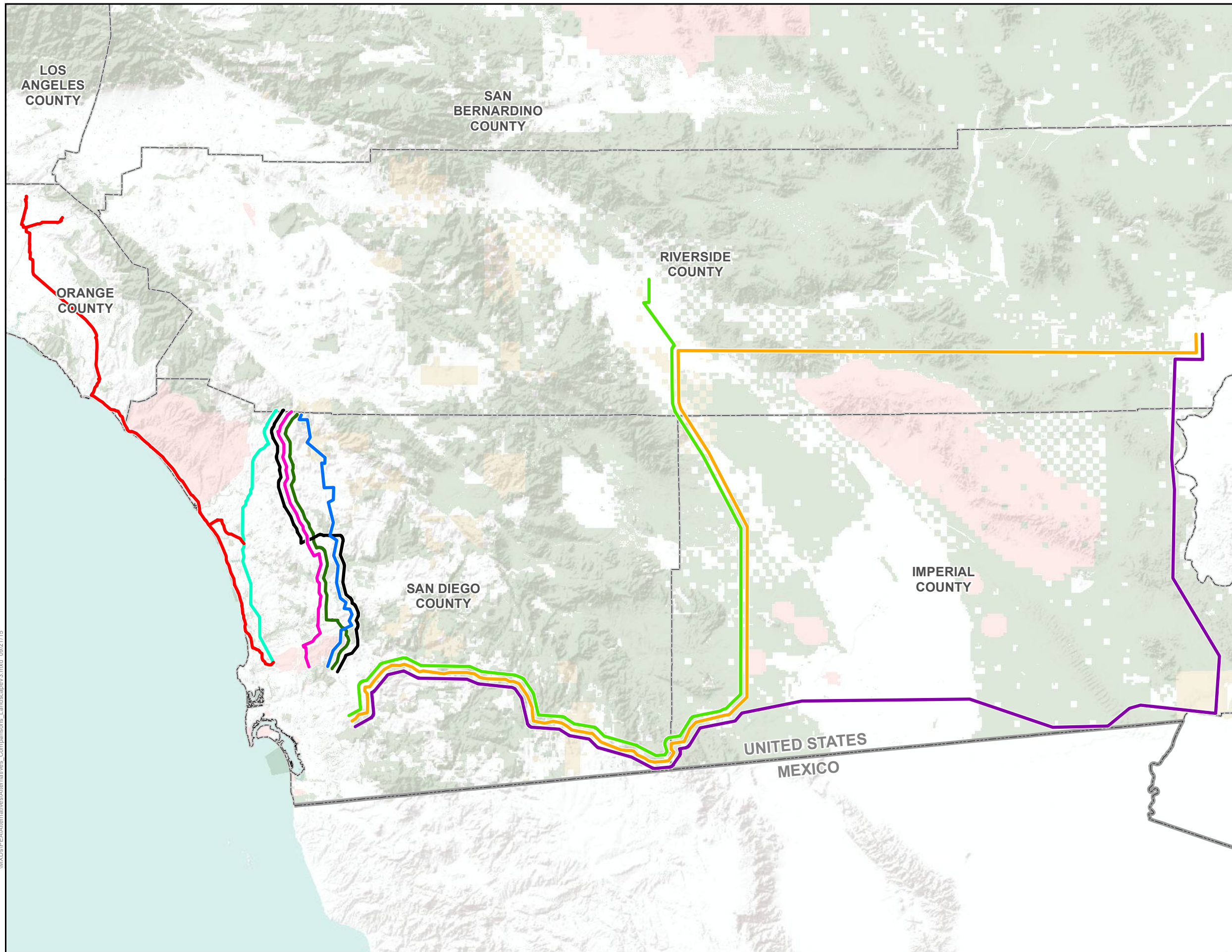


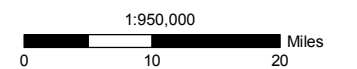
Figure 4: Typical Horizontal Directional Drill

Figure 5-1: Alternatives Map

Pipeline Safety & Reliability Project



- Proposed Project
- Valley Center Alternative
- Rainbow – El Norte Parkway – Santee Alternative
- Rainbow to Santee Non-Miramar Alternative
- Cactus City to San Diego Alternative
- South Orange County Coastal Alternative
- Blythe to Santee Alternative 1
- Blythe to Santee Alternative 2
- Second Pipeline along Line 3010
- County Boundary
- Country Boundary
- Land Administration**
- Parks
- Military
- Bureau of Indian Affairs



Source: SDG&E; Insignia, 2015

MXDs\PEA\Alternatives\Comparisons\_Landscape\3.mxd 09/21/15

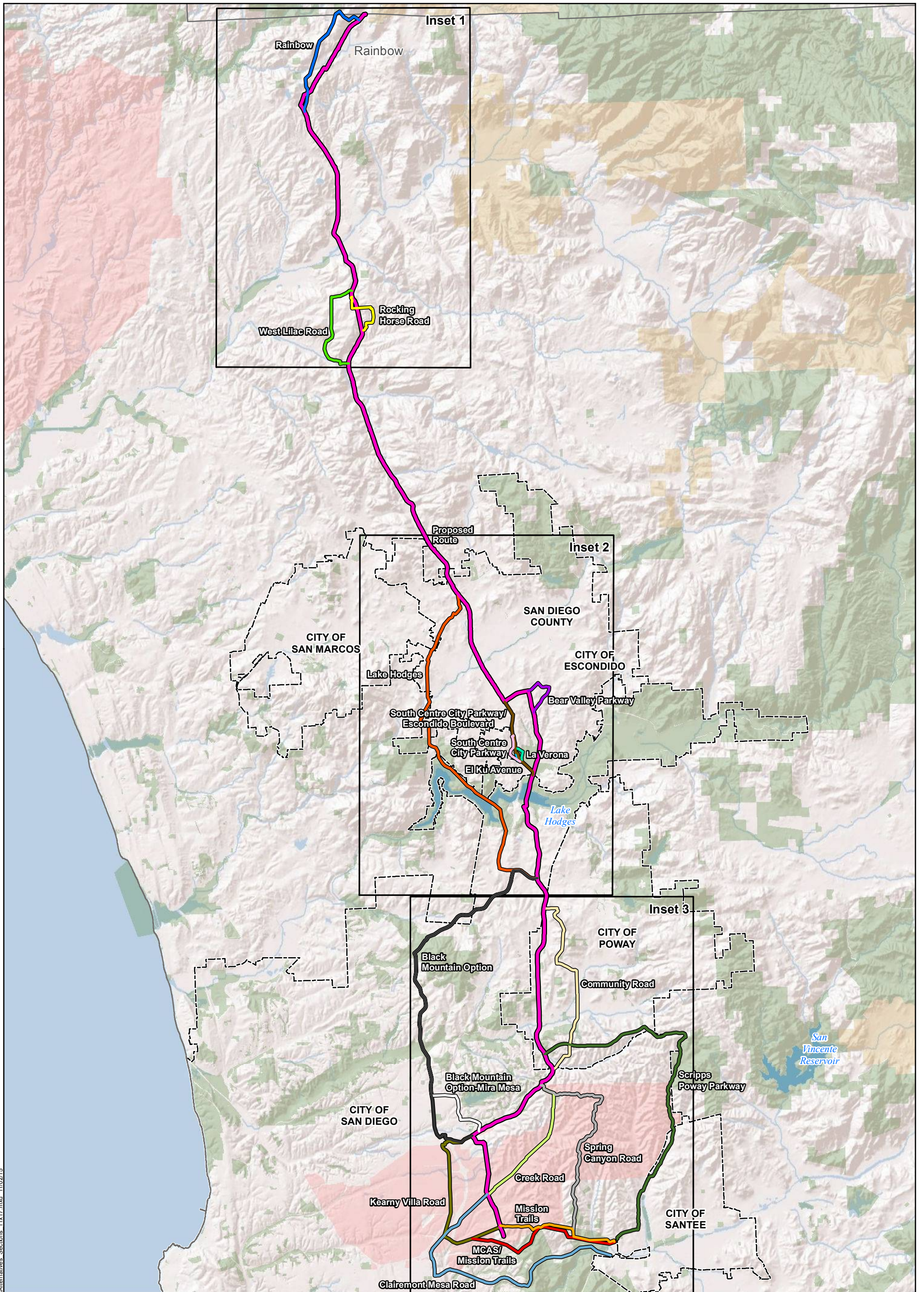
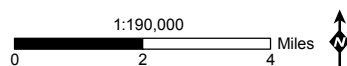


Figure 5-2: Proposed Project Route Segment Alternatives - Overview Map

Pipeline Safety & Reliability Project

- |                     |   |                       |                                 |                          |
|---------------------|---|-----------------------|---------------------------------|--------------------------|
| Proposed Route      | South Centre City Parkway/Escondido Boulevard | Community Road        | Mission Trails                  | City/County Boundary     |
| Rainbow             | South Centre City Parkway                     | Scripps Poway Parkway | MCAS/Mission Trails             | Parks                    |
| Rocking Horse Road  | La Verona                                     | Spring Canyon Road    | Clairemont Mesa Road            | Military                 |
| West Lilac Road     | Lake Hodges                                   | Creek Road            | Black Mountain Option-Mira Mesa | Bureau of Indian Affairs |
| Bear Valley Parkway | El Ku Avenue                                  | Kearny Villa Road     | Black Mountain Option           |                          |



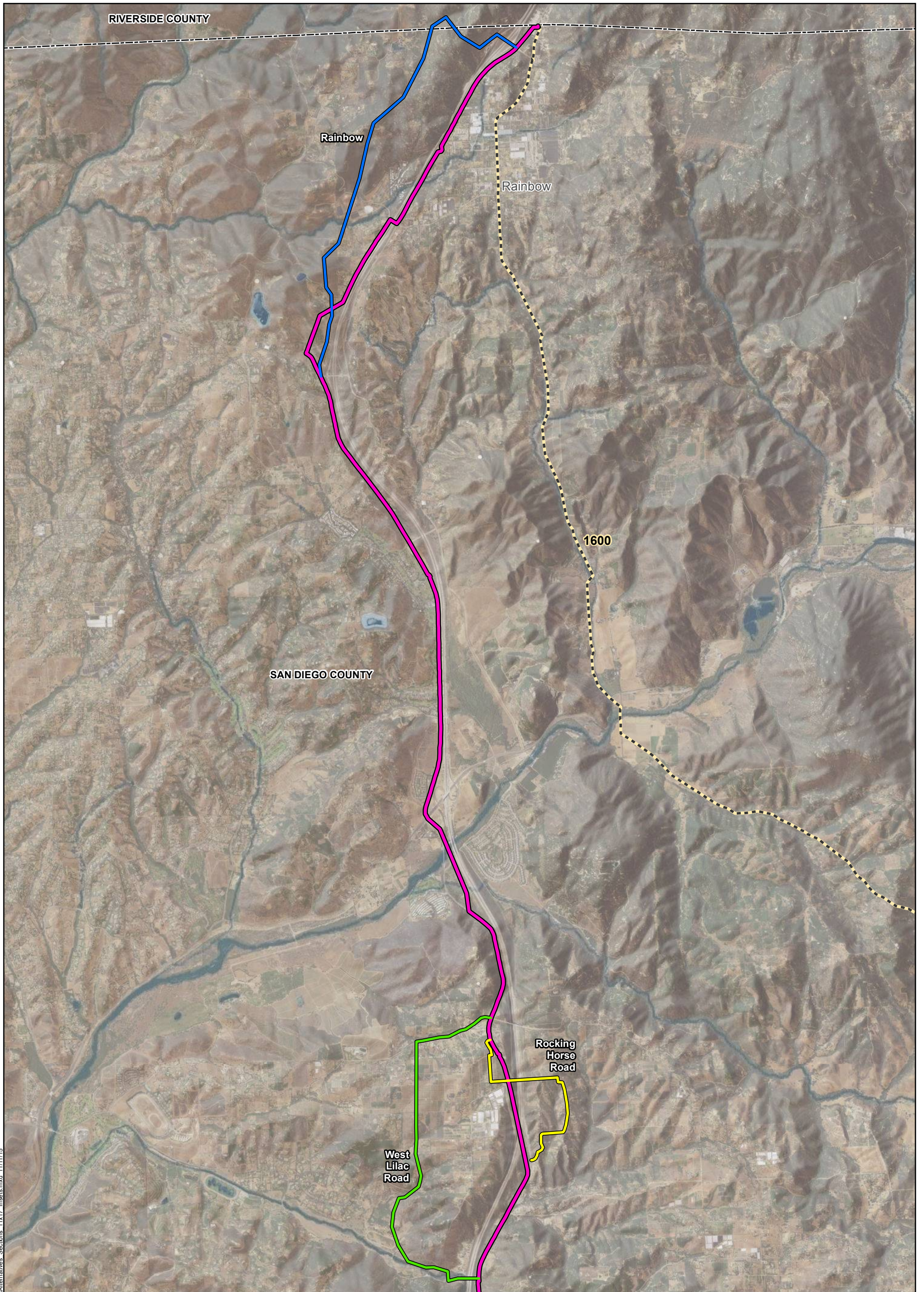
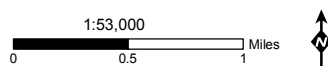


Figure 5-2: Proposed Project Route Segment Alternatives - Inset Map 1 of 3

Pipeline Safety & Reliability Project

- |                     |   |                       |                                 |                            |
|---------------------|---|-----------------------|---------------------------------|----------------------------|
| Proposed Route      | South Centre City Parkway/Escondido Boulevard | Community Road        | Mission Trails                  | Existing Transmission Line |
| Rainbow             | South Centre City Parkway                     | Scripps Poway Parkway | MCAS/Mission Trails             | City/County Boundary       |
| Rocking Horse Road  | La Verona                                     | Spring Canyon Road    | Clairemont Mesa Road            |                            |
| West Lilac Road     | Lake Hodges                                   | Creek Road            | Black Mountain Option-Mira Mesa |                            |
| Bear Valley Parkway | El Ku Avenue                                  | Kearny Villa Road     | Black Mountain Option           |                            |





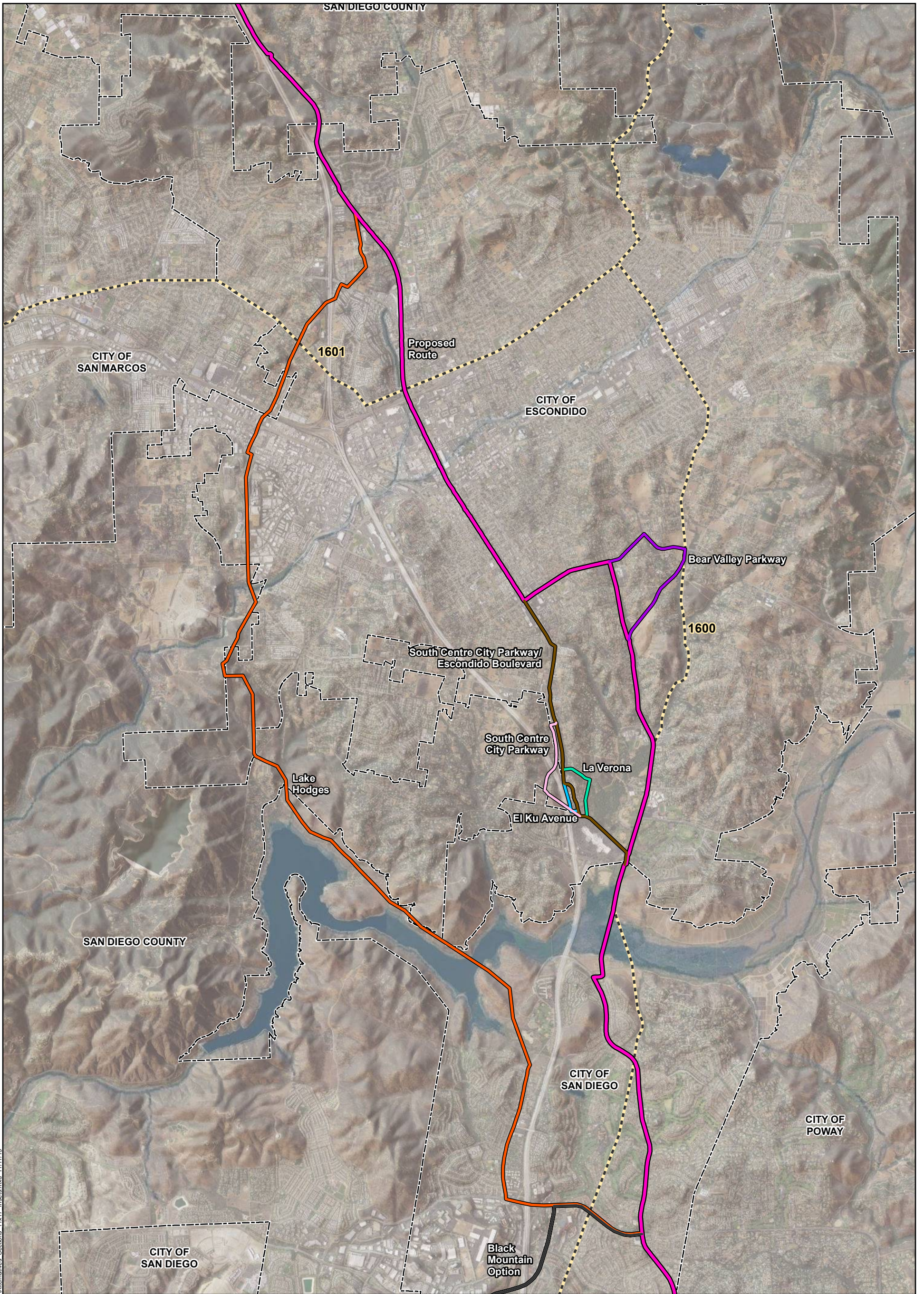
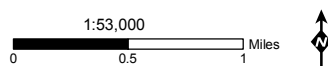


Figure 5-2: Proposed Project Route Segment Alternatives - Inset Map 2 of 3

Pipeline Safety & Reliability Project

- |                     |   |                       |                                 |                            |
|---------------------|---|-----------------------|---------------------------------|----------------------------|
| Proposed Route      | South Centre City Parkway/Escondido Boulevard | Community Road        | Mission Trails                  | Existing Transmission Line |
| Rainbow             | South Centre City Parkway                     | Scripps Poway Parkway | MCAS/Mission Trails             | City/County Boundary       |
| Rocking Horse Road  | La Verona                                     | Spring Canyon Road    | Clairemont Mesa Road            |                            |
| West Lilac Road     | Lake Hodges                                   | Creek Road            | Black Mountain Option-Mira Mesa |                            |
| Bear Valley Parkway | El Ku Avenue                                  | Kearny Villa Road     | Black Mountain Option           |                            |



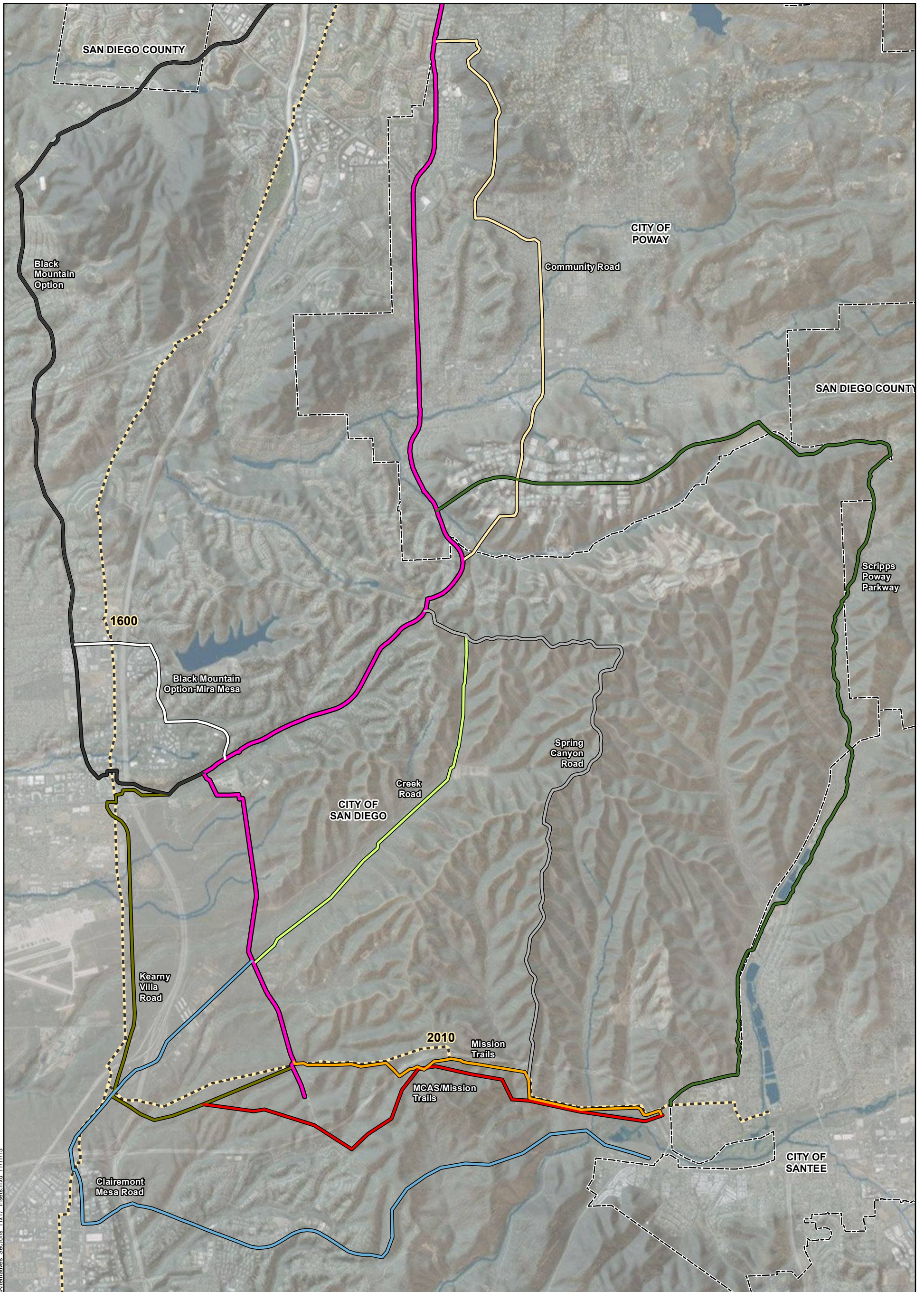
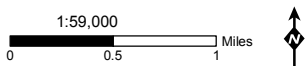


Figure 5-2: Proposed Project Route Segment Alternatives - Inset Map 3 of 3

Pipeline Safety & Reliability Project

- |                     |   |                       |                                 |                            |
|---------------------|---|-----------------------|---------------------------------|----------------------------|
| Proposed Route      | South Centre City Parkway/Escondido Boulevard | Community Road        | Mission Trails                  | Existing Transmission Line |
| Rainbow             | South Centre City Parkway                     | Scripps Poway Parkway | MCAS/Mission Trails             | City/County Boundary       |
| Rocking Horse Road  | La Verona                                     | Spring Canyon Road    | Clairemont Mesa Road            |                            |
| West Lilac Road     | Lake Hodges                                   | Creek Road            | Black Mountain Option-Mira Mesa |                            |
| Bear Valley Parkway | El Ku Avenue                                  | Kearny Villa Road     | Black Mountain Option           |                            |



## **Attachment 1 – CEQA Appendix G**

# Impact Topics

- Based on CEQA Handbook Appendix G: Environmental Checklist Form 2017

<b><i>Aesthetics Impacts</i></b>
Would the project:
a) Have a substantial adverse effect on a scenic vista?
b) Substantially damage scenic resources, including, but not limited to, trees, rock outcroppings, and historic buildings within a state scenic highway?
c) Substantially degrade the existing visual character or quality of the site and its surroundings?
d) Create a new source of substantial light or glare which would adversely affect day or nighttime views in the area?
<b><i>Agriculture and Forestry Resources Impacts</i></b>
In determining whether impacts to agricultural resources are significant environmental effects, lead agencies may refer to the California Agricultural Land Evaluation and Site Assessment Model (1997) prepared by the California Dept. of Conservation as an optional model to use in assessing impacts on agriculture and farmland. In determining whether impacts to forest resources, including timberland, are significant environmental effects, lead agencies may refer to information compiled by the California Department of Forestry and Fire Protection regarding the state's inventory of forest land, including the Forest and Range Assessment Project and the Forest Legacy Assessment project; and forest carbon measurement methodology provided in Forest Protocols adopted by the California Air Resources Board.
Would the project:
a) Convert Prime Farmland, Unique Farmland, or Farmland of Statewide Importance (Farmland), as shown on the maps prepared pursuant to the Farmland Mapping and Monitoring Program of the California Resources Agency, to non-agricultural use?
b) Conflict with existing zoning for agricultural use, or a Williamson Act contract?
c) Conflict with existing zoning for, or cause rezoning of, forest land (as defined in Public Resources Code section 12220(g)), timberland (as defined by Public Resources Code Section 4526), or timberland zoned Timberland Production (as defined by Government Code section 51104(g))?
d) Result in the loss of forest land or conversion of forest land to non-forest use?
e) Involve other changes in the existing environment which, due to their location or nature, could result in conversion of Farmland to non-agricultural use or conversion of forest land to non-forest use?
<b><i>Air Quality Impacts</i></b>
Where available, the significance criteria established by the applicable air quality management or air pollution control district may be relied upon to make the following determinations. Would the project:
a) Conflict with or obstruct implementation of the applicable air quality plan?
b) Violate any air quality standard or contribute substantially to an existing or projected air quality violation?
c) Result in a cumulatively considerable net increase of any criteria pollutant for which the project region is in non-attainment under an applicable federal or state ambient air quality standard (including releasing emissions which exceed quantitative thresholds for ozone precursors)?

**PIPELINE SAFETY AND RELIABILITY PROJECT – NEW NATURAL GAS LINE 3602  
AND DE-RATING LINE 1600 (PSRP)**

MAY 9, 2017

d) Expose sensitive receptors to substantial pollutant concentrations?
e) Create objectionable odors affecting a substantial number of people?
<b><i>Biological Resources Impacts</i></b>
Would the project:
a) Have a substantial adverse effect, either directly or through habitat modifications, on any species identified as a candidate, sensitive, or special status species in local or regional plans, policies, or regulations, or by the California Department of Fish and Game or U.S. Fish and Wildlife Service?
b) Have a substantial adverse effect on any riparian habitat or other sensitive natural community identified in local or regional plans, policies, regulations or by the California Department of Fish and Game or US Fish and Wildlife Service?
c) Have a substantial adverse effect on federally protected wetlands as defined by Section 404 of the Clean Water Act (including, but not limited to, marsh, vernal pool, coastal, etc.) through direct removal, filling, hydrological interruption, or other means?
d) Interfere substantially with the movement of any native resident or migratory fish or wildlife species or with established native resident or migratory wildlife corridors, or impede the use of native wildlife nursery sites?
e) Conflict with any local policies or ordinances protecting biological resources, such as a tree preservation policy or ordinance?
f) Conflict with the provisions of an adopted Habitat Conservation Plan, Natural Community Conservation Plan, or other approved local, regional, or state habitat conservation plan?
<b><i>Cultural, Paleontological, and Tribal Resources Impacts</i></b>
Would the project:
a) Cause a substantial adverse change in the significance of a historical resource as defined in § 15064.5?
b) Cause a substantial adverse change in the significance an archaeological resource pursuant to §15064.5?
c) Directly or indirectly destroy a unique paleontological resource or site or unique geologic feature?
d) Disturb any human remains, including those interred outside of formal cemeteries?
e) Cause a substantial adverse change in the significance of a tribal cultural resource, defined in Public Resources Code section 21074 as either a site, feature, place, cultural landscape that is geographically defined in terms of the size and scope of the landscape, sacred place, or object with cultural value to a California Native American tribe, and that is:
i. Listed or eligible for listing in the California Register of Historical Resources, or in a local register of historical resources as defined in Public Resources Code section 5020.1(k), or
ii. A resource determined by the lead agency, in its discretion and supported by substantial evidence, to be significant pursuant to criteria set forth in subdivision (c) of Public Resources Code Section 5024.1. In applying the criteria set forth in subdivision (c) of Public Resources Code Section 5024.1, the lead agency shall consider the significance of the resource to a California Native American tribe.

**PIPELINE SAFETY AND RELIABILITY PROJECT – NEW NATURAL GAS LINE 3602  
AND DE-RATING LINE 1600 (PSRP)**

MAY 9, 2017

<b><i>Geology, Soils, and Mineral Resources Impacts</i></b>
Would the project:
a) Expose people or structures to potential substantial adverse effects, including the risk of loss, injury, or death involving:
i) Rupture of a known fault, as delineated on the most recent Alquist-Priolo Earthquake Fault Zoning Map issued by the State Geologist for the area or based on other substantial evidence of a known fault? Refer to Division of Mines and Geology Special Publication 42.
ii) Strong seismic ground shaking?
iii) Seismic-related ground failure, including liquefaction?
iv) Landslides?
b) Result in substantial soil erosion or the loss of topsoil?
c) Be located on a geologic unit or soil that is unstable, or that would become unstable as a result of the project, and potentially result in on- or off-site landslide, lateral spreading, subsidence, liquefaction or collapse?
d) Be located on expansive soil, as defined in Table 18-1-B of the Uniform Building Code (1994), creating substantial risks to life or property?
e) Have soils incapable of adequately supporting the use of septic tanks or alternative wastewater disposal systems where sewers are not available for the disposal of waste water?
f) Result in the loss of availability of a known mineral resource that would be of value to the region and the residents of the state?
g) Result in the loss of availability of a locally-important mineral resource recovery site delineated on a local general plan, specific plan, or other land use plan?
<b><i>Greenhouse Gas Emissions Impacts</i></b>
Would the project:
a) Generate greenhouse gas emissions, either directly or indirectly, that may have a significant impact on the environment?
b) Conflict with an applicable plan, policy, or regulation adopted for the purpose of reducing the emissions of greenhouse gases?
<b><i>Hazards and Hazardous Materials Impacts</i></b>
Would the project:
a) Create a significant hazard to the public or the environment through the routine transport, use, or disposal of hazardous materials?
b) Create a significant hazard to the public or the environment through reasonably foreseeable upset and accident conditions involving the release of hazardous materials into the environment?
c) Emit hazardous emissions or handle hazardous or acutely hazardous materials, substances, or waste within one-quarter mile of an existing or proposed school?
d) Be located on a site which is included on a list of hazardous materials sites compiled pursuant to Government Code Section 65962.5 and, as a result, would it create a significant hazard to the public or the environment?

**PIPELINE SAFETY AND RELIABILITY PROJECT – NEW NATURAL GAS LINE 3602  
AND DE-RATING LINE 1600 (PSRP)**

**MAY 9, 2017**

e) For a project located within an airport land use plan or, where such a plan has not been adopted, within two miles of a public airport or public use airport, would the project result in a safety hazard for people residing or working in the project area?
f) For a project within the vicinity of a private airstrip, would the project result in a safety hazard for people residing or working in the project area?
g) Impair implementation of or physically interfere with an adopted emergency response plan or emergency evacuation plan?
h) Expose people or structures to a significant risk of loss, injury, or death involving wildland fires, including where wildlands are adjacent to urbanized areas or where residences are intermixed with wildlands?
<b><i>Hydrology and Water Quality Impacts</i></b>
Would the project:
a) Violate any water quality standards or waste discharge requirements?
b) Substantially deplete groundwater supplies or interfere substantially with groundwater recharge such that there would be a net deficit in aquifer volume or a lowering of the local groundwater table level (e.g., the production rate of pre-existing nearby wells would drop to a level which would not support existing land uses or planned uses for which permits have been granted)?
c) Substantially alter the existing drainage pattern of the site or area, including through the alteration of the course of a stream or river, in a manner which would result in substantial erosion or siltation on- or off-site?
d) Substantially alter the existing drainage pattern of the site or area, including through the alteration of the course of a stream or river, or substantially increase the rate or amount of surface runoff in a manner which would result in flooding on- or off-site?
e) Create or contribute to runoff water which would exceed the capacity of existing or planned stormwater drainage systems or provide substantial additional sources of polluted runoff?
f) Otherwise substantially degrade water quality?
g) Place housing within a 100-year flood hazard area as mapped on a federal Flood Hazard Boundary or Flood Insurance Rate Map or other flood hazard delineation map?
h) Place within a 100-year flood hazard area structures which would impede or redirect flood flows?
i) Expose people or structures to a significant risk of loss, injury or death involving flooding, including flooding as a result of the failure of a levee or dam?
j) Inundation by seiche, tsunami, or mudflow?
<b><i>Land Use and Planning Impacts</i></b>
Would the project:
a) Physically divide an established community?
b) Conflict with any applicable land use plan, policy, or regulation of an agency with jurisdiction over the project (including, but not limited to the general plan, specific plan, local coastal program, or zoning ordinance) adopted for the purpose of avoiding or mitigating an environmental effect?
c) Conflict with any applicable habitat conservation plan or natural community conservation plan?

**PIPELINE SAFETY AND RELIABILITY PROJECT – NEW NATURAL GAS LINE 3602  
AND DE-RATING LINE 1600 (PSRP)**

**MAY 9, 2017**

<b>Noise Impacts</b>
Would the project result in:
a) Exposure of persons to or generation of noise levels in excess of standards established in the local general plan or noise ordinance, or applicable standards of other agencies?
b) Exposure of persons to or generation of excessive groundborne vibration or groundborne noise levels?
c) A substantial permanent increase in ambient noise levels in the project vicinity above levels existing without the project?
d) A substantial temporary or periodic increase in ambient noise levels in the project vicinity above levels existing without the project?
e) For a project located within an airport land use plan or, where such a plan has not been adopted, within two miles of a public airport or public use airport, would the project expose people residing or working in the project area to excessive noise levels?
f) For a project within the vicinity of a private airstrip, would the project expose people residing or working in the project area to excessive noise levels?
<b>Population and Housing Impacts</b>
Would the project:
a) Induce substantial population growth in any area, either directly (for example, by proposing new homes and businesses) or indirectly (for example, through extension of roads or other infrastructure)?
b) Displace substantial numbers of existing housing, necessitating the construction of replacement housing elsewhere?
c) Displace substantial numbers of people, necessitating the construction of replacement housing elsewhere?
<b>Public Services and Utilities Impacts</b>
Would the project:
a) Result in substantial adverse physical impacts associated with the provision of new or physically altered governmental facilities, need for new or physically altered governmental facilities, the construction of which could cause significant environmental impacts, in order to maintain acceptable service ratios, response times or other performance objectives for any of the public services:
i) Fire protection?
ii) Police protection?
iii) Schools?
iv) Parks?
v) Other public facilities?
b) Exceed wastewater treatment requirements of the applicable Regional Water Quality Control Board?
c) Require or result in the construction of new water or wastewater treatment facilities or expansion of existing facilities, the construction of which could cause significant environmental effects?



**PIPELINE SAFETY AND RELIABILITY PROJECT – NEW NATURAL GAS LINE 3602  
AND DE-RATING LINE 1600 (PSRP)**

**MAY 9, 2017**

d) Require or result in the construction of new storm water drainage facilities or expansion of existing facilities, the construction of which could cause significant environmental effects?
e) Have sufficient water supplies available to serve the project from existing entitlements and resources, or require new or expanded entitlements?
f) Result in a determination by the wastewater treatment provider which serves or may serve the project that it has adequate capacity to serve the project’s projected demand in addition to the provider’s existing commitments?
g) Be served by a landfill with sufficient permitted capacity to accommodate the project’s solid waste disposal needs?
h) Comply with federal, state, or local statutes and regulations related to solid waste?
<b><i>Recreation Impacts</i></b>
a) Would the project increase the use of existing neighborhood and regional parks or other recreational facilities such that substantial physical deterioration of the facility would occur or be accelerated?
b) Does the project include recreational facilities or require the construction or expansion of recreational facilities which might have an adverse physical effect on the environment?
<b><i>Traffic and Transportation Impacts</i></b>
Would the project:
a) Conflict with an applicable plan, ordinance or policy establishing measures of effectiveness for the performance of the circulation system, taking into account all modes of transportation including mass transit and non-motorized travel and relevant components of the circulation system, including but not limited to intersections, streets, highways and freeways, pedestrian and bicycle paths, and mass transit?
b) Conflict with an applicable congestion management program, including, but not limited to level of service standards and travel demand measures, or other standards established by the county congestion management agency for designated roads or highways?
c) Result in a change in air traffic patterns, including either an increase in traffic levels or a change in location that results in substantial safety risks?
d) Substantially increase hazards due to a design feature (e.g., sharp curves or dangerous intersections) or incompatible uses (e.g., farm equipment)?
e) Result in inadequate emergency access?
f) Conflict with adopted policies, plans or programs regarding public transit, bicycle, or pedestrian facilities, or otherwise decrease the performance or safety of such facilities?