



Did you know?

This project will help improve service reliability for families in the surrounding communities.



By phone

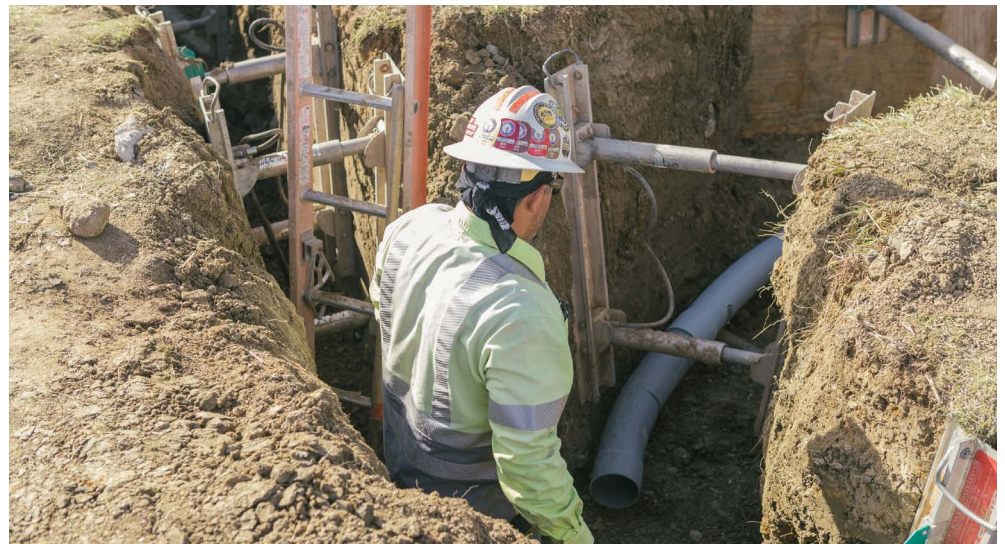
1-844-765-6388



To learn more visit
sdge.com/delmar

Del Mar Reconfiguration Project

Our commitment to providing safe and reliable energy means enhancing our system which includes power line replacement and removal activities.



This Project will help increase system capacity and reliability while also improving safety and aesthetics in surrounding communities by undergrounding existing lines.

Overview

A new one-mile section of transmission line will be installed underground within Via de la Valle Road. Next, Transmission Line 666D will be removed. Around one mile of existing overhead distribution circuits will be converted to underground.

All project components are within SDG&E's existing rights-of-way, property or franchise within the cities of San Diego, Del Mar and Solana Beach.

Project benefits

- Increased reliability and capacity of the electric and transmission distribution system
- Environmental impacts will be reduced in coastal wetlands near and within the an Dieguito Lagoon, Los Penasquitos Lagoon and Torrey Pines State Natural Reserve by removing an existing power line from these areas

About the project

The California Public Utilities Commission (CPUC) granted SDG&E® a permit to construct this project on June 3, 2019.

What to expect

Throughout the project, we'll work as safely and quickly as possible and make every effort to minimize disruptions such as construction traffic, lane/road closures, dust and noise along the affected streets. Our work may require a power shut-off for safety purposes. If so, we'll contact you in advance to ensure you're prepared for a planned outage.

Multiple construction activities may take place simultaneously that could affect traffic and noise levels. Please note, we will adhere to work hours, traffic control measures and noise restrictions as established by local jurisdictions.

Project schedule

Construction began in the first quarter of 2022. Construction will generally occur between 7 a.m. - 7 p.m. Monday through Saturday, unless otherwise required by local permit. Work on Sundays may be required and will be coordinated with the cities of San Diego and Del Mar. *Temporary lane closures and traffic delays are anticipated.*

California Public Utilities Commission Approval: June 2019

Construction Activities: Q1 2022 - Q4 2023

Construction Completion: Q4 2023

Contact information

If you have questions or concerns, please visit [sdge.com/delmar](https://www.sdge.com/delmar) or call 1-844-765-6388.

