



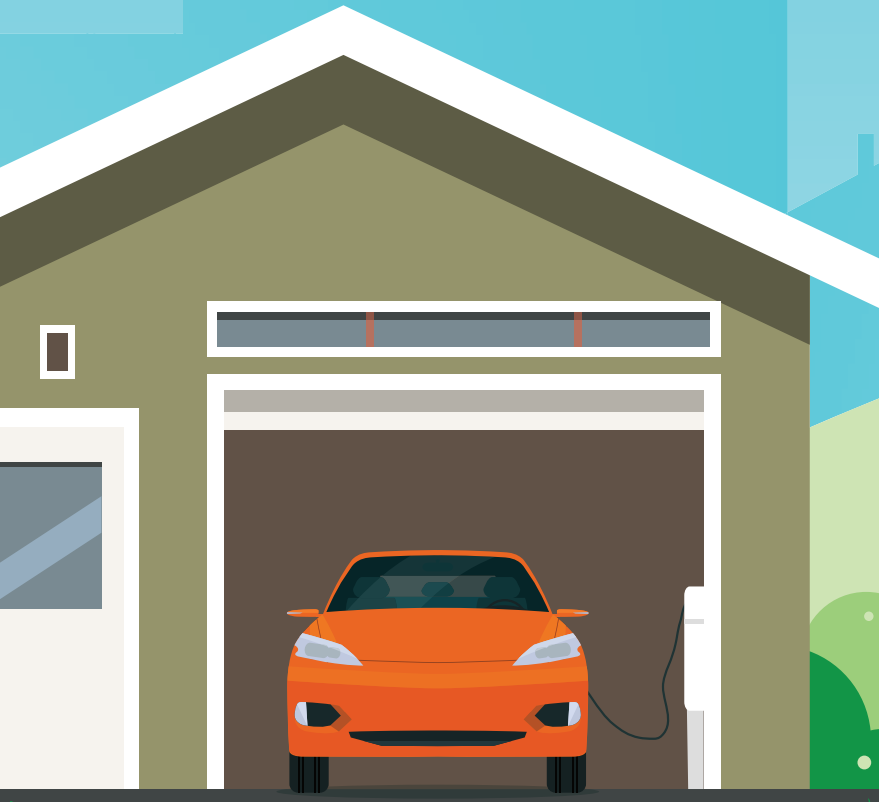
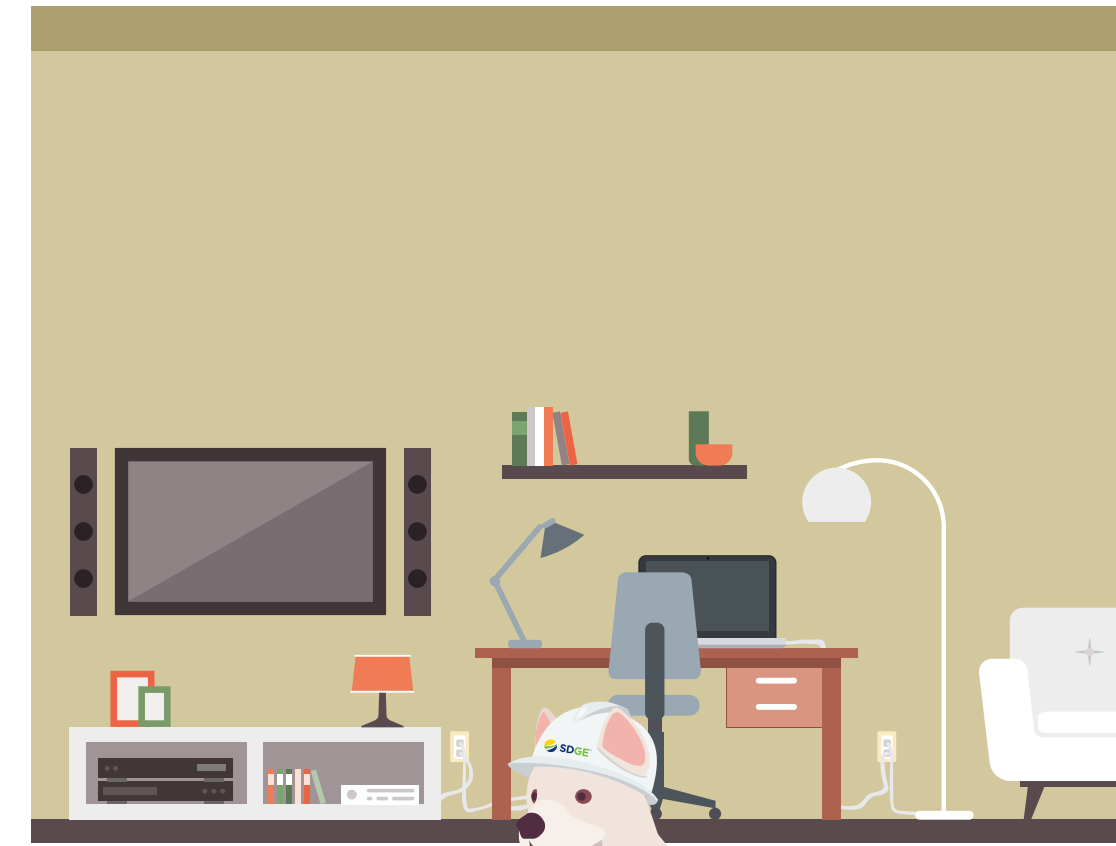
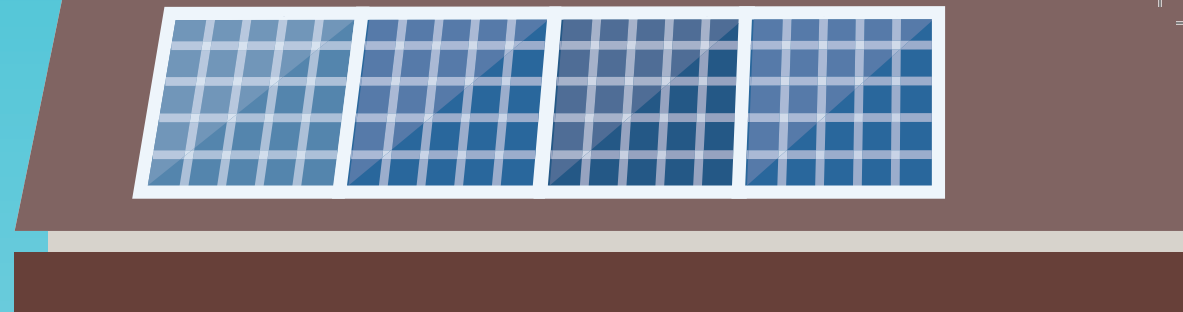
How to Stay Safe Around Natural Gas and Electricity



sdge.com/safety

Electricity Powers Our Lives

We use electricity every day. Things you plug in use electric power to run. It keeps lights on in our homes. It keeps food in the fridge cold. Even some cars plug in to charge. Electricity helps make our lives easier, but it can be dangerous. **Read more to learn how you can stay safe.**



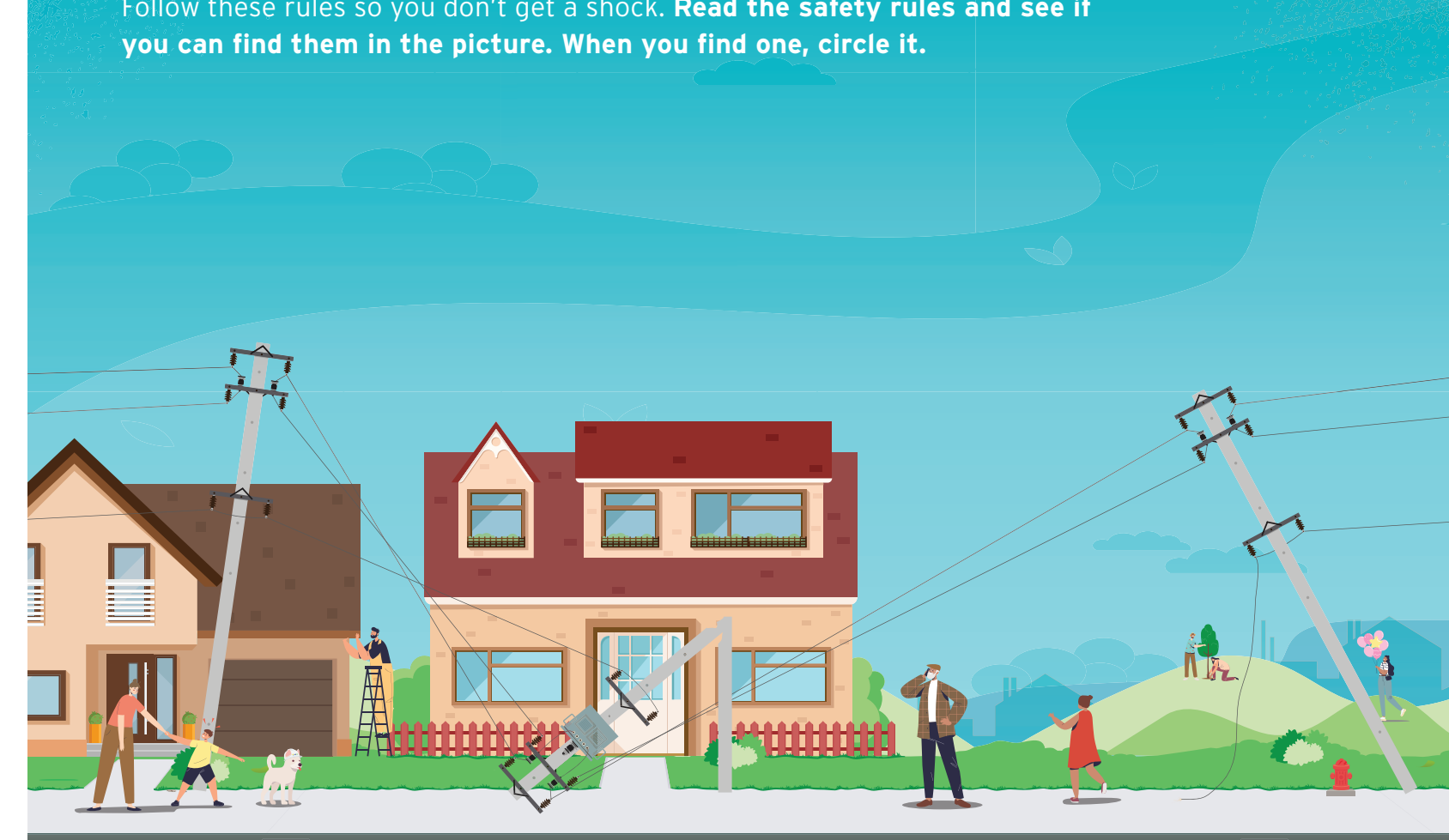
What Uses Electricity in Your Home?

Lots of things have a cord that plugs into the wall. Ask a teacher or parent to set a timer for one minute. Think of what things use electricity in your home. Write down as many as you can before the time is up. The picture will give you a few ideas. **You can also look around the room for other ideas.**

_____	_____	_____
_____	_____	_____
_____	_____	_____

Avoid Danger Outside

Power lines bring electricity to your home. Many power lines are above the ground. They can also be below the ground. It is not safe to touch power lines. Follow these rules so you don't get a shock. **Read the safety rules and see if you can find them in the picture. When you find one, circle it.**



Never touch a downed or broken power line.

Tell an adult if you see a power line on the ground.

Ask a grown-up to call 911 to report downed power lines right away.

Keep kites, balloons, tree houses and ladders away.

Don't plant trees under or close to power lines.

Avoid Danger Inside

Electricity flows through the cords in your home too. Read the rules for staying safe inside. Then look at each picture and decide if it's safe or not. **Write "Right" under the safe pictures. Write "Wrong" under the unsafe pictures.**

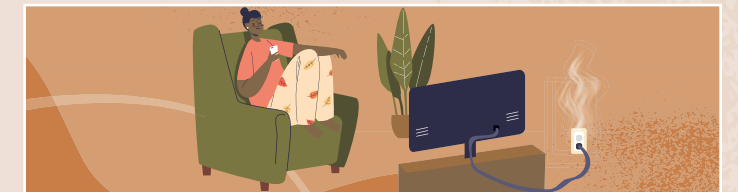
Look to make sure electrical cords aren't frayed.



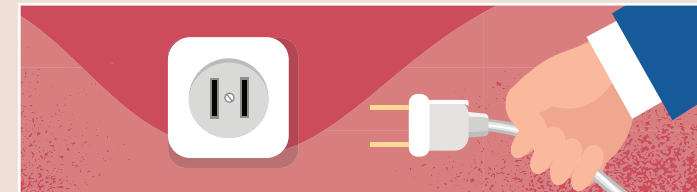


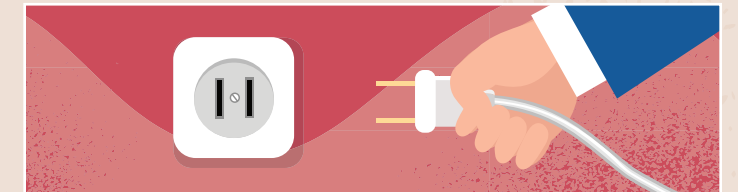
Do not use anything plugged in that is smoking or sparking.



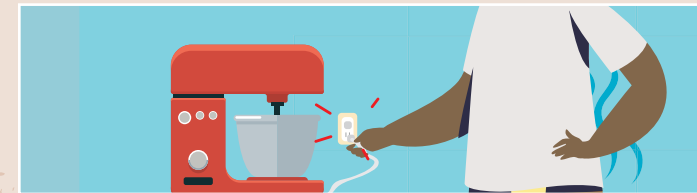


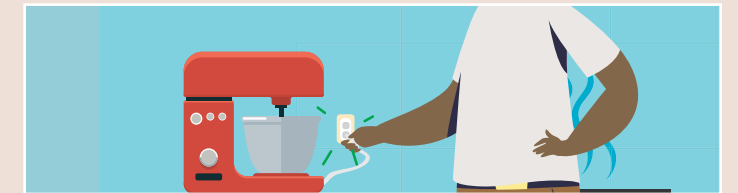
To unplug an appliance, grasp by the plug and pull.



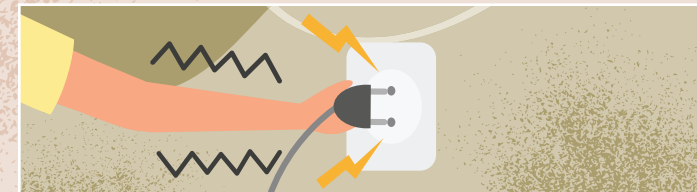


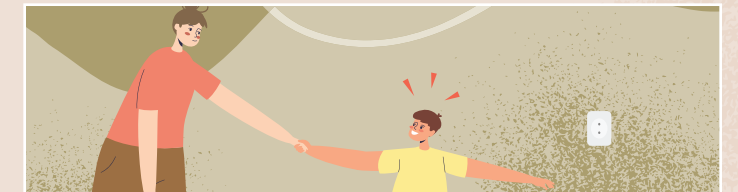
Don't force plugs if they don't fit snugly into outlets.





If you feel a tingle or light shock, stop and tell a grown-up.

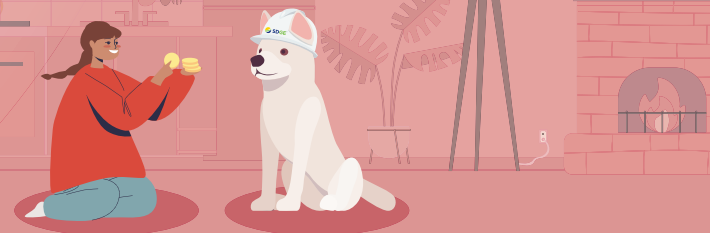
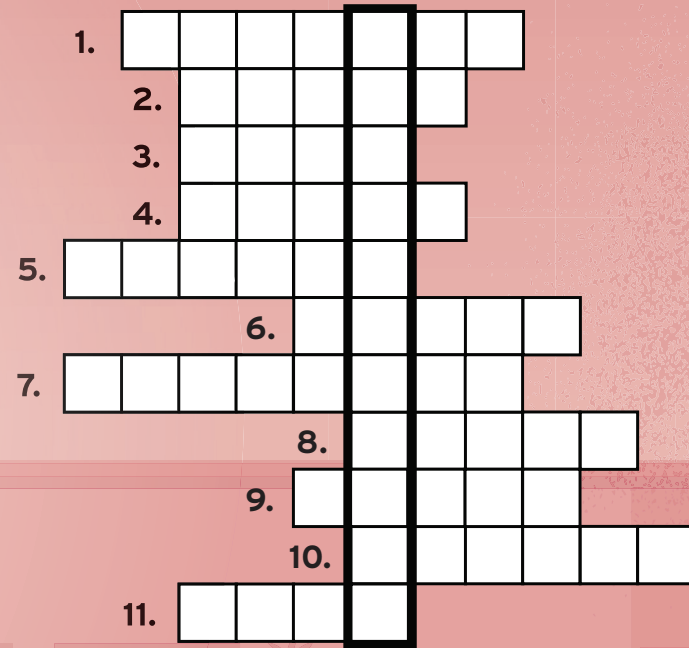




Electric Safety Puzzle

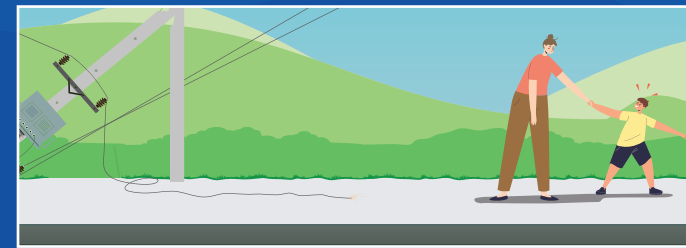
Use what you've learned about staying safe around electricity to solve the puzzle! The answers will spell out a word going down.

- Plugs should fit snugly into _____. Don't force them if they don't.
- Do you see a power line on the ground? Tell an _____ right away.
- You shouldn't fly a _____ or play with balloons near a power line.
- Don't _____ a downed or broken power line.
- _____ downed power lines by calling 911.
- Do you want to unplug an appliance safely? Just _____ the plug and pull.
- If something is plugged in and _____ or smoking, do not touch it.
- It isn't safe if electrical _____ are frayed.
- Trees should be planted away from power _____.
- Stop and tell a grown-up if you feel a _____ or shock.
- Follow these rules to _____ safe!



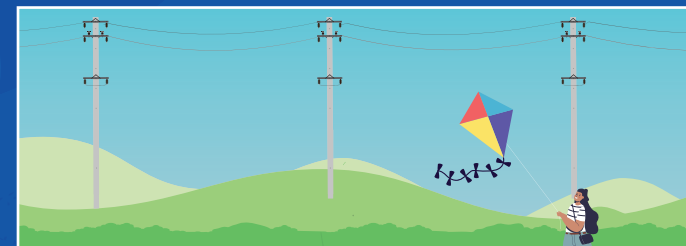
Drawing Challenge

Try drawing your own version of each picture. When your drawing is done, write the safety rule under it.



Power lines don't belong on the ground. If you see one, don't touch it.





Kites aren't safe around power lines. Stay far away when you're flying one.



x r t h e m q m w y m a k w p
s l q f y y s n q r i x o t q
q t i e v f f f z t e y l h r
b a a n f s t i b q n p u e k
a n d y e c p v z b r m o i a
a a c u i s g r o u n d p r c
w s r p l v f a q s b v o z t
a k x z a t l r x r b h w m c
y t a q n f q p o c m a e o e
l o z a w k i e a m h r r n

Power Line Safety Search

Find each word in the sentence and circle it.

Stay away from power lines on the ground and ask an adult to report them.



True or False?

Read each statement and decide if it's true or false. Circle the T for true and the F for false.

- It is safe to use things with frayed electrical cords. T F
- You can wait to call 911 if you see downed power lines. T F
- Trees should be planted away from power lines. T F
- Don't use electric items if you see smoke or sparks. T F
- You can get a shock if you touch electricity. T F

ANSWER KEY
1. False. Make sure electrical cords aren't frayed before you plug them in.
2. False. Ask an adult to call 911 right away if you see power lines on the ground.
3. True. Tall trees should not be planted under or near power lines.
4. True. If you see smoke or sparks, it could be dangerous.
5. True. You should never touch electricity. Stay away from downed power lines and dangerous cords or appliances.

All About Natural Gas

Did you know we use natural gas every day? It helps heat our homes and cook food. Natural gas travels through pipelines under the ground. These pipelines carry it to houses and buildings. A natural gas leak can be very dangerous. That's why SDG&E checks its pipelines often. It's also why you should know about natural gas safety.

Natural Gas Safety Scramble

Natural gas leaks can happen outside or indoors. Fortunately, recognizing the signs of a gas leak is as easy as using your senses. **Place the words into the correct order to create a sentence about the signs of a gas leak.**

1. has odor Natural a gas distinctive.

3 6 1 4 2 5

2. not do, leak a smell always You gas could may be it, you but it if natural.

3 10 17 14 5 4 1 16 12 2 13 6 9 7 11 8 15

3. leak hissing like gas may A sound natural.

4 8 7 3 5 1 6 2

4. hear also roaring whistling may or You.

4 3 5 7 2 6 1

5. noise things may a natural leak An be unusual from that use gas gas.

3 5 10 12 8 14 1 11 2 4 6 7 9 13

6. the a leak bubbling mean could Water on gas ground natural.

4 8 11 2 7 6 1 3 10 5 9

7. dirt air So blowing could the up into.

3 8 1 4 2 7 5 6

8. dead gas may or dying grass be weeds near a leak Plants, or natural.

12 8 10 3 14 2 11 4 5 6 9 1 13 7

You Should Know

Natural gas pipelines sometimes get leaks. You should stay away to stay safe. But first, you need to know the signs of a natural gas leak.

See it! Do you see dirt or water blowing into the air? Do you see dead or dying plants, grass or weeds? There could be a natural gas leak.

smells can also mask it, and the odor may fade. If you do smell it, the odor can help you find a natural gas leak.

Now that you know the signs, you're ready to spot a natural gas leak. Look at the home above and circle the possible signs.

Smell it! Natural gas has an unusual smell. You may not always smell this odor if you have a stuffy nose. Strong

Hear it! A natural gas leak can sound like a hiss, whistle or roar. Strange noises from things that use natural gas may be a leak.

SAFETY ALERT

What to Do if You Find a Leak

You may notice signs of a gas leak. If you do, here's what you should do to stay safe.

1. Tell someone. Talk to a teacher or grown-up in your family so they can help.
2. Go somewhere. Get as far away from the sight, sound or smell as you can. Before you leave, do not use electricity. Do not go near a fire if there is one. Fire around a natural gas leak can be very dangerous.
3. Call someone. Ask an adult to call 911.

Remember the Signs of a Natural Gas Leak

Fill in the blanks using the words in the word bank to help you remember how to spot a natural gas leak.

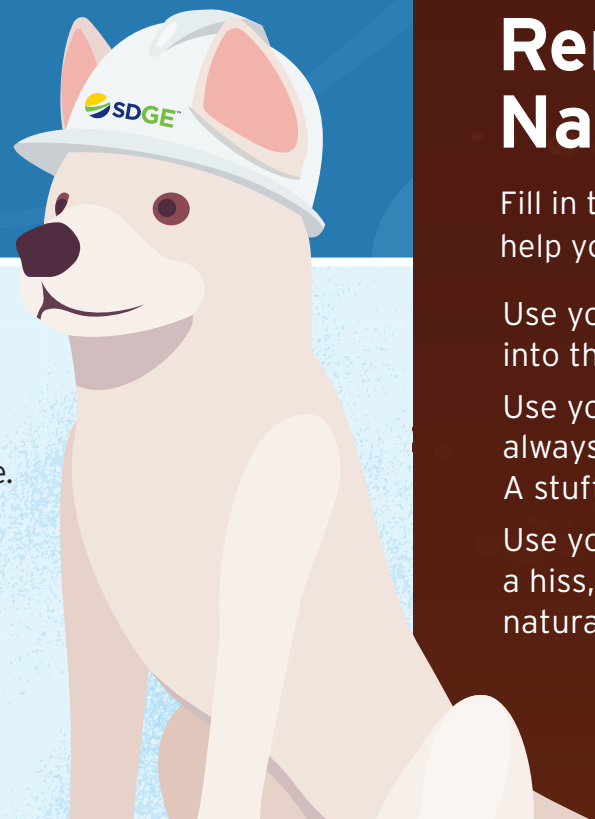
Use your . A natural gas leak can cause dirt or to blow into the air. Dead or dying plants, or weeds may also be a sign.

Use your nose. Natural has a distinctive smell, but you may not always smell it. Sometimes other smells cover it up, or the odor may fade. A stuffy can also make it hard to smell.

Use your ears. Natural gas leaks can be . They may sound like a hiss, whistle or . Strange coming from things that use natural gas - like a - could be a sign of a leak.

Word Bank

EYES
GAS
GRASS
LOUD
NOISES
NOSE
ROAR
STOVE
WATER



Stay Safe from a Natural Gas Leak

The story is about what you should do if you notice signs of a natural gas leak. Use the frames to illustrate the story.



At recess, you see bubbling water and hear a strange hissing noise.



It could be a natural gas leak, so you tell the teacher right away.



The teacher gathers all the students and gets them far away from the area.



Then the teacher calls 911 to report the possible natural gas leak.



Workers come assess the pipeline and fix any leaks to help keep you safe.



Steps to Safety

You must remember what to do if you smell an unusual natural gas odor, see bubbling water or hear a strange sound. Avoid danger by following these steps.

Read about each step and then solve the maze.

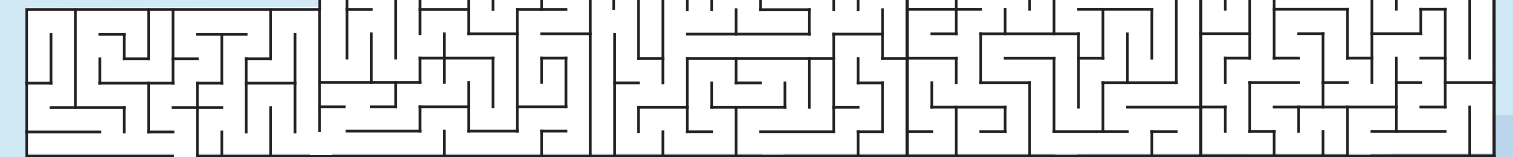
Get as far away as possible as quickly as possible. **FINISH**

If you see a fire, don't go near it. When fire comes into contact with natural gas, it is very dangerous.

Electricity and natural gas leaks don't mix. Don't use any electric items in the area.

Ask them to call 911 immediately. You must report the possible natural gas leak so someone can fix it.

Tell a parent, a teacher or another adult about what you smelled, saw or heard.



START

To Call or Not to Call?

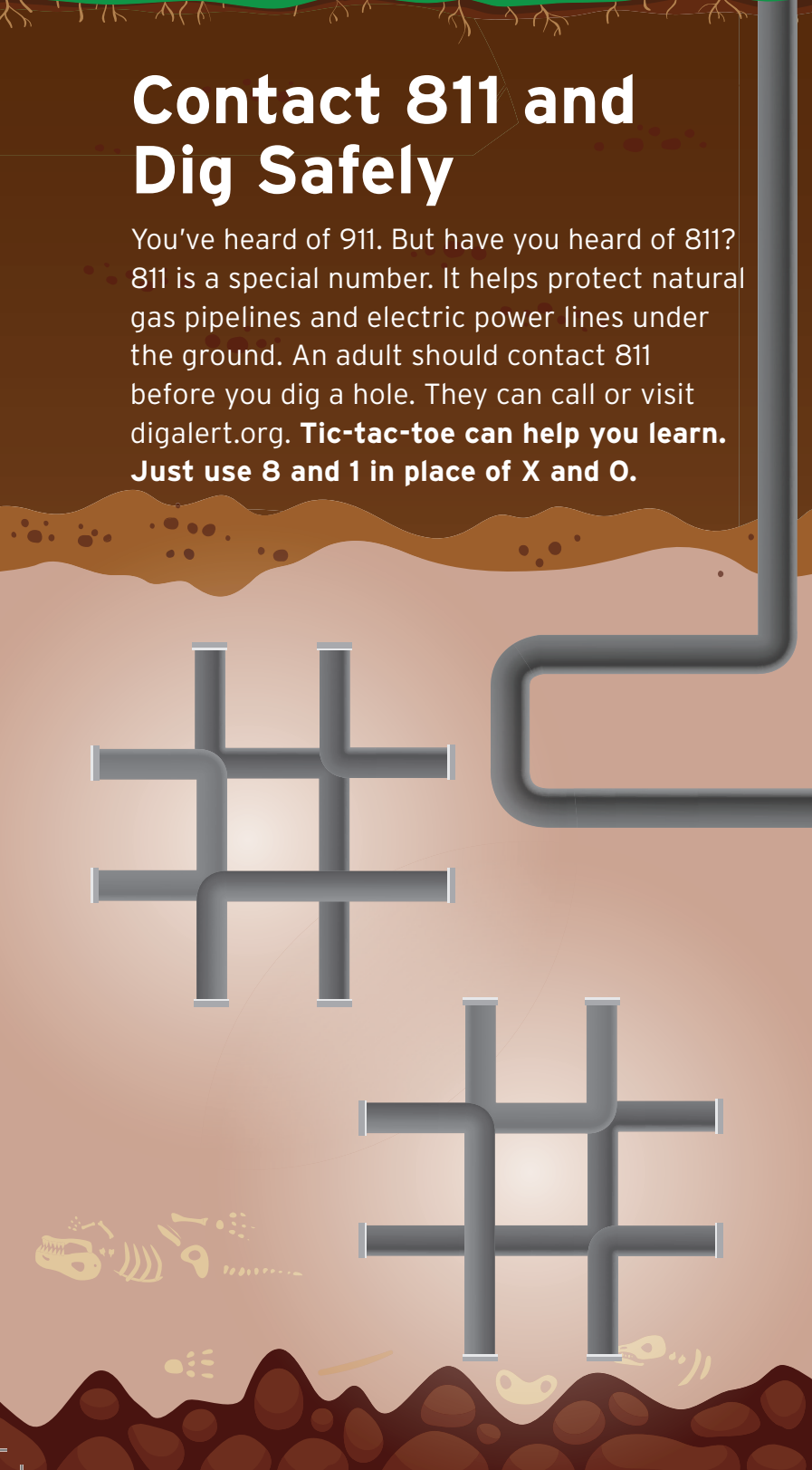
Look at each picture and decide whether there may be signs of a natural gas leak that need to be reported. If there are, circle "Yes." If not, circle "No." Even if you're not sure, you should always ask an adult to report a possible natural gas leak to help you stay safe.





Contact 811 and Dig Safely

You've heard of 911. But have you heard of 811? 811 is a special number. It helps protect natural gas pipelines and electric power lines under the ground. An adult should contact 811 before you dig a hole. They can call or visit digalert.org. **Tic-tac-toe can help you learn. Just use 8 and 1 in place of X and O.**



When Should You Contact 811?

Fill in the blanks using the word bank to find out! An adult should contact 811 before your family...

- Plants a _____ or _____.
- Builds a _____ around your yard.
- Puts in a new _____.
- Starts to _____ a _____ for any reason.

Word Bank

FENCE	TREE	HOLE
DIG	MAILBOX	FLOWERS



Have Fun with 811

WHAT HAPPENS WHEN YOU CONTACT 811?

FIRST, MARK OUT WHERE YOU PLAN TO DIG.

USE WHITE PAINT OR CHALK.

CALL OR GO ONLINE AT LEAST TWO BUSINESS DAYS BEFORE YOU START. WORKERS WILL COME PLACE FLAGS.

IF YOU SEE A FLAG, BE CAREFUL!!

THE FLAGS SHOW WHERE THERE ARE PIPELINES OR WIRES UNDER THE GROUND.

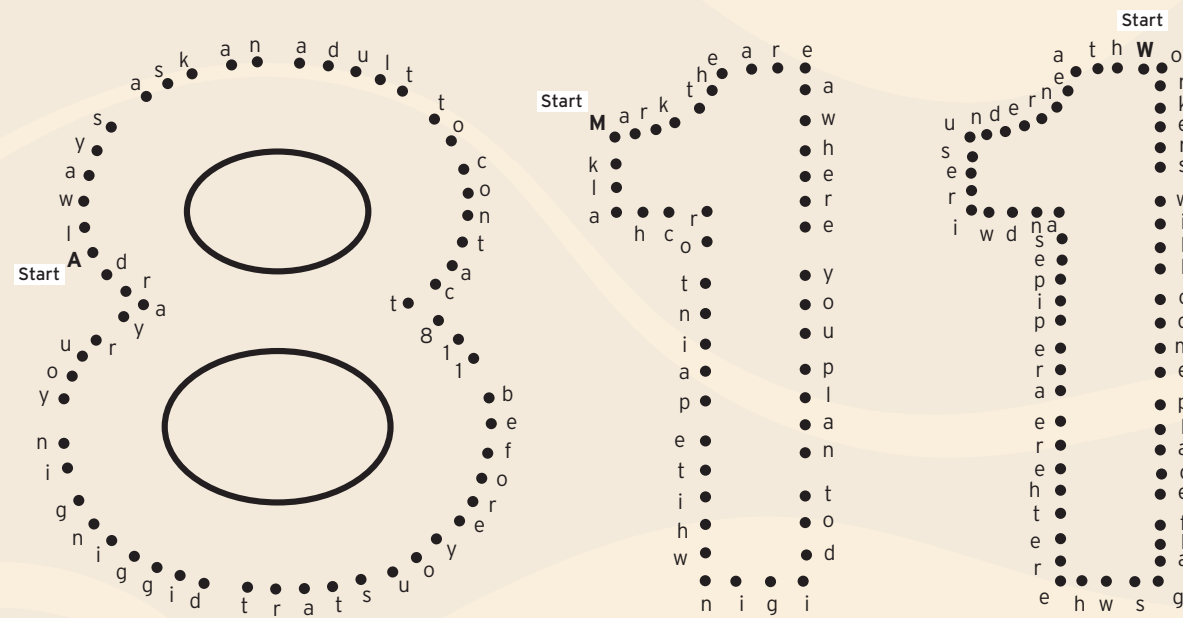
STAY SAFE!

ONLY USE HAND TOOLS WITHIN 24 INCHES OF EACH SIDE OF A FLAG. HITTING A PIPELINE OR POWER LINE CAN BE DANGEROUS.

811 Makes Safety Fun















Connect the dots to help you remember 811! Instead of connecting numbers, connect the letters in these sentences:

- 8: Always ask an adult to contact 811 before you start digging in your yard.
- 1: Mark the area where you plan to dig in white paint or chalk.
- 1: Workers will come place flags where there are pipes and wires underneath.



Color the Flags

Workers have come and placed the flags. Now you're ready to dig! But what do the flags mean? Each type of underground line has its own color. **Unscramble the letters to learn what each color means. Then color the flags. And remember! Leave the flags in place until you're done digging!**

		
 Electric lines DRE	 Natural gas, oil or steam EWYLL	 Communications RANOGE
		
 Water LBEU	 Reclaimed water RPLEPU	 Sewer EENGR
	 Temporary markings IKNP	






























Find the Differences

The family in the pictures contacted 811 so they could plant a garden. These pictures don't match. **Find the 10 differences and circle them.**



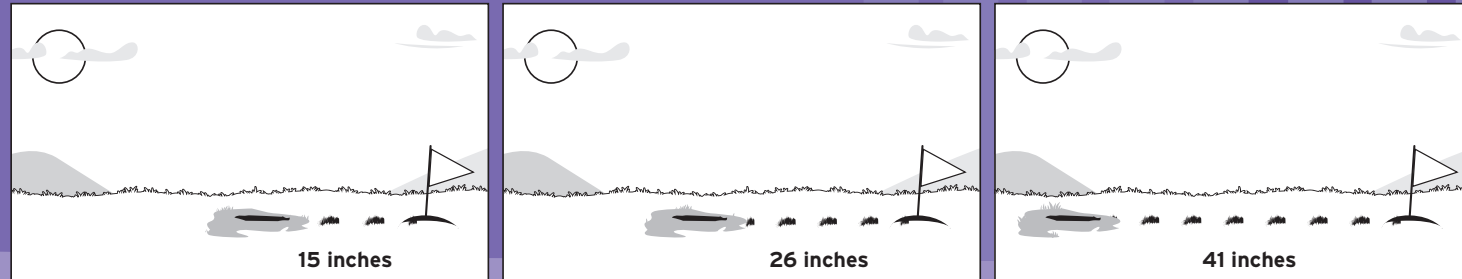
811 Pop Quiz

Help find what's under the ground. Look at the flag color at the top. **Circle the picture below it that matches the color. The activity above can help you find the right picture.**

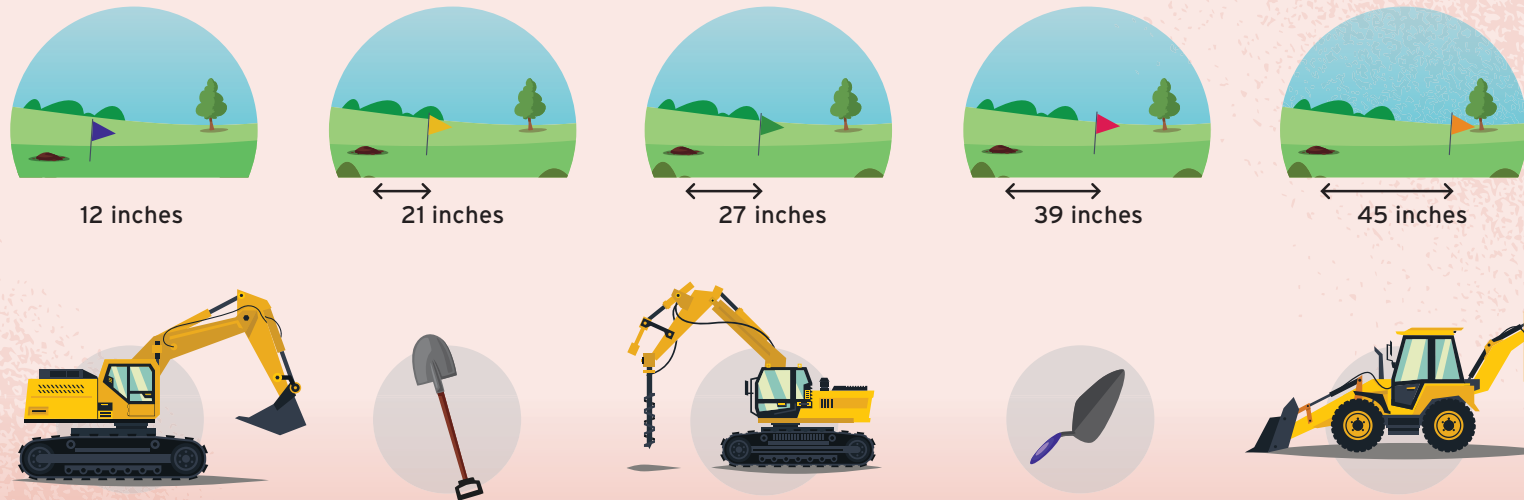
Dig Smart, Dig Safe

What should you do if there's a flag close to your digging area? To stay safe, always use a hand tool instead of a large digging machine within 24 inches of a flag. Digging carefully will help you avoid a natural gas pipeline or power line. Look at the flags and digging areas in each picture. **Determine the safest choice and draw a machine or hand tool.**



Machine or Hand Tool?

Hand tools are best within 24 inches of a flag. Larger machines can be used safely farther away. Decide which tool is right for each picture. **Then draw a line to match them.**



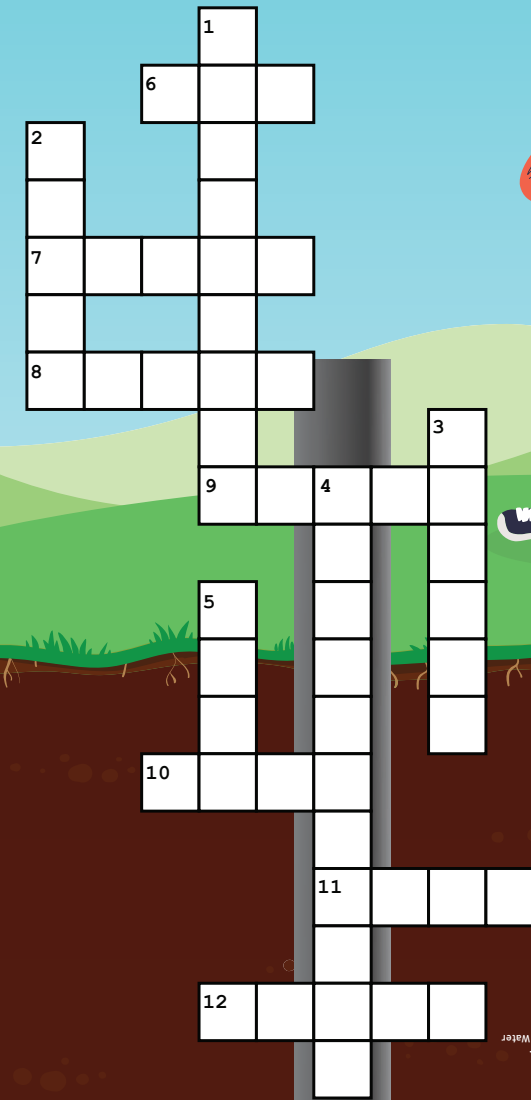
Find the Pictures

There are three large machines and five hand tools hidden in these pages. See if you can find them all!



Safety Review

What have you learned about natural gas and 811 safety for natural gas and electric lines? Fill in the answers to find out!



DOWN

- _____ carry natural gas under the ground.
- After contacting 811, keep all _____ in place until you are finished digging.
- Dead or dying _____, grass or weeds may be a sign of a gas leak.
- Do not use anything that runs on _____ when there is a gas leak.
- Use a _____ tool to dig within 24 inches of a flag.

ACROSS

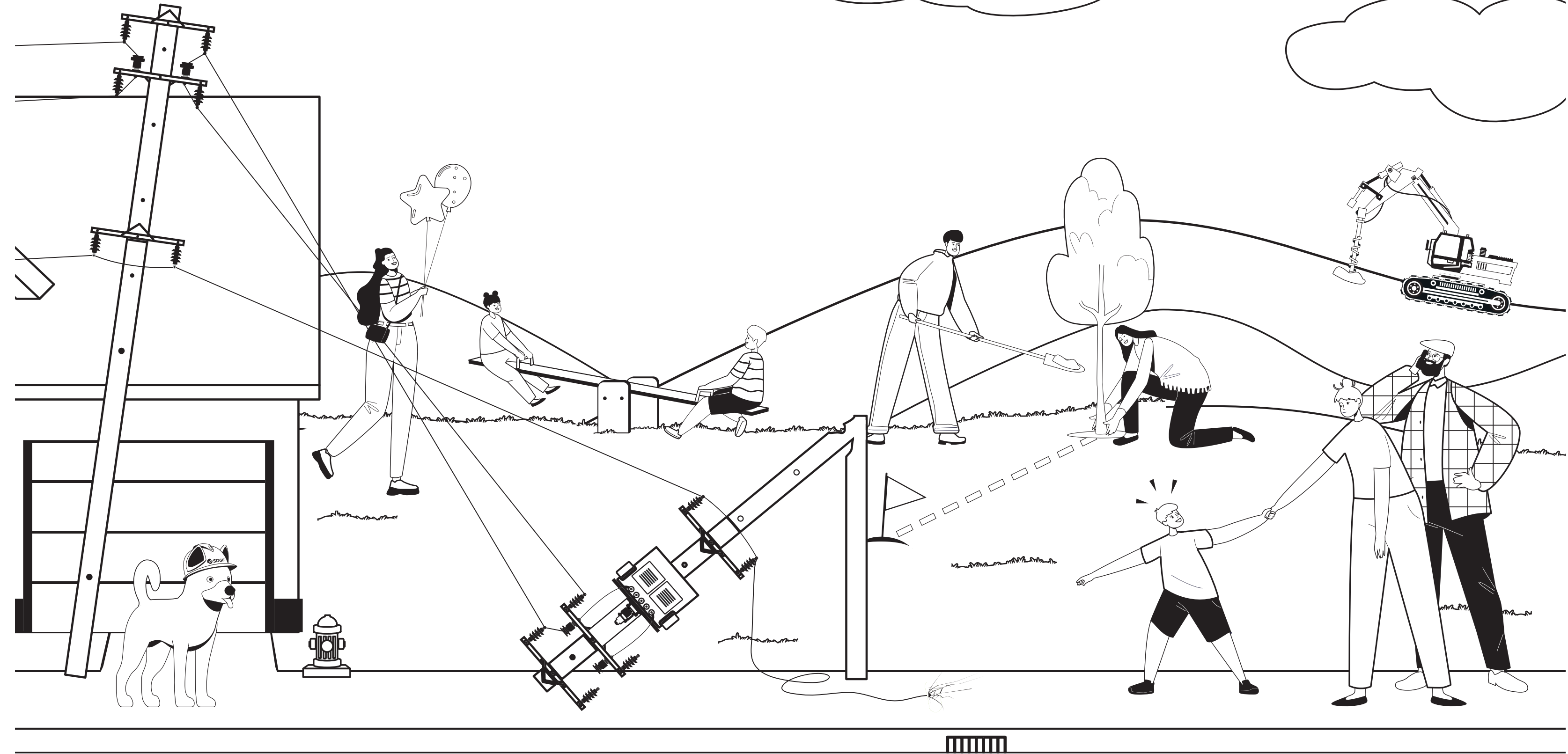
- Contact 811 at least two business days before you plan to _____.
- If you see, smell, or hear a gas leak, you should tell an _____.
- A gas leak can make a whistling or roaring _____.
- You may not always be able to _____ a natural gas leak.
- Natural gas may have an unusual _____.
- We _____ our food with natural gas.
- There may be a gas leak if you see bubbling _____ on the ground or dirt blowing into the air.

What's Your Story?

Write a safety story in the spaces. It can be about gas, electricity or 811.

Color and Count

The people in this picture are being safe.
Color the drawing. Then count how many things they're doing safely.





P.O. Box 129831 | San Diego, CA 92112-9831 | 1-800-411-7343 | Connect at [sdge.com](https://www.sdge.com)

© 2026 San Diego Gas & Electric Company. Trademarks are the property of their respective owners. All rights reserved.

S2650017 0426